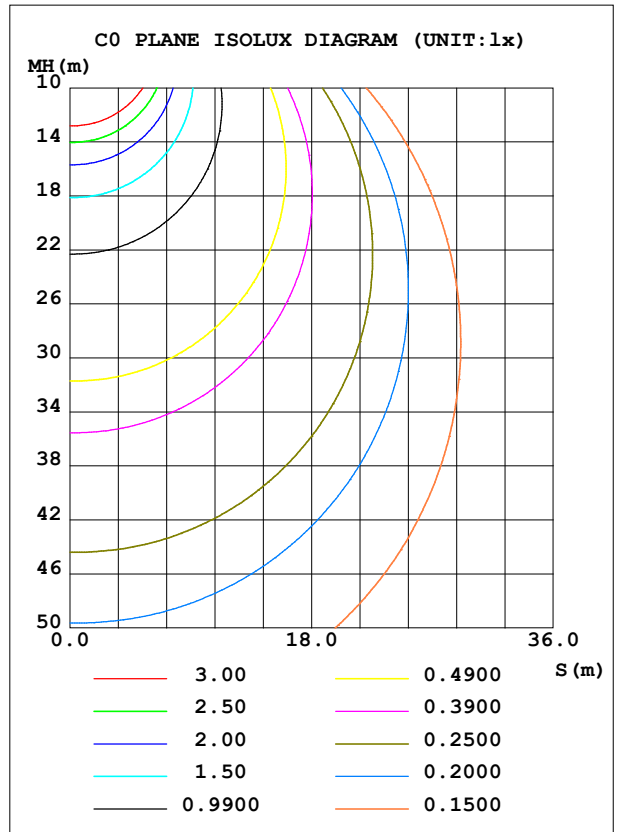
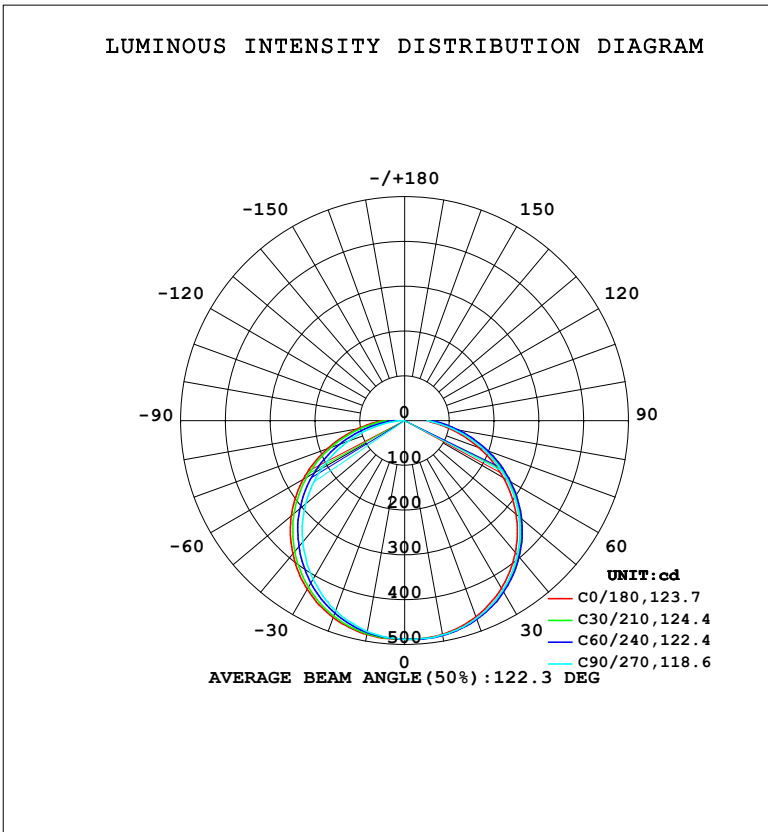


**LUMINAIRE PHOTOMETRIC TEST REPORT**

Test:U:230.39V I:0.0851A P:19.225W PF:0.9804 Freq:50.00Hz Lamp Flux:1615.12x1 lm		
NAME:	TYPE:	WEIGHT:
SPEC.: 4000K	DIM.:	SERIAL No.:
MFR.: EVERFINE	SUR.:	Shielding Angle:

DATA OF LAMP		PHOTOMETRIC DATA				Eff: 84.01 lm/W
MODEL	W01	I <sub>max</sub> (cd)	489.7	S/MH (C0/180)	1.32	
NOMINAL POWER (W)	20	LOR (%)	100.0	S/MH (C90/270)	1.25	
RATED VOLTAGE (V)	230	TOTAL FLUX (lm)	1615.1	η UP, DN (C0-180)	0.0, 52.7	
NOMINAL FLUX (lm)	1615.12	CIE CLASS	DIRECT	η UP, DN (C180-360)	0.0, 47.3	
LAMPS INSIDE	1	η up (%)	0.0	CIBSE SHR NOM	1.50	
TEST VOLTAGE (V)	230	η down (%)	100.0	CIBSE SHR MAX	1.50	



C Range: 0 - 360DEG  
 C Interval: 15.0DEG  
 Test Speed: HIGH  
 Temperature: 25.3°C  
 Operators: DAMIN  
 Test Date: 2024-11-19

γ Range: 0 - 90DEG  
 γ Interval: 1.0DEG  
 Test System: EVERFINE GO-2000B\_V1 SYSTEM V2.00.473  
 Humidity: 65.0%  
 Test Distance: 9.401m [K=1.0000]  
 Remarks:

ZONAL FLUX DIAGRAM

ZONAL FLUX DIAGRAM:

$\gamma$	C0	C45	C90	C135	C180	C225	C270	C315	$\gamma$	$\Phi$ zone	$\Phi$ total	%lum,lamp
10	484.4	487.2	485.8	487.6	485.1	482.1	478.0	481.3	0- 10	46.44	46.44	2.88,2.88
20	465.8	472.2	469.4	473.1	467.6	460.8	451.2	459.6	10- 20	134.7	181.1	11.2,11.2
30	432.4	442.5	438.1	444.2	435.0	424.5	408.9	422.8	20- 30	207.6	388.7	24.1,24.1
40	384.5	398.4	391.6	401.0	388.5	374.6	353.9	371.0	30- 40	256.1	644.8	39.9,39.9
50	324.7	342.4	333.0	345.4	330.8	313.0	288.7	310.0	40- 50	274.3	919.1	56.9,56.9
60	254.4	275.6	264.2	279.3	261.4	242.2	213.4	238.6	50- 60	259.9	1179	73,73
70	176.2	200.3	187.0	204.6	183.7	163.8	132.9	160.3	60- 70	214.3	1393	86.3,86.3
80	100.7	123.9	110.0	127.8	106.6	88.02	54.62	84.54	70- 80	146.3	1540	95.3,95.3
90	51.07	65.52	50.33	63.38	49.71	32.42	2.051	34.09	80- 90	75.45	1615	100,100
100									90-100			
110									100-110			
120									110-120			
130									120-130			
140									130-140			
150									140-150			
160									150-160			
170									160-170			
180									170-180			
DEG	LUMINOUS INTENSITY:cd									UNIT:lm		

Conical surface Flux(90deg): 781.72 lm

%lum = 48.4%

%lamp = 48.4%

Conical surface Flux(130deg): 1293.6 lm

%lum = 80.1%

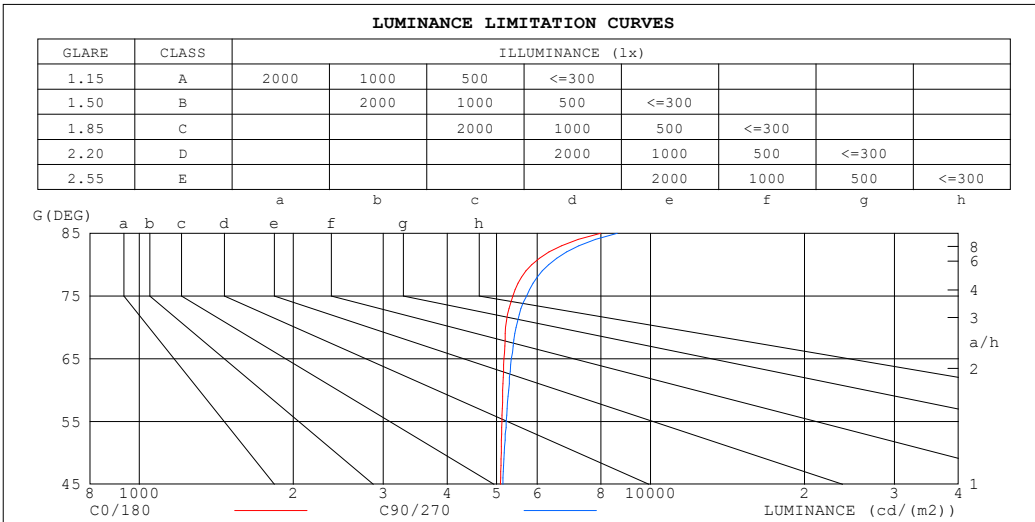
%lamp = 80.1%

C Range: 0 - 360DEG  
 C Interval: 15.0DEG  
 Test Speed: HIGH  
 Temperature:25.3°C  
 Operators:DAMIN  
 Test Date:2024-11-19

$\gamma$  Range: 0 - 90DEG  
 $\gamma$  Interval: 1.0DEG  
 Test System:EVERFINE GO-2000B\_V1 SYSTEM V2.00.473  
 Humidity:65.0%  
 Test Distance:9.401m [K=1.0000]  
 Remarks:

**LUMINANCE LIMITATION CURVES**

Test:U:230.39V I:0.0851A P:19.225W PF:0.9804 Freq:50.00Hz Lamp Flux:1615.12x1 lm		
NAME:	TYPE:	WEIGHT:
SPEC.: 4000K	DIM.:	SERIAL No.:
MFR.: EVERFINE	SUR.:	Shielding Angle:



LUMINANCE cd/(m2)		
G (DEG)	C0/180	C90/270
85	7980	8603
80	5858	6323
75	5381	5726
70	5205	5459
65	5168	5340
60	5138	5276
55	5119	5216
50	5103	5171
45	5084	5146

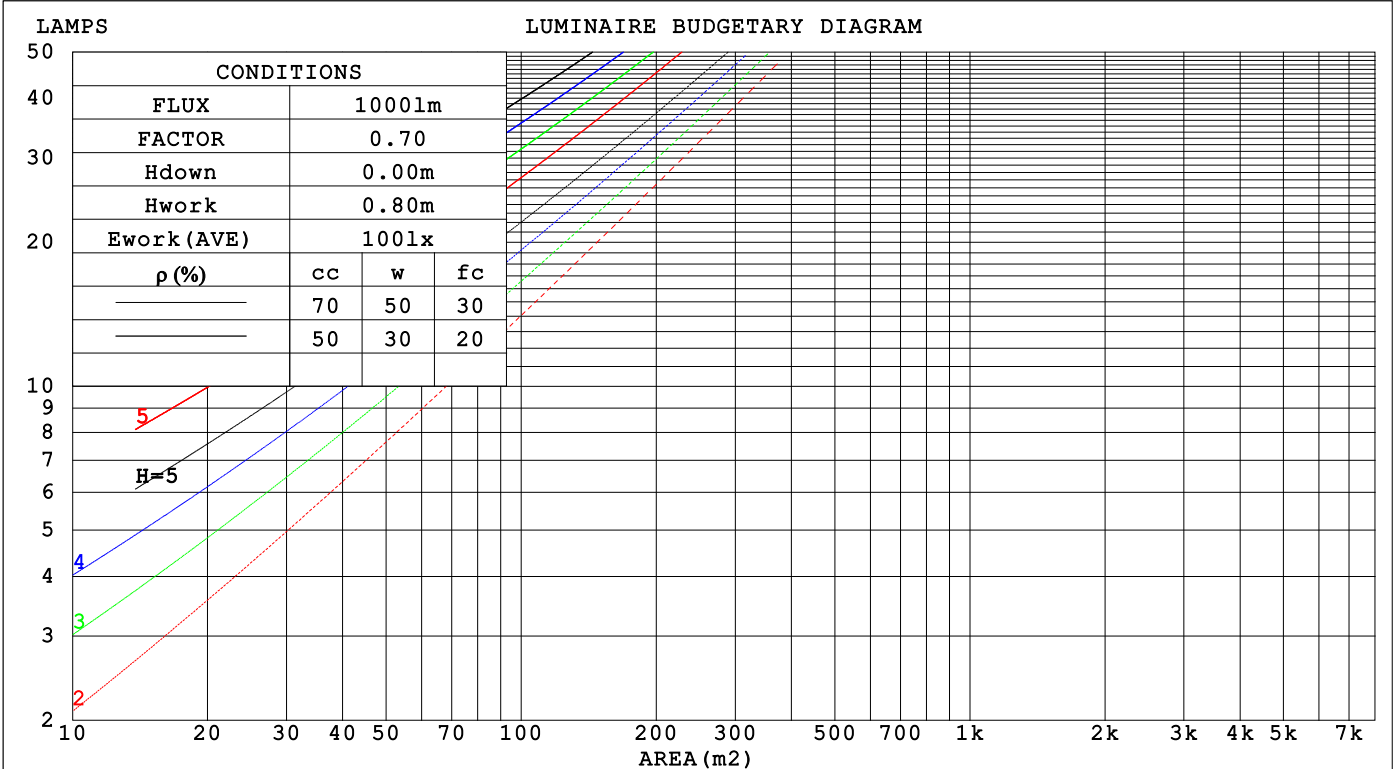
C Range: 0 - 360DEG  
 C Interval: 15.0DEG  
 Test Speed: HIGH  
 Temperature:25.3°C  
 Operators:DAMIN  
 Test Date:2024-11-19

γ Range: 0 - 90DEG  
 γ Interval: 1.0DEG  
 Test System:EVERFINE GO-2000B\_V1 SYSTEM V2.00.473  
 Humidity:65.0%  
 Test Distance:9.401m [K=1.0000]  
 Remarks:

**CU AND LUMINAIRE BUDGETARY ESTIMATE DIAGRAM**

Test:U:230.39V I:0.0851A P:19.225W PF:0.9804 Freq:50.00Hz Lamp Flux:1615.12x1 lm		
NAME:	TYPE:	WEIGHT:
SPEC.: 4000K	DIM.:	SERIAL No.:
MFR.: EVERFINE	SUR.:	Shielding Angle:

$\rho_{cc}$	80%			70%			50%			30%			10%			0
$\rho_w$	50%	30%	10%	50%	30%	10%	50%	30%	10%	50%	30%	10%	50%	30%	10%	0
$\rho_{fc}$	20%			20%			20%			20%			20%			0
RCR	RCR:Room Cavity Ratio						Coefficients of Utilization(CU)									
0.0	1.19	1.19	1.19	1.16	1.16	1.16	1.11	1.11	1.11	1.06	1.06	1.06	1.02	1.02	1.02	1.00
1.0	1.02	.97	.92	.99	.95	.91	.95	.91	.88	.91	.88	.85	.87	.85	.83	.80
2.0	.88	.80	.74	.86	.79	.73	.82	.76	.71	.79	.74	.69	.76	.72	.68	.66
3.0	.76	.68	.61	.75	.67	.60	.72	.65	.59	.69	.63	.58	.66	.61	.57	.54
4.0	.67	.58	.51	.66	.57	.50	.63	.56	.50	.61	.54	.49	.59	.53	.48	.46
5.0	.60	.50	.43	.59	.50	.43	.57	.49	.43	.55	.48	.42	.53	.47	.42	.39
6.0	.54	.44	.38	.53	.44	.37	.51	.43	.37	.49	.42	.37	.48	.41	.36	.34
7.0	.49	.39	.33	.48	.39	.33	.46	.38	.33	.45	.38	.32	.43	.37	.32	.30
8.0	.44	.35	.29	.44	.35	.29	.42	.35	.29	.41	.34	.29	.40	.33	.29	.27
9.0	.41	.32	.26	.40	.32	.26	.39	.31	.26	.38	.31	.26	.37	.30	.26	.24
10.0	.37	.29	.24	.37	.29	.24	.36	.29	.24	.35	.28	.24	.34	.28	.23	.22



C Range: 0 - 360DEG  
 C Interval: 15.0DEG  
 Test Speed: HIGH  
 Temperature:25.3°C  
 Operators:DAMIN  
 Test Date:2024-11-19

$\gamma$  Range: 0 - 90DEG  
 $\gamma$  Interval: 1.0DEG  
 Test System:EVERFINE GO-2000B\_V1 SYSTEM V2.00.473  
 Humidity:65.0%  
 Test Distance:9.401m [K=1.0000]  
 Remarks:

**WEC AND CCEC**

Test:U:230.39V I:0.0851A P:19.225W PF:0.9804 Freq:50.00Hz								
Lamp Flux:1615.12x1 lm								
NAME:			TYPE:			WEIGHT:		
SPEC.: 4000K			DIM.:			SERIAL No.:		
MFR.: EVERFINE			SUR.:			Shielding Angle:		

$\rho_{CC}$	80%			70%			50%			30%			10%			0
$\rho_w$	50%	30%	10%	50%	30%	10%	50%	30%	10%	50%	30%	10%	50%	30%	10%	0
$\rho_{fc}$	20%			20%			20%			20%			20%			0
RCR	RCR:Room Cavity Ratio						Wall Exitance Coefficients (WEC)									
0.0																
1.0	.353	.201	.064	.346	.197	.063	.332	.191	.061	.320	.184	.059	.308	.179	.058	
2.0	.319	.175	.054	.313	.172	.053	.301	.167	.052	.290	.162	.051	.279	.158	.050	
3.0	.289	.154	.046	.284	.152	.046	.273	.148	.045	.263	.144	.044	.254	.141	.044	
4.0	.263	.137	.040	.259	.135	.040	.249	.132	.039	.240	.129	.039	.232	.126	.038	
5.0	.241	.123	.036	.237	.122	.035	.229	.119	.035	.221	.117	.035	.214	.114	.034	
6.0	.222	.111	.032	.218	.110	.032	.211	.108	.031	.204	.106	.031	.198	.104	.031	
7.0	.206	.102	.029	.202	.101	.029	.196	.099	.029	.190	.097	.028	.184	.096	.028	
8.0	.192	.094	.026	.188	.093	.026	.183	.091	.026	.177	.090	.026	.172	.088	.026	
9.0	.179	.087	.024	.176	.086	.024	.171	.084	.024	.166	.083	.024	.161	.082	.024	
10.0	.168	.080	.022	.165	.080	.022	.161	.079	.022	.156	.077	.022	.152	.076	.022	

$\rho_{CC}$	80%			70%			50%			30%			10%			0
$\rho_w$	50%	30%	10%	50%	30%	10%	50%	30%	10%	50%	30%	10%	50%	30%	10%	0
$\rho_{fc}$	20%			20%			20%			20%			20%			0
RCR	RCR:Room Cavity Ratio						Ceiling Cavity Exitance Coefficients (CCEC)									
0.0	.190	.190	.190	.163	.163	.163	.111	.111	.111	.064	.064	.064	.020	.020	.020	
1.0	.183	.156	.131	.157	.134	.113	.107	.092	.078	.062	.053	.045	.020	.017	.015	
2.0	.176	.132	.095	.151	.113	.082	.103	.078	.057	.060	.046	.033	.019	.015	.011	
3.0	.168	.114	.072	.144	.099	.062	.099	.069	.044	.057	.040	.026	.018	.013	.008	
4.0	.160	.101	.056	.138	.088	.049	.095	.061	.034	.055	.036	.020	.018	.012	.007	
5.0	.153	.091	.046	.131	.079	.040	.090	.055	.028	.052	.032	.017	.017	.011	.005	
6.0	.145	.083	.038	.125	.072	.033	.086	.050	.023	.050	.029	.014	.016	.010	.005	
7.0	.138	.076	.032	.119	.066	.028	.082	.046	.020	.048	.027	.012	.015	.009	.004	
8.0	.131	.070	.028	.113	.061	.024	.078	.043	.017	.046	.025	.010	.015	.008	.003	
9.0	.125	.065	.025	.108	.057	.021	.075	.040	.015	.043	.023	.009	.014	.008	.003	
10.0	.119	.061	.022	.103	.053	.019	.071	.037	.014	.042	.022	.008	.013	.007	.003	

C Range: 0 - 360DEG  
 C Interval: 15.0DEG  
 Test Speed: HIGH  
 Temperature:25.3°C  
 Operators:DAMIN  
 Test Date:2024-11-19

$\gamma$  Range: 0 - 90DEG  
 $\gamma$  Interval: 1.0DEG  
 Test System:EVERFINE GO-2000B\_V1 SYSTEM V2.00.473  
 Humidity:65.0%  
 Test Distance:9.401m [K=1.0000]  
 Remarks:

**UGR(Unified Glare Rating) Table**

Test:U:230.39V I:0.0851A P:19.225W PF:0.9804 Freq:50.00Hz										
Lamp Flux:1615.12x1 lm										
NAME:			TYPE:			WEIGHT:				
SPEC.: 4000K			DIM.:			SERIAL No.:				
MFR.: EVERFINE			SUR.:			Shielding Angle:				
ceiling/cavity	0.7	0.7	0.5	0.5	0.3	0.7	0.7	0.5	0.5	0.3
walls	0.5	0.3	0.5	0.3	0.3	0.5	0.3	0.5	0.3	0.3
working plane	0.2	0.2	0.2	0.2	0.2	0.2	0.2	0.2	0.2	0.2
Room dimensions	Viewed crosswise					Viewed endwise				
x = 2H y = 2H	17.1	18.7	17.4	18.9	19.2	17.2	18.8	17.5	19.0	19.3
3H	19.0	20.5	19.3	20.7	21.0	19.2	20.6	19.5	20.9	21.1
4H	19.9	21.3	20.2	21.5	21.8	20.0	21.5	20.4	21.7	22.0
6H	20.6	22.0	21.0	22.2	22.5	20.9	22.2	21.2	22.5	22.8
8H	21.0	22.3	21.3	22.6	22.9	21.3	22.6	21.6	22.8	23.1
12H	21.4	22.6	21.7	22.9	23.2	21.7	22.9	22.0	23.2	23.5
4H 2H	17.9	19.3	18.3	19.6	19.9	18.0	19.4	18.3	19.7	19.9
3H	20.0	21.3	20.4	21.6	21.9	20.1	21.4	20.5	21.7	22.0
4H	21.0	22.2	21.4	22.5	22.8	21.2	22.3	21.6	22.7	23.0
6H	22.0	23.0	22.4	23.4	23.8	22.2	23.2	22.6	23.6	24.0
8H	22.5	23.4	22.9	23.8	24.2	22.7	23.7	23.1	24.0	24.4
12H	22.9	23.8	23.4	24.2	24.6	23.2	24.1	23.6	24.5	24.9
8H 4H	21.5	22.5	21.9	22.9	23.3	21.7	22.6	22.1	23.0	23.4
6H	22.8	23.6	23.2	24.0	24.4	22.9	23.7	23.4	24.2	24.6
8H	23.4	24.1	23.8	24.5	25.0	23.6	24.3	24.0	24.7	25.2
12H	24.0	24.7	24.5	25.1	25.6	24.3	24.9	24.8	25.4	25.8
12H 4H	21.6	22.5	22.0	22.9	23.3	21.7	22.6	22.2	23.0	23.4
6H	22.9	23.7	23.4	24.1	24.6	23.1	23.8	23.6	24.3	24.7
8H	23.7	24.3	24.2	24.8	25.2	23.9	24.5	24.3	24.9	25.4
Variations with the observer position at spacings(CIE Pub.117):										
S = 1.0H	+ 0.1 / - 0.2					+ 0.1 / - 0.1				
1.5H	+ 0.2 / - 0.3					+ 0.2 / - 0.3				
2.0H	+ 0.2 / - 0.4					+ 0.2 / - 0.4				

CIE Pub.117, 1615 lm Total Lamp Luminous Flux Correct (8log(F/F0) = 1.7)  
 Area: 0.1 m2

C Range: 0 - 360DEG  
 C Interval: 15.0DEG  
 Test Speed: HIGH  
 Temperature:25.3°C  
 Operators:DAMIN  
 Test Date:2024-11-19

γ Range: 0 - 90DEG  
 γ Interval: 1.0DEG  
 Test System:EVERFINE GO-2000B\_V1 SYSTEM V2.00.473  
 Humidity:65.0%  
 Test Distance:9.401m [K=1.0000]  
 Remarks:

**UTILIZATION FACTORS TABLE**

Test:U:230.39V I:0.0851A P:19.225W PF:0.9804 Freq:50.00Hz Lamp Flux:1615.12x1 lm		
NAME:	TYPE:	WEIGHT:
SPEC.: 4000K	DIM.:	SERIAL No.:
MFR.: EVERFINE	SUR.:	Shielding Angle:

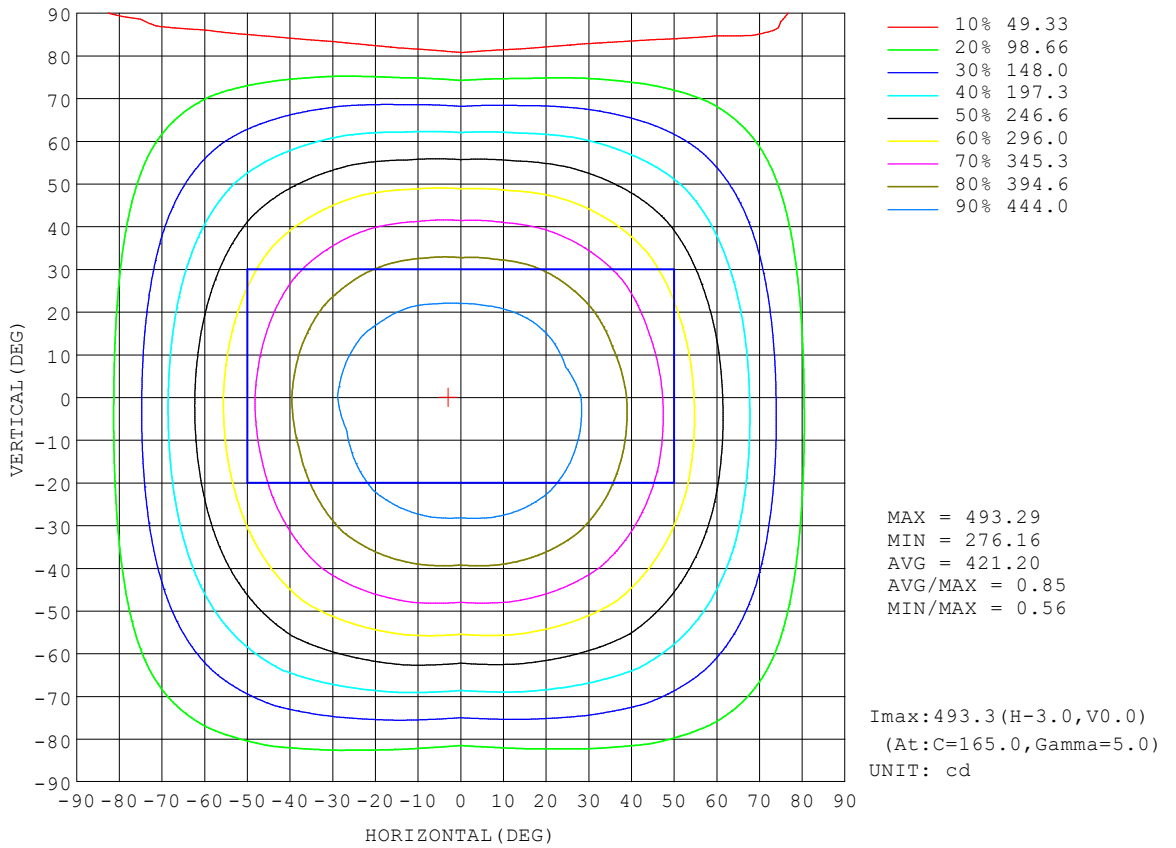
REFLECTANCE										
Ceiling	0.8	0.8	0.8	0.7	0.7	0.7	0.5	0.5	0.5	0
Walls	0.7	0.5	0.3	0.7	0.5	0.3	0.7	0.5	0.3	0
Working plane	0.2	0.2	0.2	0.2	0.2	0.2	0.2	0.2	0.2	0
ROOM INDEX	UTILIZATION FACTORS (PERCENT) $k(RI) \times RCR = 5$									
k = 0.60	55	43	36	54	43	36	53	42	35	29
0.80	65	53	45	64	52	45	62	51	44	37
1.00	73	61	53	72	61	53	69	62	53	45
1.25	80	69	61	79	68	61	76	67	60	52
1.50	85	75	67	84	74	66	80	72	65	57
2.00	92	83	76	90	82	75	87	79	74	65
2.50	96	88	81	94	86	80	90	84	78	70
3.00	100	92	86	98	91	85	94	88	83	74
4.00	104	98	93	102	96	91	97	93	89	79
5.00	107	101	97	104	99	95	100	96	92	83
ROOM INDEX	UF(total)									Direct
According to DIN EN 13032-2 2004			Suspended				SHRNOM = 1.25			

C Range: 0 - 360DEG  
 C Interval: 15.0DEG  
 Test Speed: HIGH  
 Temperature:25.3°C  
 Operators:DAMIN  
 Test Date:2024-11-19

$\gamma$  Range: 0 - 90DEG  
 $\gamma$  Interval: 1.0DEG  
 Test System:EVERFINE GO-2000B\_V1 SYSTEM V2.00.473  
 Humidity:65.0%  
 Test Distance:9.401m [K=1.0000]  
 Remarks:

**ISOCANDELA DIAGRAM**

Test:U:230.39V I:0.0851A P:19.225W PF:0.9804 Freq:50.00Hz Lamp Flux:1615.12x1 lm		
NAME:	TYPE:	WEIGHT:
SPEC.: 4000K	DIM.:	SERIAL No.:
MFR.: EVERFINE	SUR.:	Shielding Angle:



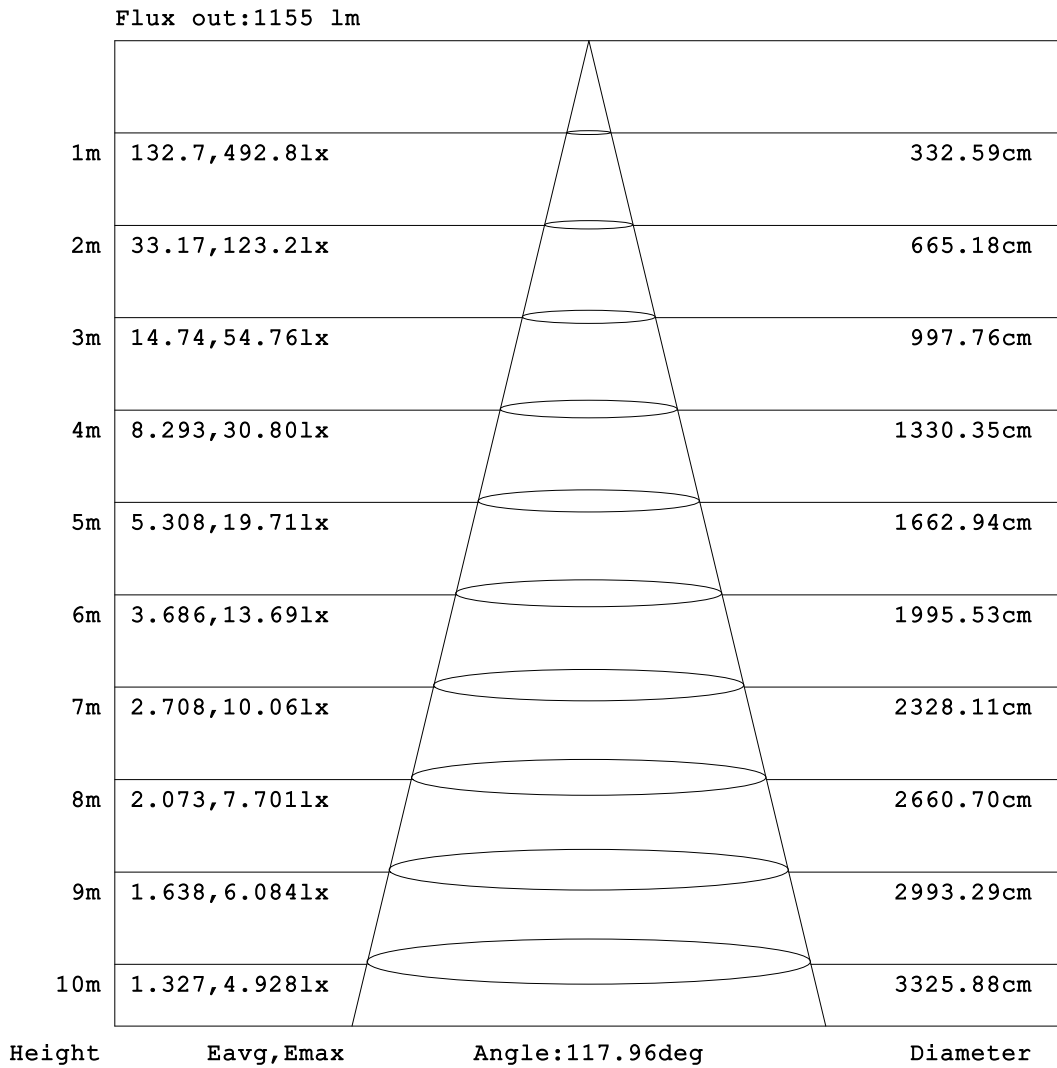
C Range: 0 - 360DEG  
 C Interval: 15.0DEG  
 Test Speed: HIGH  
 Temperature: 25.3°C  
 Operators: DAMIN  
 Test Date: 2024-11-19

γ Range: 0 - 90DEG  
 γ Interval: 1.0DEG  
 Test System: EVERFINE GO-2000B\_V1 SYSTEM V2.00.473  
 Humidity: 65.0%  
 Test Distance: 9.401m [K=1.0000]  
 Remarks:



**AAI Figure**

Test:U:230.39V I:0.0851A P:19.225W PF:0.9804 Freq:50.00Hz Lamp Flux:1615.12x1 lm		
NAME:	TYPE:	WEIGHT:
SPEC.: 4000K	DIM.:	SERIAL No.:
MFR.: EVERFINE	SUR.:	Shielding Angle:



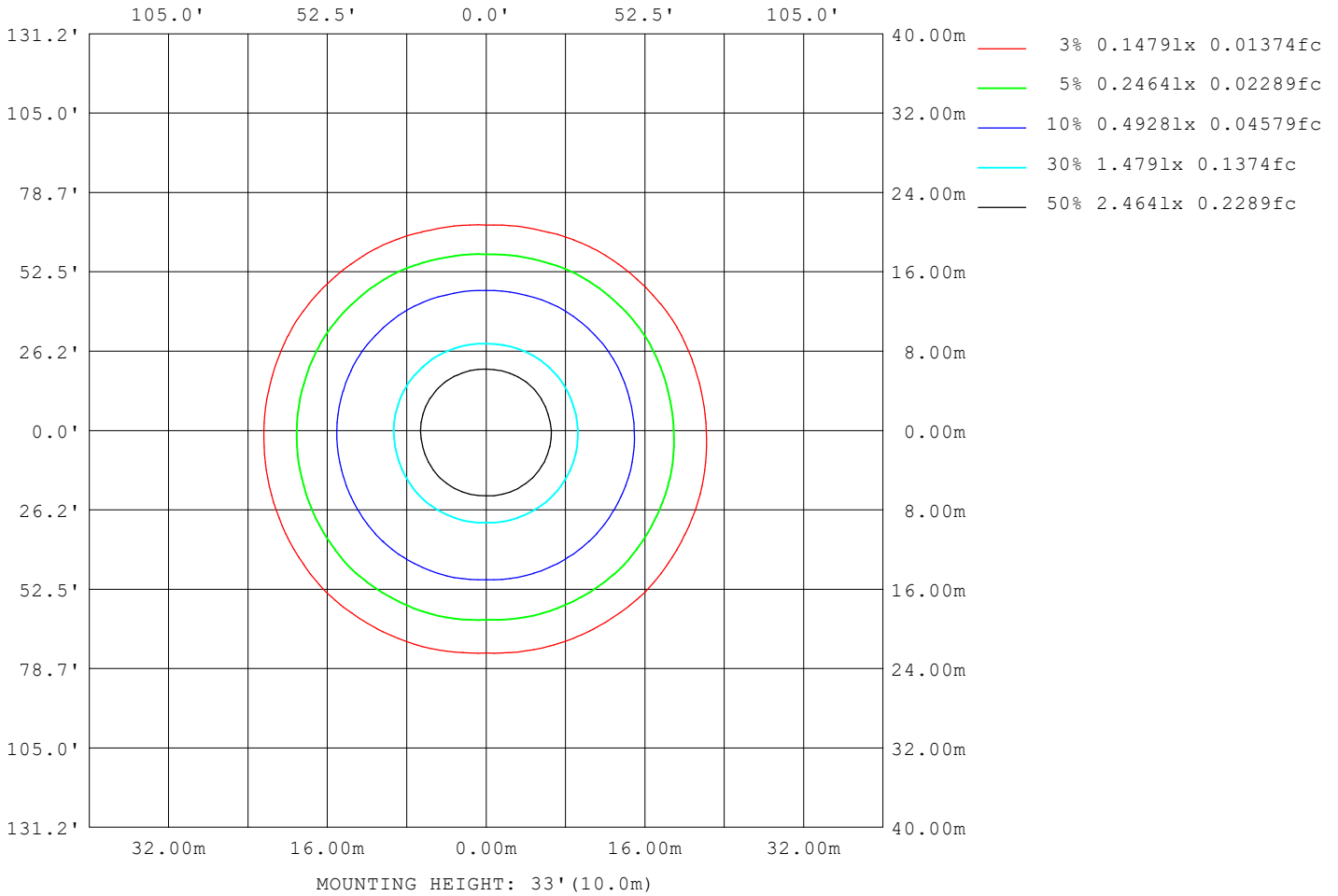
Note: The Curves indicate the illuminated area and the average illumination when the luminaire is at different distance.

C Range: 0 - 360DEG  
 C Interval: 15.0DEG  
 Test Speed: HIGH  
 Temperature: 25.3°C  
 Operators: DAMIN  
 Test Date: 2024-11-19

γ Range: 0 - 90DEG  
 γ Interval: 1.0DEG  
 Test System: EVERFINE GO-2000B\_V1 SYSTEM V2.00.473  
 Humidity: 65.0%  
 Test Distance: 9.401m [K=1.0000]  
 Remarks:

**ISOLUX DIAGRAM**

Test:U:230.39V I:0.0851A P:19.225W PF:0.9804 Freq:50.00Hz Lamp Flux:1615.12x1 lm		
NAME:	TYPE:	WEIGHT:
SPEC.: 4000K	DIM.:	SERIAL No.:
MFR.: EVERFINE	SUR.:	Shielding Angle:



C Range: 0 - 360DEG  
 C Interval: 15.0DEG  
 Test Speed: HIGH  
 Temperature:25.3°C  
 Operators:DAMIN  
 Test Date:2024-11-19

γ Range: 0 - 90DEG  
 γ Interval: 1.0DEG  
 Test System:EVERFINE GO-2000B\_V1 SYSTEM V2.00.473  
 Humidity:65.0%  
 Test Distance:9.401m [K=1.0000]  
 Remarks:

**LED Avg.L Report**

Test:U:230.39V I:0.0851A P:19.225W PF:0.9804 Freq:50.00Hz Lamp Flux:1615.12x1 lm		
NAME:	TYPE:	WEIGHT:
SPEC.: 4000K	DIM.:	SERIAL No.:
MFR.: EVERFINE	SUR.:	Shielding Angle:

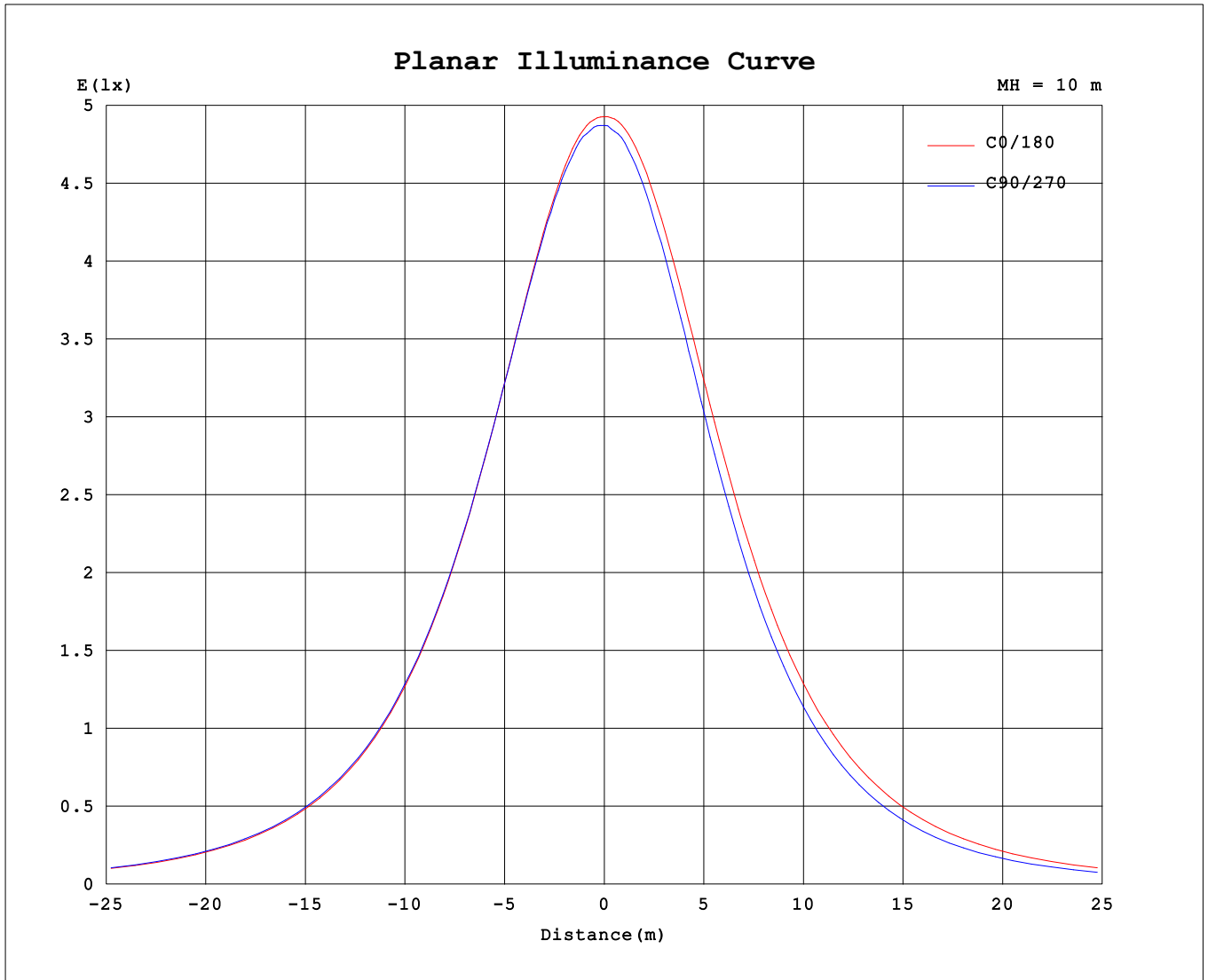
AvgL	cd/m2
L_0~180 (65) av	5196
L_0~180 (75) av	5454
L_0~180 (85) av	8171
L_90~270 (65) av	4730
L_90~270 (75) av	4658
L_90~270 (85) av	5575
L_45 (65) av	5233
L_45 (75) av	5546
L_45 (85) av	8345

Standard: GB/T 29293-2012

C Range: 0 - 360DEG  
 C Interval: 15.0DEG  
 Test Speed: HIGH  
 Temperature:25.3°C  
 Operators:DAMIN  
 Test Date:2024-11-19

γ Range: 0 - 90DEG  
 γ Interval: 1.0DEG  
 Test System:EVERFINE GO-2000B\_V1 SYSTEM V2.00.473  
 Humidity:65.0%  
 Test Distance:9.401m [K=1.0000]  
 Remarks:

**Planar Illuminance Curve**



C Range: 0 - 360DEG  
 C Interval: 15.0DEG  
 Test Speed: HIGH  
 Temperature: 25.3°C  
 Operators: DAMIN  
 Test Date: 2024-11-19

γ Range: 0 - 90DEG  
 γ Interval: 1.0DEG  
 Test System: EVERFINE GO-2000B\_V1 SYSTEM V2.00.473  
 Humidity: 65.0%  
 Test Distance: 9.401m [K=1.0000]  
 Remarks:

LUMINOUS DISTRIBUTION INTENSITY DATA

Test:U:230.39V I:0.0851A P:19.225W PF:0.9804 Freq:50.00Hz Lamp Flux:1615.12x1 lm		
NAME:	TYPE:	WEIGHT:
SPEC.: 4000K	DIM.:	SERIAL No.:
MFR.: EVERFINE	SUR.:	Shielding Angle:

Table--1

UNIT: cd

C (DEG) \ γ (DEG)	0	15	30	45	60	75	90	105	120	135	150	165	180	195	210	225	240	255	270
0	488	488	488	488	488	488	488	488	488	488	488	488	488	488	488	488	488	488	488
5	488	488	489	489	489	489	488	488	489	489	488	490	488	488	487	487	486	485	486
10	484	486	487	487	487	487	486	486	487	488	487	486	485	484	483	482	480	479	478
15	477	479	481	482	481	481	479	481	482	482	481	481	478	477	476	473	471	468	466
20	466	469	471	472	472	471	469	472	473	473	472	471	468	466	464	461	457	454	451
25	451	455	457	459	459	458	455	458	460	461	459	456	453	452	449	444	440	435	432
30	432	437	440	442	442	441	438	441	443	444	442	439	435	433	430	424	419	413	409
35	410	415	419	422	422	420	417	421	423	424	422	419	413	411	407	401	394	387	383
40	385	391	395	398	398	396	392	396	400	401	398	395	388	386	382	375	367	359	354
45	356	363	368	372	371	368	364	370	373	374	371	367	361	358	353	345	338	327	323
50	325	333	338	342	341	339	333	340	344	345	341	338	331	327	323	313	305	294	289
55	291	300	305	310	308	306	300	308	311	314	309	305	297	293	289	279	270	258	252
60	254	264	269	276	274	271	264	272	276	279	274	270	261	257	253	242	233	220	213
65	216	227	232	239	236	234	226	236	239	243	237	232	223	218	214	204	194	181	174
70	176	187	194	200	198	195	187	196	201	205	199	193	184	179	175	164	155	142	133
75	138	148	156	161	159	155	148	157	162	166	161	154	144	141	135	125	115	101	92.7
80	101	111	119	124	122	117	110	119	125	128	124	117	107	104	98.0	88.0	77.0	63.9	54.6
85	68.9	78.7	85.9	89.8	87.7	82.1	75.1	83.6	90.0	93.0	89.9	83.2	73.6	70.7	65.2	55.5	44.4	31.4	22.1
90	51.1	57.9	63.5	65.5	63.4	57.0	50.3	56.6	62.1	63.4	61.3	56.0	49.7	48.1	41.8	32.4	22.0	10.5	2.05

C Range: 0 - 360DEG	γ Range: 0 - 90DEG
C Interval: 15.0DEG	γ Interval: 1.0DEG
Test Speed: HIGH	Test System:EVERFINE GO-2000B_V1 SYSTEM V2.00.473
Temperature:25.3℃	Humidity:65.0%
Operators:DAMIN	Test Distance:9.401m [K=1.0000]
Test Date:2024-11-19	Remarks:

LUMINOUS DISTRIBUTION INTENSITY DATA

Test:U:230.39V I:0.0851A P:19.225W PF:0.9804 Freq:50.00Hz		
Lamp Flux:1615.12x1 lm		
NAME:	TYPE:	WEIGHT:
SPEC.: 4000K	DIM.:	SERIAL No.:
MFR.: EVERFINE	SUR.:	Shielding Angle:

Table--2

UNIT: cd

C (DEG) γ (DEG)	285	300	315	330	345													
0	488	488	488	488	488													
5	485	486	486	487	487													
10	479	480	481	483	484													
15	468	471	472	475	477													
20	453	457	460	463	466													
25	434	439	443	447	449													
30	412	419	423	428	431													
35	386	394	399	405	408													
40	358	366	371	379	383													
45	327	336	342	351	355													
50	293	303	310	319	323													
55	257	269	275	284	288													
60	219	231	239	248	252													
65	180	192	199	209	214													
70	140	152	160	170	174													
75	100	112	122	130	135													
80	62.5	74.6	84.5	93.3	98.4													
85	30.3	42.5	52.6	61.5	66.7													
90	10.8	22.7	34.1	43.4	49.4													

C Range: 0 - 360DEG	γ Range: 0 - 90DEG
C Interval: 15.0DEG	γ Interval: 1.0DEG
Test Speed: HIGH	Test System:EVERFINE GO-2000B_V1 SYSTEM V2.00.473
Temperature:25.3℃	Humidity:65.0%
Operators:DAMIN	Test Distance:9.401m [K=1.0000]
Test Date:2024-11-19	Remarks: