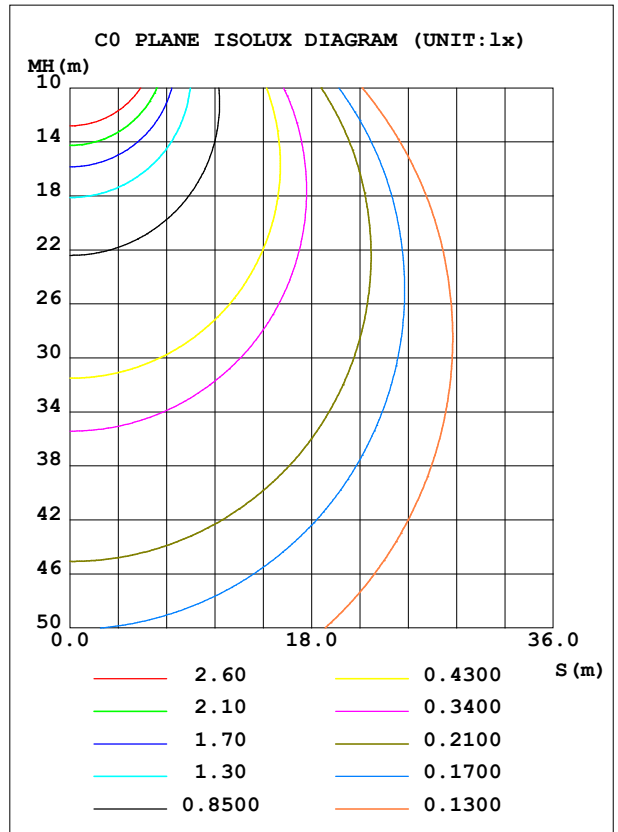
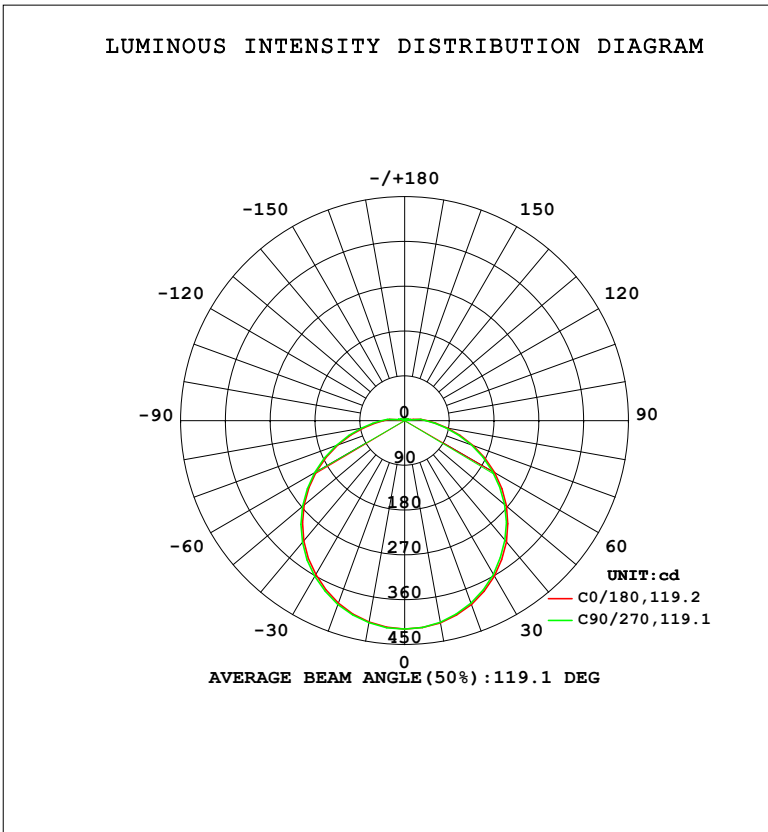


LUMINAIRE PHOTOMETRIC TEST REPORT

Test:U:220.35V I:0.0559A P:11.880W PF:0.9641 Freq:50.00Hz Lamp Flux:1397.44x1 lm		
NAME: 明装	TYPE:	WEIGHT:
SPEC.:	DIM.:	SERIAL No.:
MFR.: EVERFINE	SUR.:	Shielding Angle:

DATA OF LAMP		PHOTOMETRIC DATA				Eff: 117.63 lm/W
MODEL	O1	I _{max} (cd)	418.8	S/MH (C0/180)	1.27	
NOMINAL POWER (W)	12	LOR (%)	100.0	S/MH (C90/270)	1.28	
RATED VOLTAGE (V)	220	TOTAL FLUX (lm)	1397.4	η UP, DN (C0-180)	2.0, 47.8	
NOMINAL FLUX (lm)	1397.44	CIE CLASS	DIRECT	η UP, DN (C180-360)	2.0, 48.2	
LAMPS INSIDE	1	η up (%)	4.0	CIBSE SHR NOM	1.25	
TEST VOLTAGE (V)	219.5	η down (%)	96.0	CIBSE SHR MAX	1.35	



C Range: 0 - 360DEG
 C Interval: 22.5DEG
 Test Speed: HIGH
 Temperature: 25.3°C
 Operators: DAMIN
 Test Date: 2023-11-15

γ Range: 0 - 180DEG
 γ Interval: 5.0DEG
 Test System: EVERFINE GO-2000B_V1 SYSTEM V2.00.473
 Humidity: 65.0%
 Test Distance: 9.401m [K=1.0000]
 Remarks:

ZONAL FLUX DIAGRAM

ZONAL FLUX DIAGRAM:

γ	C0	C45	C90	C135	C180	C225	C270	C315	γ	Φ zone	Φ total	%lum,lamp
10	412.6	412.0	411.3	411.0	411.1	412.0	412.5	413.1	0- 10	39.64	39.64	2.84,2.84
20	392.9	391.7	390.1	389.4	390.4	391.6	393.0	393.7	10- 20	113.9	153.5	11,11
30	360.8	359.3	357.4	356.3	357.3	359.2	361.3	363.4	20- 30	173.7	327.2	23.4,23.4
40	318.2	316.6	313.3	312.9	315.8	317.1	319.6	321.6	30- 40	212.3	539.5	38.6,38.6
50	266.9	265.2	261.9	261.1	263.8	265.3	268.1	270.1	40- 50	225.3	764.8	54.7,54.7
60	208.8	207.5	204.0	203.2	205.1	206.3	209.1	211.9	50- 60	211.8	976.6	69.9,69.9
70	146.9	145.3	142.6	141.3	142.4	144.2	146.6	148.9	60- 70	174.4	1151	82.4,82.4
80	86.84	85.59	83.64	82.46	83.27	84.90	87.67	88.73	70- 80	120.9	1272	91,91
90	45.03	44.28	43.66	42.65	42.96	43.52	46.78	46.79	80- 90	69.30	1341	96,96
100	17.94	9.094	9.059	4.256	14.76	4.514	11.16	10.83	90-100	32.01	1373	98.3,98.3
110	1.928	8.016	3.098	7.433	2.008	9.237	3.866	8.167	100-110	7.827	1381	98.8,98.8
120	6.684	3.906	7.302	3.806	6.151	4.564	8.593	4.092	110-120	5.990	1387	99.3,99.3
130	2.640	2.517	2.832	2.541	2.726	2.668	3.430	2.663	120-130	3.529	1391	99.5,99.5
140	2.873	2.691	2.816	2.718	3.039	2.811	2.889	2.834	130-140	2.149	1393	99.7,99.7
150	2.986	3.038	3.064	3.053	3.134	3.093	3.131	3.108	140-150	1.871	1395	99.8,99.8
160	3.322	3.404	3.426	3.376	3.406	3.417	3.445	3.431	150-160	1.491	1396	99.9,99.9
170	3.689	3.650	3.662	3.620	3.760	3.638	3.711	3.657	160-170	1.000	1397	100,100
180	3.772	3.800	3.747	3.784	3.790	3.830	3.765	3.791	170-180	0.3563	1397	100,100
DEG	LUMINOUS INTENSITY:cd									UNIT:lm		

Conical surface Flux(90deg): 652.23 lm

%lum = 46.7%

%lamp = 46.7%

Conical surface Flux(130deg): 1069.7 lm

%lum = 76.5%

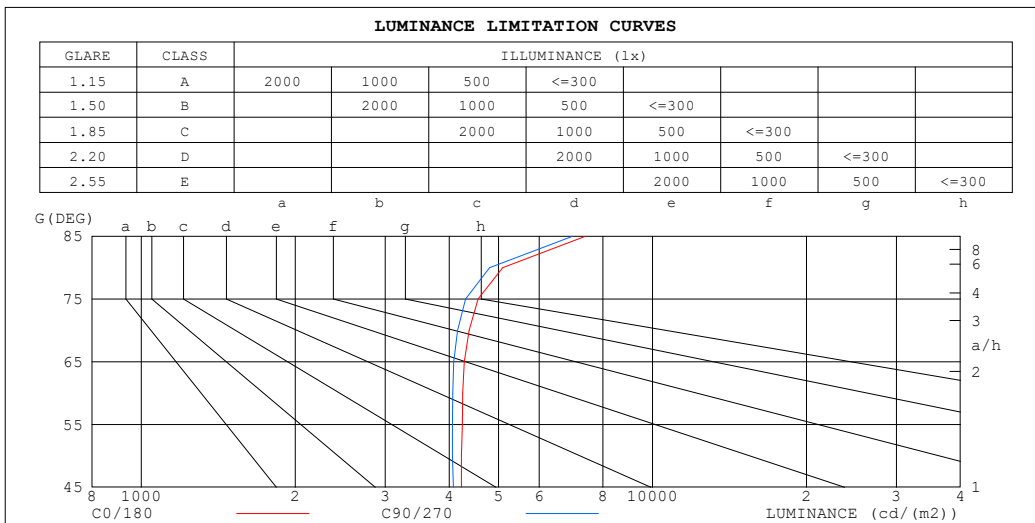
%lamp = 76.5%

C Range: 0 - 360DEG
 C Interval: 22.5DEG
 Test Speed: HIGH
 Temperature:25.3°C
 Operators:DAMIN
 Test Date:2023-11-15

γ Range: 0 - 180DEG
 γ Interval: 5.0DEG
 Test System:EVERFINE GO-2000B_V1 SYSTEM V2.00.473
 Humidity:65.0%
 Test Distance:9.401m [K=1.0000]
 Remarks:

LUMINANCE LIMITATION CURVES

Test:U:220.35V I:0.0559A P:11.880W PF:0.9641 Freq:50.00Hz Lamp Flux:1397.44x1 lm		
NAME: 明装	TYPE:	WEIGHT:
SPEC.:	DIM.:	SERIAL No.:
MFR.: EVERFINE	SUR.:	Shielding Angle:



LUMINANCE cd/(m2)		
G (DEG)	C0/180	C90/270
85	7382	6976
80	5094	4799
75	4554	4307
70	4374	4156
65	4285	4082
60	4254	4066
55	4247	4061
50	4230	4060
45	4229	4078

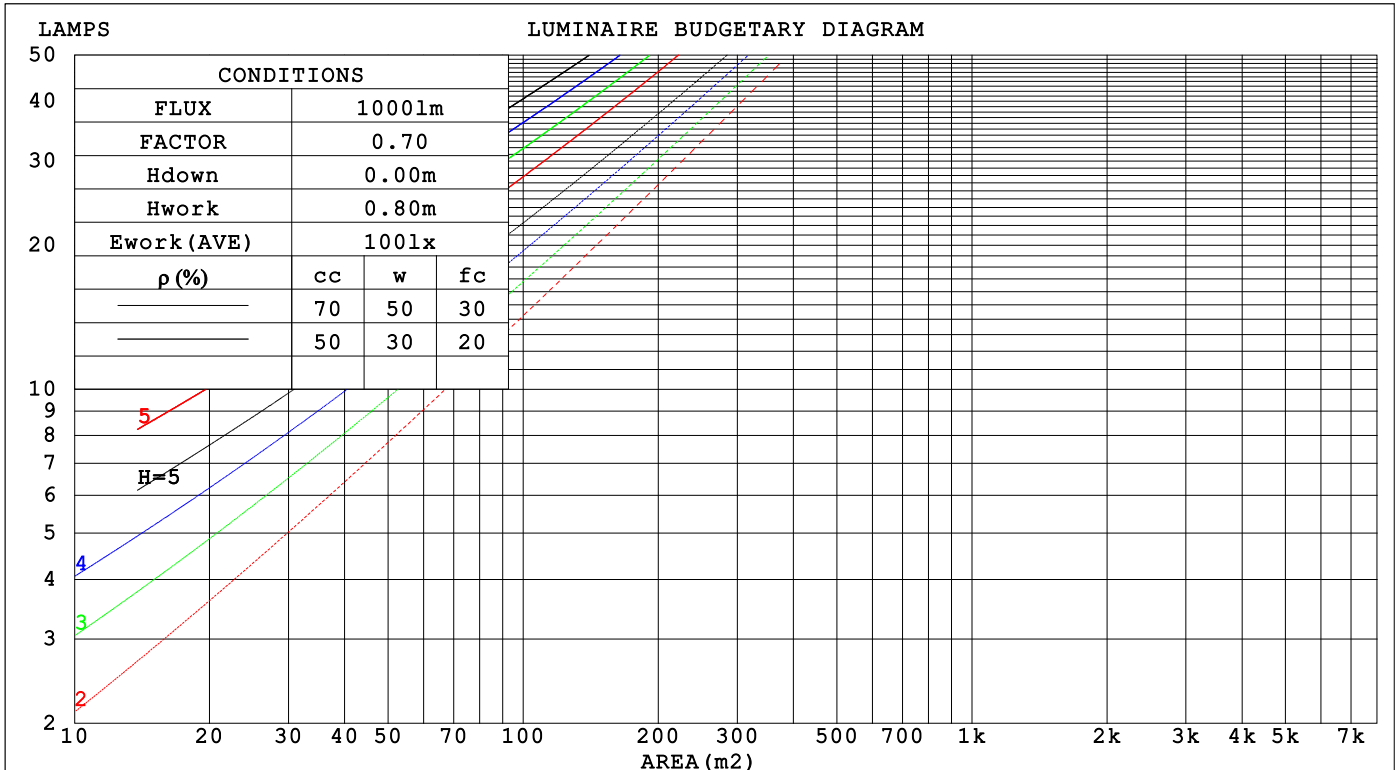
C Range: 0 - 360DEG
 C Interval: 22.5DEG
 Test Speed: HIGH
 Temperature:25.3°C
 Operators:DAMIN
 Test Date:2023-11-15

γ Range: 0 - 180DEG
 γ Interval: 5.0DEG
 Test System:EVERFINE GO-2000B_V1 SYSTEM V2.00.473
 Humidity:65.0%
 Test Distance:9.401m [K=1.0000]
 Remarks:

CU AND LUMINAIRE BUDGETARY ESTIMATE DIAGRAM

Test:U:220.35V I:0.0559A P:11.880W PF:0.9641 Freq:50.00Hz Lamp Flux:1397.44x1 lm		
NAME: 明装	TYPE:	WEIGHT:
SPEC.:	DIM.:	SERIAL No.:
MFR.: EVERFINE	SUR.:	Shielding Angle:

ρcc	80%			70%			50%			30%			10%			0
ρw	50%	30%	10%	50%	30%	10%	50%	30%	10%	50%	30%	10%	50%	30%	10%	0
ρfc	20%			20%			20%			20%			20%			0
RCR	RCR:Room Cavity Ratio Coefficients of Utilization(CU)															
0.0	1.18	1.18	1.18	1.15	1.15	1.15	1.09	1.09	1.09	1.03	1.03	1.03	.98	.98	.98	.96
1.0	1.01	.96	.91	.98	.94	.89	.93	.89	.86	.88	.85	.83	.84	.82	.79	.77
2.0	.87	.79	.73	.85	.78	.72	.80	.75	.70	.76	.72	.67	.73	.69	.65	.63
3.0	.76	.67	.60	.74	.66	.59	.70	.63	.58	.67	.61	.56	.64	.59	.55	.52
4.0	.67	.58	.50	.65	.57	.50	.62	.55	.49	.59	.53	.48	.57	.51	.47	.44
5.0	.60	.50	.43	.58	.49	.43	.56	.48	.42	.53	.46	.41	.51	.45	.40	.38
6.0	.53	.44	.38	.52	.44	.37	.50	.42	.37	.48	.41	.36	.46	.40	.35	.33
7.0	.48	.39	.33	.47	.39	.33	.45	.38	.32	.44	.37	.32	.42	.36	.31	.29
8.0	.44	.35	.29	.43	.35	.29	.41	.34	.29	.40	.33	.28	.38	.32	.28	.26
9.0	.40	.32	.26	.40	.32	.26	.38	.31	.26	.37	.30	.25	.35	.29	.25	.23
10.0	.37	.29	.24	.37	.29	.24	.35	.28	.23	.34	.28	.23	.33	.27	.23	.21



C Range: 0 - 360DEG
 C Interval: 22.5DEG
 Test Speed: HIGH
 Temperature:25.3°C
 Operators:DAMIN
 Test Date:2023-11-15

γ Range: 0 - 180DEG
 γ Interval: 5.0DEG
 Test System:EVERFINE GO-2000B_V1 SYSTEM V2.00.473
 Humidity:65.0%
 Test Distance:9.401m [K=1.0000]
 Remarks:

WEC AND CCEC

Test:U:220.35V I:0.0559A P:11.880W PF:0.9641 Freq:50.00Hz								
Lamp Flux:1397.44x1 lm								
NAME: 明装			TYPE:			WEIGHT:		
SPEC.:			DIM.:			SERIAL No.:		
MFR.: EVERFINE			SUR.:			Shielding Angle:		

ρ _{CC}	80%			70%			50%			30%			10%			0
ρ _w	50%	30%	10%	50%	30%	10%	50%	30%	10%	50%	30%	10%	50%	30%	10%	0
ρ _{fc}	20%			20%			20%			20%			20%			0
RCR	RCR:Room Cavity Ratio						Wall Exitance Coefficients (WEC)									
0.0																
1.0	.352	.200	.063	.344	.196	.062	.328	.188	.060	.314	.181	.058	.300	.174	.056	
2.0	.317	.174	.053	.309	.170	.052	.295	.164	.051	.282	.158	.050	.270	.153	.048	
3.0	.287	.153	.046	.280	.150	.045	.267	.145	.044	.256	.140	.043	.245	.136	.042	
4.0	.261	.136	.040	.255	.133	.039	.244	.129	.039	.233	.125	.038	.224	.122	.037	
5.0	.239	.122	.035	.234	.120	.035	.224	.116	.034	.214	.113	.034	.206	.110	.033	
6.0	.220	.110	.032	.215	.109	.031	.206	.106	.031	.198	.103	.030	.190	.100	.030	
7.0	.204	.101	.029	.200	.099	.028	.192	.097	.028	.184	.094	.027	.177	.092	.027	
8.0	.190	.093	.026	.186	.092	.026	.179	.089	.025	.172	.087	.025	.165	.085	.025	
9.0	.177	.086	.024	.174	.085	.024	.167	.083	.023	.161	.081	.023	.155	.079	.023	
10.0	.166	.080	.022	.163	.079	.022	.157	.077	.022	.151	.075	.021	.146	.073	.021	

ρ _{CC}	80%			70%			50%			30%			10%			0
ρ _w	50%	30%	10%	50%	30%	10%	50%	30%	10%	50%	30%	10%	50%	30%	10%	0
ρ _{fc}	20%			20%			20%			20%			20%			0
RCR	RCR:Room Cavity Ratio						Ceiling Cavity Exitance Coefficients (CCEC)									
0.0	.221	.221	.221	.189	.189	.189	.129	.129	.129	.074	.074	.074	.024	.024	.024	
1.0	.214	.187	.162	.183	.160	.139	.125	.110	.096	.072	.064	.056	.023	.021	.018	
2.0	.207	.163	.126	.177	.140	.109	.121	.097	.076	.070	.056	.045	.022	.018	.015	
3.0	.199	.146	.103	.171	.126	.089	.117	.087	.063	.068	.051	.037	.022	.017	.012	
4.0	.191	.133	.088	.164	.115	.076	.113	.080	.054	.065	.047	.032	.021	.015	.010	
5.0	.184	.122	.077	.158	.106	.067	.109	.074	.048	.063	.043	.028	.020	.014	.009	
6.0	.176	.114	.070	.151	.099	.061	.104	.069	.043	.061	.041	.026	.020	.013	.008	
7.0	.169	.107	.064	.145	.093	.056	.100	.065	.040	.058	.038	.024	.019	.013	.008	
8.0	.162	.102	.060	.140	.088	.052	.097	.062	.037	.056	.037	.022	.018	.012	.007	
9.0	.156	.097	.057	.134	.084	.049	.093	.059	.035	.054	.035	.021	.018	.011	.007	
10.0	.150	.092	.054	.130	.080	.047	.090	.056	.033	.052	.033	.020	.017	.011	.007	

C Range: 0 - 360DEG
 C Interval: 22.5DEG
 Test Speed: HIGH
 Temperature:25.3°C
 Operators:DAMIN
 Test Date:2023-11-15

γ Range: 0 - 180DEG
 γ Interval: 5.0DEG
 Test System:EVERFINE GO-2000B_V1 SYSTEM V2.00.473
 Humidity:65.0%
 Test Distance:9.401m [K=1.0000]
 Remarks:

UGR(Unified Glare Rating) Table

Test:U:220.35V I:0.0559A P:11.880W PF:0.9641 Freq:50.00Hz										
Lamp Flux:1397.44x1 lm										
NAME: 明装			TYPE:				WEIGHT:			
SPEC.:			DIM.:				SERIAL No.:			
MFR.: EVERFINE			SUR.:				Shielding Angle:			
ceiling/cavity	0.7	0.7	0.5	0.5	0.3	0.7	0.7	0.5	0.5	0.3
walls	0.5	0.3	0.5	0.3	0.3	0.5	0.3	0.5	0.3	0.3
working plane	0.2	0.2	0.2	0.2	0.2	0.2	0.2	0.2	0.2	0.2
Room dimensions	Viewed crosswise					Viewed endwise				
x = 2H y = 2H	16.5	18.1	16.9	18.3	18.6	16.4	17.9	16.7	18.2	18.5
3H	18.4	19.8	18.7	20.1	20.4	18.2	19.6	18.5	19.9	20.2
4H	19.2	20.6	19.6	20.9	21.3	19.0	20.3	19.4	20.7	21.0
6H	20.0	21.3	20.4	21.6	22.0	19.8	21.0	20.2	21.4	21.7
8H	20.4	21.6	20.8	22.0	22.4	20.1	21.4	20.5	21.7	22.1
12H	20.8	22.0	21.3	22.4	22.8	20.5	21.7	21.0	22.1	22.5
4H 2H	17.2	18.5	17.6	18.9	19.2	17.1	18.4	17.4	18.7	19.1
3H	19.2	20.4	19.6	20.8	21.2	19.1	20.2	19.5	20.6	21.0
4H	20.2	21.3	20.7	21.7	22.1	20.0	21.1	20.5	21.5	21.9
6H	21.2	22.2	21.7	22.6	23.1	21.0	21.9	21.4	22.4	22.8
8H	21.7	22.6	22.2	23.0	23.5	21.4	22.3	21.9	22.8	23.3
12H	22.2	23.1	22.7	23.5	24.0	21.9	22.8	22.4	23.3	23.7
8H 4H	20.6	21.5	21.1	22.0	22.4	20.4	21.3	20.9	21.8	22.3
6H	21.8	22.6	22.3	23.0	23.6	21.6	22.4	22.1	22.8	23.4
8H	22.4	23.1	22.9	23.6	24.1	22.2	22.9	22.7	23.4	23.9
12H	23.2	23.8	23.7	24.3	24.8	22.9	23.5	23.5	24.0	24.6
12H 4H	20.7	21.5	21.1	22.0	22.4	20.5	21.3	21.0	21.8	22.3
6H	21.9	22.6	22.5	23.1	23.7	21.7	22.4	22.3	22.9	23.5
8H	22.6	23.2	23.2	23.8	24.3	22.4	23.0	23.0	23.6	24.1
Variations with the observer position at spacings(CIE Pub.117):										
S = 1.0H	+ 0.1 / - 0.1					+ 0.1 / - 0.1				
1.5H	+ 0.2 / - 0.3					+ 0.2 / - 0.3				
2.0H	+ 0.1 / - 0.3					+ 0.2 / - 0.3				

CIE Pub.117, 1397 lm Total Lamp Luminous Flux Correct (8log(F/F0) = 1.2)
 Area: 0.1 m2

C Range: 0 - 360DEG
 C Interval: 22.5DEG
 Test Speed: HIGH
 Temperature:25.3°C
 Operators:DAMIN
 Test Date:2023-11-15

γ Range: 0 - 180DEG
 γ Interval: 5.0DEG
 Test System:EVERFINE GO-2000B_V1 SYSTEM V2.00.473
 Humidity:65.0%
 Test Distance:9.401m [K=1.0000]
 Remarks:

UTILIZATION FACTORS TABLE

Test:U:220.35V I:0.0559A P:11.880W PF:0.9641 Freq:50.00Hz Lamp Flux:1397.44x1 lm		
NAME: 明装	TYPE:	WEIGHT:
SPEC.:	DIM.:	SERIAL No.:
MFR.: EVERFINE	SUR.:	Shielding Angle:

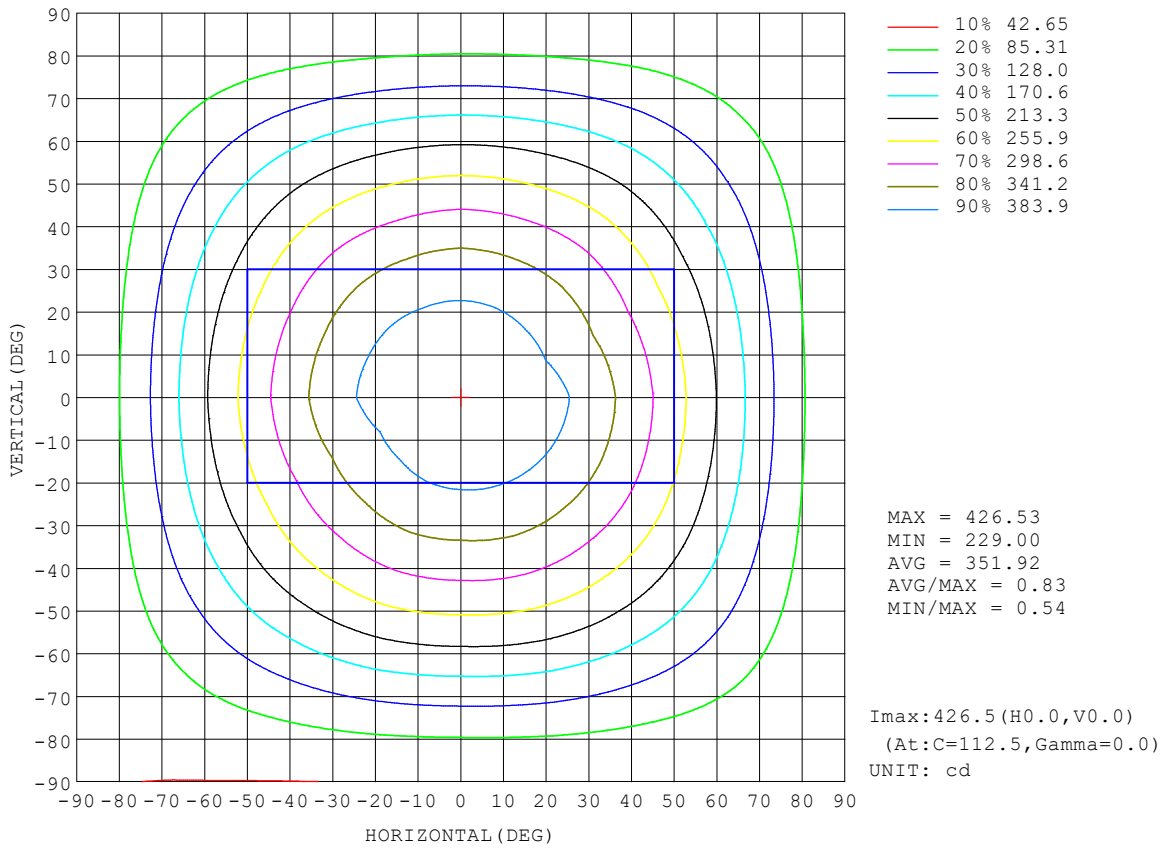
REFLECTANCE										
Ceiling	0.8	0.8	0.8	0.7	0.7	0.7	0.5	0.5	0.5	0
Walls	0.7	0.5	0.3	0.7	0.5	0.3	0.7	0.5	0.3	0
Working plane	0.2	0.2	0.2	0.2	0.2	0.2	0.2	0.2	0.2	0
ROOM INDEX	UTILIZATION FACTORS (PERCENT) $k(RI) \times RCR = 5$									
k = 0.60	54	42	35	53	42	35	52	41	34	28
0.80	64	51	44	63	51	43	61	50	43	36
1.00	72	60	52	70	59	52	68	61	51	43
1.25	79	67	60	77	67	59	74	65	58	50
1.50	84	73	65	82	72	65	79	70	63	55
2.00	91	81	74	89	80	73	85	77	71	62
2.50	95	86	79	93	85	78	88	82	76	67
3.00	99	91	84	96	89	83	91	85	80	71
4.00	103	96	91	100	94	89	95	90	86	76
5.00	106	100	95	103	98	93	98	93	90	79
ROOM INDEX	UF(total)									Direct
According to DIN EN 13032-2 2004			Suspended				SHRNOM = 1.25			

C Range: 0 - 360DEG
 C Interval: 22.5DEG
 Test Speed: HIGH
 Temperature:25.3°C
 Operators:DAMIN
 Test Date:2023-11-15

γ Range: 0 - 180DEG
 γ Interval: 5.0DEG
 Test System:EVERFINE GO-2000B_V1 SYSTEM V2.00.473
 Humidity:65.0%
 Test Distance:9.401m [K=1.0000]
 Remarks:

ISOCANDELA DIAGRAM

Test:U:220.35V I:0.0559A P:11.880W PF:0.9641 Freq:50.00Hz Lamp Flux:1397.44x1 lm		
NAME: 明装	TYPE:	WEIGHT:
SPEC.:	DIM.:	SERIAL No.:
MFR.: EVERFINE	SUR.:	Shielding Angle:

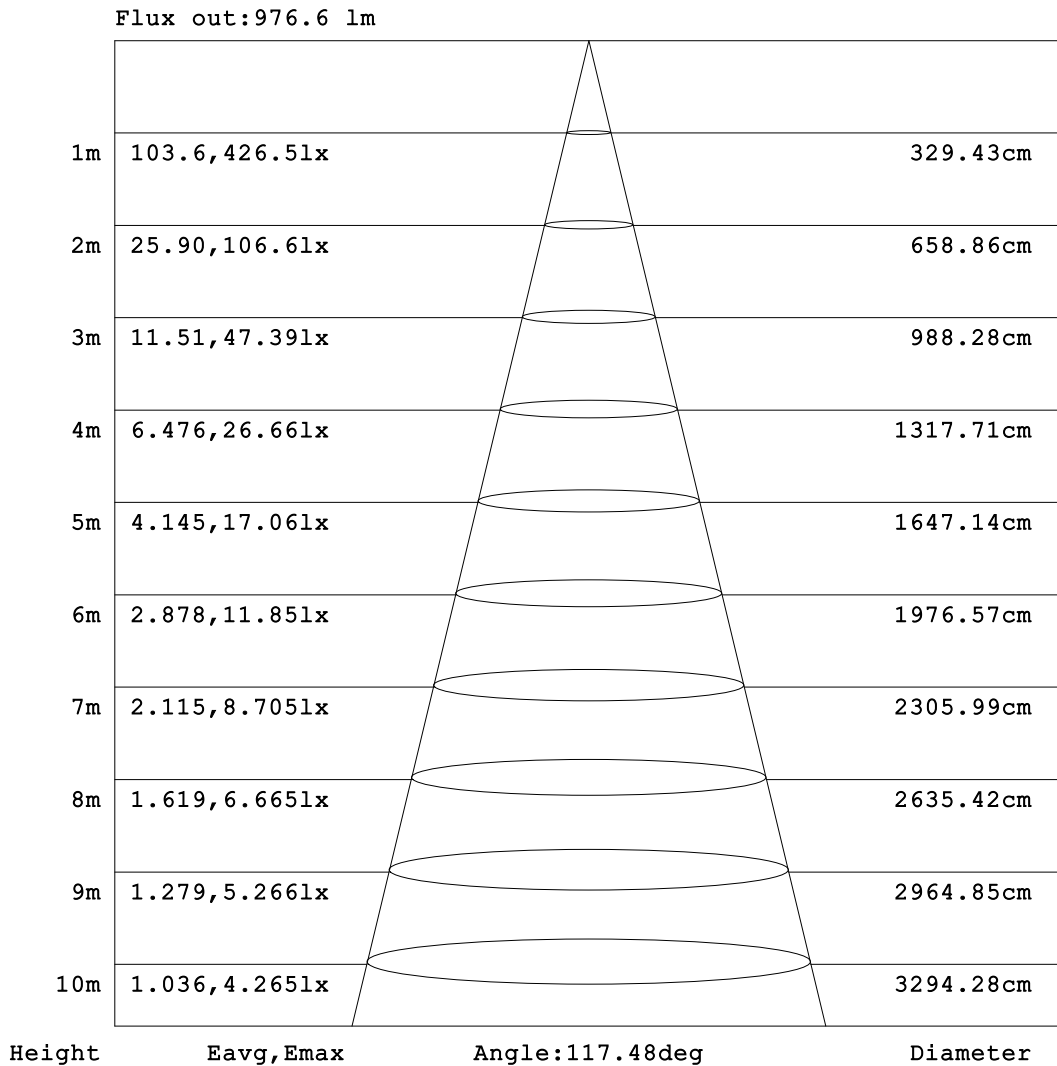


C Range: 0 - 360DEG
 C Interval: 22.5DEG
 Test Speed: HIGH
 Temperature: 25.3°C
 Operators: DAMIN
 Test Date: 2023-11-15

γ Range: 0 - 180DEG
 γ Interval: 5.0DEG
 Test System: EVERFINE GO-2000B_V1 SYSTEM V2.00.473
 Humidity: 65.0%
 Test Distance: 9.401m [K=1.0000]
 Remarks:

AAI Figure

Test:U:220.35V I:0.0559A P:11.880W PF:0.9641 Freq:50.00Hz Lamp Flux:1397.44x1 lm		
NAME: 明装	TYPE:	WEIGHT:
SPEC.:	DIM.:	SERIAL No.:
MFR.: EVERFINE	SUR.:	Shielding Angle:



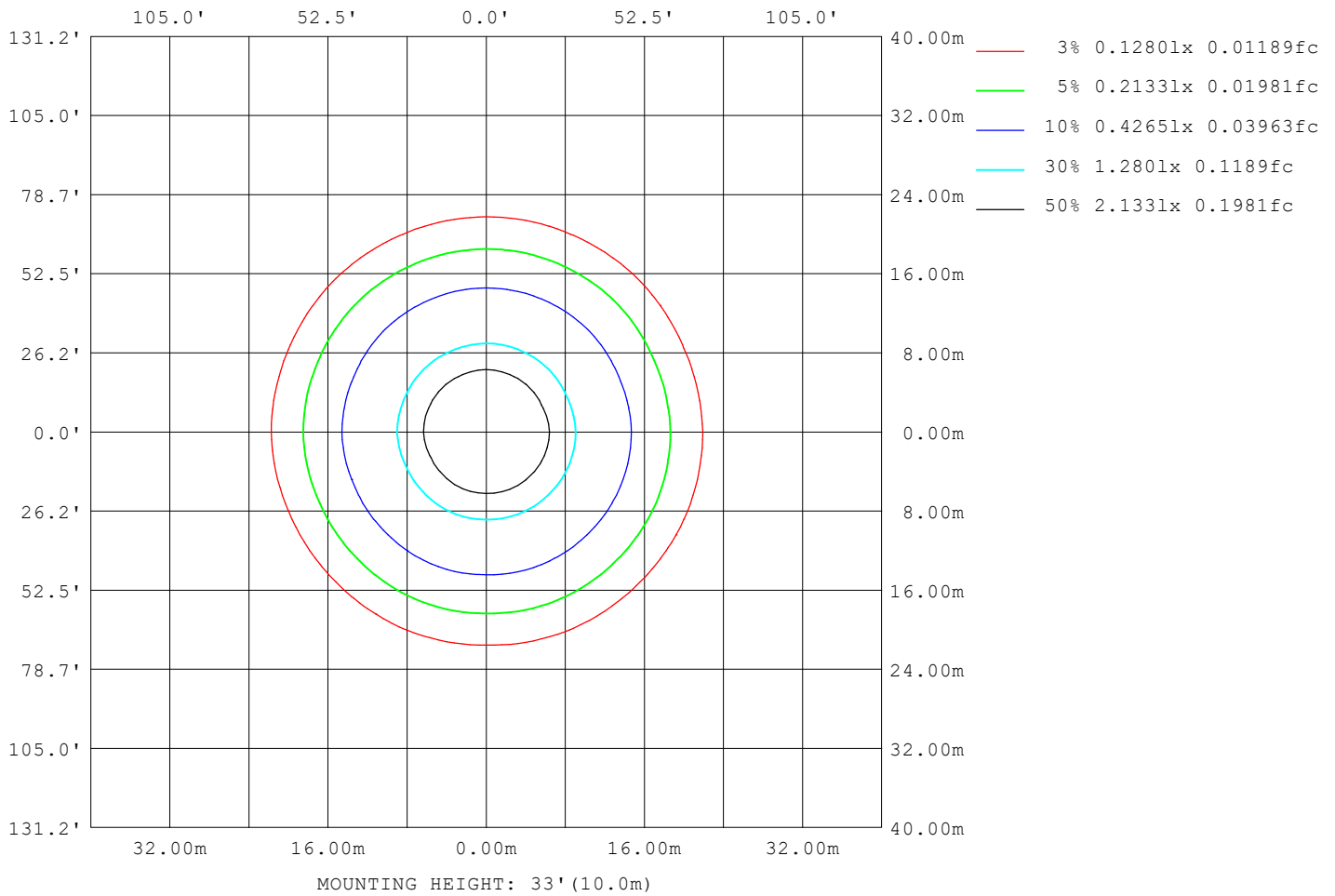
Note: The Curves indicate the illuminated area and the average illumination when the luminaire is at different distance.

C Range: 0 - 360DEG
 C Interval: 22.5DEG
 Test Speed: HIGH
 Temperature: 25.3°C
 Operators: DAMIN
 Test Date: 2023-11-15

γ Range: 0 - 180DEG
 γ Interval: 5.0DEG
 Test System: EVERFINE GO-2000B_V1 SYSTEM V2.00.473
 Humidity: 65.0%
 Test Distance: 9.401m [K=1.0000]
 Remarks:

ISOLUX DIAGRAM

Test:U:220.35V I:0.0559A P:11.880W PF:0.9641 Freq:50.00Hz Lamp Flux:1397.44x1 lm		
NAME: 明装	TYPE:	WEIGHT:
SPEC.:	DIM.:	SERIAL No.:
MFR.: EVERFINE	SUR.:	Shielding Angle:



C Range: 0 - 360DEG
 C Interval: 22.5DEG
 Test Speed: HIGH
 Temperature:25.3°C
 Operators:DAMIN
 Test Date:2023-11-15

γ Range: 0 - 180DEG
 γ Interval: 5.0DEG
 Test System:EVERFINE GO-2000B_V1 SYSTEM V2.00.473
 Humidity:65.0%
 Test Distance:9.401m [K=1.0000]
 Remarks:

LED Avg.L Report

Test:U:220.35V I:0.0559A P:11.880W PF:0.9641 Freq:50.00Hz Lamp Flux:1397.44x1 lm		
NAME: 明装	TYPE:	WEIGHT:
SPEC.:	DIM.:	SERIAL No.:
MFR.: EVERFINE	SUR.:	Shielding Angle:

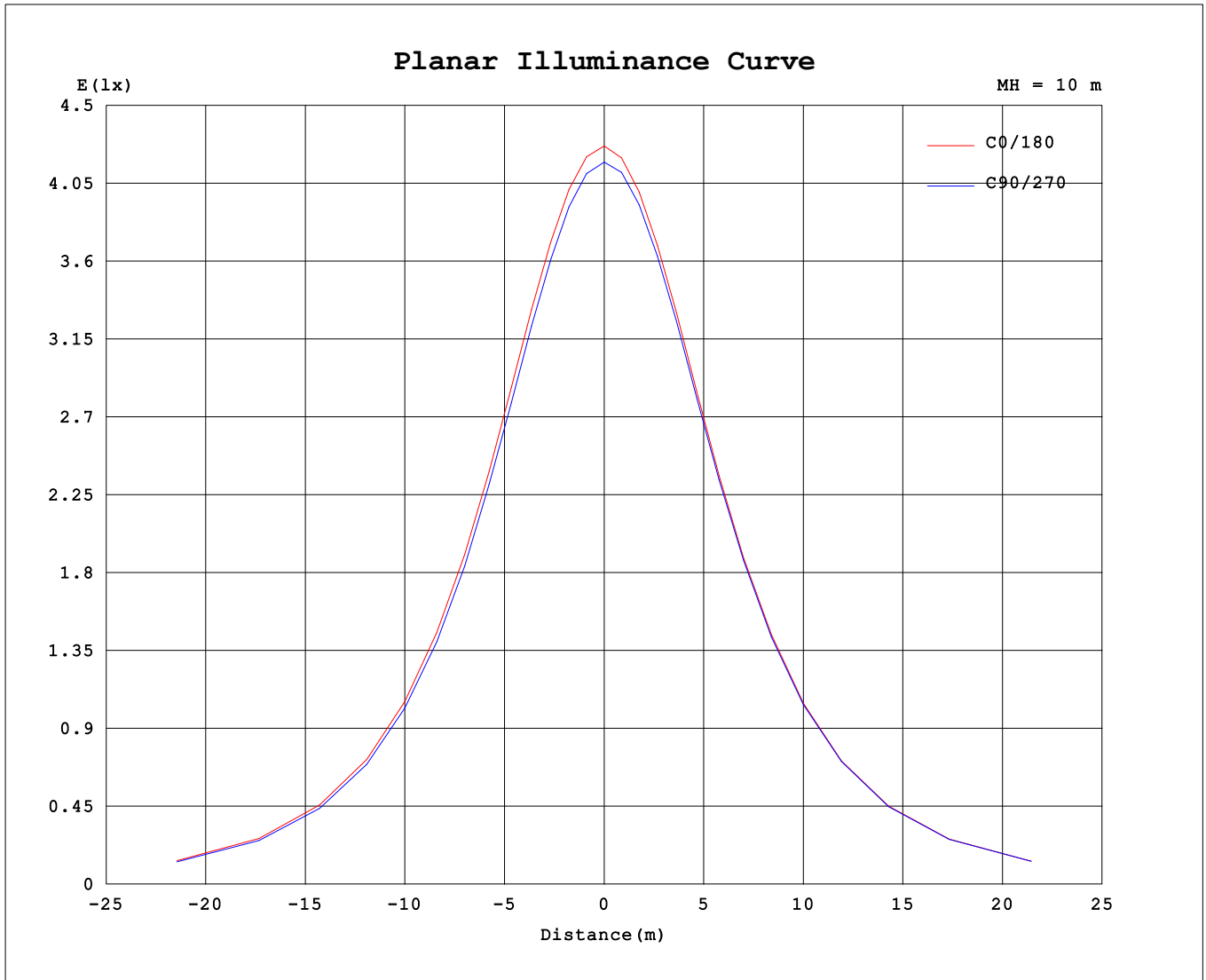
AvgL	cd/m2
L_0~180 (65) av	4162
L_0~180 (75) av	4387
L_0~180 (85) av	7082
L_90~270 (65) av	4156
L_90~270 (75) av	4399
L_90~270 (85) av	7191
L_45 (65) av	4171
L_45 (75) av	4399
L_45 (85) av	7132

Standard: GB/T 29293-2012

C Range: 0 - 360DEG
 C Interval: 22.5DEG
 Test Speed: HIGH
 Temperature:25.3°C
 Operators:DAMIN
 Test Date:2023-11-15

γ Range: 0 - 180DEG
 γ Interval: 5.0DEG
 Test System:EVERFINE GO-2000B_V1 SYSTEM V2.00.473
 Humidity:65.0%
 Test Distance:9.401m [K=1.0000]
 Remarks:

Planar Illuminance Curve



C Range: 0 - 360DEG
 C Interval: 22.5DEG
 Test Speed: HIGH
 Temperature: 25.3°C
 Operators: DAMIN
 Test Date: 2023-11-15

γ Range: 0 - 180DEG
 γ Interval: 5.0DEG
 Test System: EVERFINE GO-2000B_V1 SYSTEM V2.00.473
 Humidity: 65.0%
 Test Distance: 9.401m [K=1.0000]
 Remarks:

LUMINOUS DISTRIBUTION INTENSITY DATA

Test:U:220.35V I:0.0559A P:11.880W PF:0.9641 Freq:50.00Hz Lamp Flux:1397.44x1 lm		
NAME: 明装	TYPE:	WEIGHT:
SPEC.:	DIM.:	SERIAL No.:
MFR.: EVERFINE	SUR.:	Shielding Angle:

Table--1

UNIT: cd

C (DEG) \ γ (DEG)	0	22.5	45	67.5	90	112.5	135	157.5	180	202.5	225	247.5	270	292.5	315	337.5			
0	419	419	419	419	419	419	419	419	419	419	419	419	419	419	419	419			
5	417	418	417	417	417	415	417	415	417	417	417	417	418	418	418	417			
10	413	412	412	412	411	410	411	411	411	411	412	412	413	413	413	412			
15	404	404	403	403	402	402	402	401	402	403	403	404	404	405	406	405			
20	393	393	392	391	390	390	389	390	390	390	392	392	393	393	394	393			
25	379	378	377	376	375	375	374	373	375	376	377	377	379	379	379	377			
30	361	361	359	359	357	357	356	357	357	358	359	360	361	362	363	361			
35	341	341	339	339	336	338	337	337	338	337	339	340	342	341	343	341			
40	318	319	317	317	313	315	313	314	316	314	317	317	320	319	322	318			
45	294	294	292	292	289	290	288	289	291	289	292	291	295	294	297	293			
50	267	268	265	265	262	263	261	262	264	263	265	266	268	268	270	267			
55	239	239	237	237	234	235	233	234	235	233	237	237	239	239	242	239			
60	209	210	207	207	204	205	203	204	205	204	206	207	209	209	212	209			
65	178	179	176	177	173	174	172	173	174	173	176	176	178	179	181	178			
70	147	147	145	145	143	143	141	142	142	142	144	145	147	148	149	147			
75	116	116	114	114	112	112	111	111	111	111	113	114	116	117	118	116			
80	86.8	87.2	85.6	85.6	83.6	83.6	82.5	82.9	83.3	83.4	84.9	85.8	87.7	88.0	88.7	87.5			
85	63.2	63.2	62.1	62.0	61.0	60.4	59.7	59.9	60.3	60.3	61.9	62.8	64.3	64.3	64.8	63.7			
90	45.0	45.0	44.3	44.5	43.7	43.4	42.7	42.6	43.0	43.2	43.5	45.6	46.8	46.5	46.8	45.6			
95	33.0	32.9	28.9	31.5	32.0	31.1	26.1	31.3	30.7	31.9	24.5	33.6	35.0	33.6	31.3	33.6			
100	17.9	15.8	9.09	8.26	9.06	7.73	4.26	6.71	14.8	6.37	4.51	8.95	11.2	9.17	10.8	16.7			
105	9.80	3.53	2.47	13.7	12.2	14.1	2.36	2.74	1.80	3.33	3.06	15.0	13.0	15.1	2.43	3.92			
110	1.93	3.68	8.02	3.84	3.10	4.20	7.43	3.20	2.01	3.77	9.24	4.07	3.87	4.48	8.17	3.38			
115	8.54	3.41	5.88	9.70	8.82	9.67	5.27	3.46	7.89	3.22	6.82	11.0	9.73	10.7	5.92	3.74			
120	6.68	3.09	3.91	6.43	7.30	6.40	3.81	3.00	6.15	2.78	4.56	7.44	8.59	7.15	4.09	3.27			
125	4.41	3.20	2.75	4.10	4.58	4.08	2.73	3.14	4.31	3.13	3.12	4.80	5.57	4.59	2.88	3.44			
130	2.64	2.62	2.52	2.73	2.83	2.73	2.54	2.58	2.73	2.67	2.67	3.14	3.43	3.03	2.66	2.59			
135	2.71	2.74	2.65	2.66	2.66	2.69	2.69	2.72	2.90	2.83	2.81	2.71	2.69	2.68	2.81	2.79			
140	2.87	2.92	2.69	2.83	2.82	2.82	2.72	2.93	3.04	2.99	2.81	2.94	2.89	2.95	2.83	3.00			
145	3.01	2.98	2.88	2.90	2.91	2.89	2.98	3.01	3.17	3.05	2.96	3.00	3.02	2.98	3.05	3.07			
150	2.99	3.03	3.04	3.05	3.06	3.04	3.05	3.03	3.13	3.11	3.09	3.08	3.13	3.08	3.11	3.09			
155	3.16	3.18	3.19	3.23	3.23	3.24	3.21	3.17	3.26	3.24	3.27	3.24	3.27	3.28	3.24	3.22			
160	3.32	3.34	3.40	3.40	3.43	3.36	3.38	3.33	3.41	3.37	3.42	3.42	3.45	3.39	3.43	3.37			
165	3.49	3.52	3.49	3.59	3.63	3.57	3.48	3.51	3.57	3.54	3.51	3.59	3.66	3.59	3.53	3.52			
170	3.69	3.72	3.65	3.65	3.66	3.66	3.62	3.67	3.76	3.76	3.64	3.62	3.71	3.70	3.66	3.63			
175	3.84	3.86	3.78	3.75	3.70	3.70	3.73	3.75	3.87	3.81	3.74	3.69	3.71	3.73	3.77	3.76			
180	3.77	3.80	3.80	3.78	3.75	3.77	3.78	3.76	3.79	3.78	3.83	3.77	3.77	3.75	3.79	3.75			

C Range: 0 - 360DEG
 C Interval: 22.5DEG
 Test Speed: HIGH
 Temperature:25.3°C
 Operators:DAMIN
 Test Date:2023-11-15

γ Range: 0 - 180DEG
 γ Interval: 5.0DEG
 Test System:EVERFINE GO-2000B_V1 SYSTEM V2.00.473
 Humidity:65.0%
 Test Distance:9.401m [K=1.0000]
 Remarks: