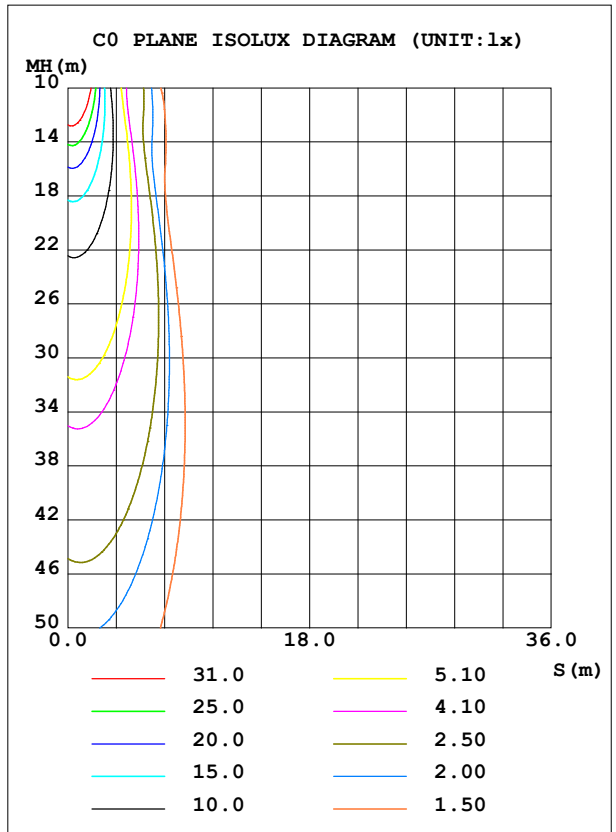
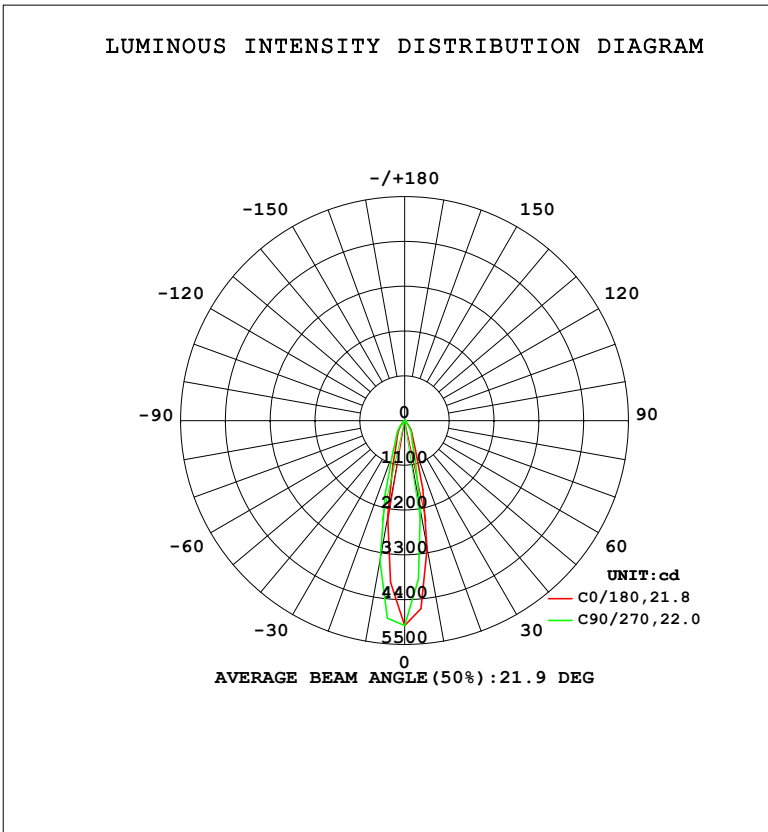


**LUMINAIRE PHOTOMETRIC TEST REPORT**

Test:U:220.34V I:0.1007A P:12.129W PF:0.5465 Freq:50.00Hz Lamp Flux:1264.9x1 lm		
NAME: 射灯	TYPE:	WEIGHT:
SPEC.:	DIM.:	SERIAL No.:
MFR.: EVERFINE	SUR.: 46.5mm	Shielding Angle:

DATA OF LAMP		PHOTOMETRIC DATA				Eff: 104.29 lm/W
MODEL	314A	I <sub>max</sub> (cd)	5034	S/MH (C0/180)	0.33	
NOMINAL POWER (W)	12	LOR (%)	100.0	S/MH (C90/270)	0.43	
RATED VOLTAGE (V)	220	TOTAL FLUX (lm)	1264.9	η UP, DN (C0-180)	0.5, 44.6	
NOMINAL FLUX (lm)	1264.9	CIE CLASS	DIRECT	η UP, DN (C180-360)	0.6, 54.3	
LAMPS INSIDE	1	η up (%)	1.1	CIBSE SHR NOM	0.00	
TEST VOLTAGE (V)	219.5	η down (%)	98.9	CIBSE SHR MAX	0.30	



C Range: 0 - 360DEG  
 C Interval: 22.5DEG  
 Test Speed: HIGH  
 Temperature: 25.3°C  
 Operators: DAMIN  
 Test Date: 2023-11-10

γ Range: 0 - 180DEG  
 γ Interval: 5.0DEG  
 Test System: EVERFINE GO-2000B\_V1 SYSTEM V2.00.473  
 Humidity: 65.0%  
 Test Distance: 9.401m [K=1.0000]  
 Remarks:

ZONAL FLUX DIAGRAM

ZONAL FLUX DIAGRAM:

$\gamma$	C0	C45	C90	C135	C180	C225	C270	C315	$\gamma$	$\Phi$ zone	$\Phi$ total	%lum,lamp
10	3199	2571	2229	2196	2401	3050	3506	3490	0- 10	369.0	369.0	29.2,29.2
20	785.3	641.1	572.3	560.8	604.9	759.7	885.3	856.9	10- 20	430.0	798.9	63.2,63.2
30	365.6	321.4	315.6	300.0	322.3	372.8	398.0	366.9	20- 30	224.9	1024	80.9,80.9
40	148.8	118.3	104.5	111.1	125.3	153.3	176.3	172.2	30- 40	149.5	1173	92.8,92.8
50	22.31	21.03	19.59	19.28	20.99	28.95	33.22	30.02	40- 50	51.88	1225	96.9,96.9
60	10.67	9.946	10.12	10.55	10.12	12.76	14.14	13.28	50- 60	15.10	1240	98.1,98.1
70	3.904	3.101	2.728	3.253	3.783	5.704	7.101	6.829	60- 70	7.832	1248	98.7,98.7
80	0.9176	0.7606	0.8270	0.9235	0.8184	1.168	1.625	1.450	70- 80	2.490	1251	98.9,98.9
90	0.0370	0.0182	0.0241	0.0182	0.0422	0.0541	0.1681	0.0841	80- 90	0.5551	1251	98.9,98.9
100	0.0301	0.0361	0.0481	0.0301	0.1087	0.0846	0.0785	0.0845	90-100	0.0562	1251	98.9,98.9
110	0.1805	0.2467	0.2948	0.2588	0.3862	0.3258	0.3076	0.3077	100-110	0.1693	1251	98.9,98.9
120	0.6020	0.7164	0.7765	0.7404	0.9472	0.8143	0.7659	0.7660	110-120	0.4981	1252	99,99
130	1.535	1.860	2.058	1.998	2.444	2.064	1.840	1.828	120-130	1.135	1253	99.1,99.1
140	3.817	4.371	4.672	4.600	5.319	4.758	4.396	4.354	130-140	2.425	1256	99.3,99.3
150	6.380	6.663	6.837	6.742	7.353	7.088	6.943	6.931	140-150	3.613	1259	99.5,99.5
160	7.280	7.219	7.285	7.057	7.243	7.272	7.489	7.441	150-160	3.321	1262	99.8,99.8
170	6.324	6.052	5.907	5.690	5.675	5.892	6.246	6.241	160-170	1.922	1264	100,100
180	5.165	5.237	5.049	5.200	5.111	5.194	5.067	5.206	170-180	0.5297	1265	100,100
DEG	LUMINOUS INTENSITY:cd									UNIT:lm		

Conical surface Flux(90deg): 1209.2 lm

%lum = 95.6%

%lamp = 95.6%

Conical surface Flux(130deg): 1245 lm

%lum = 98.4%

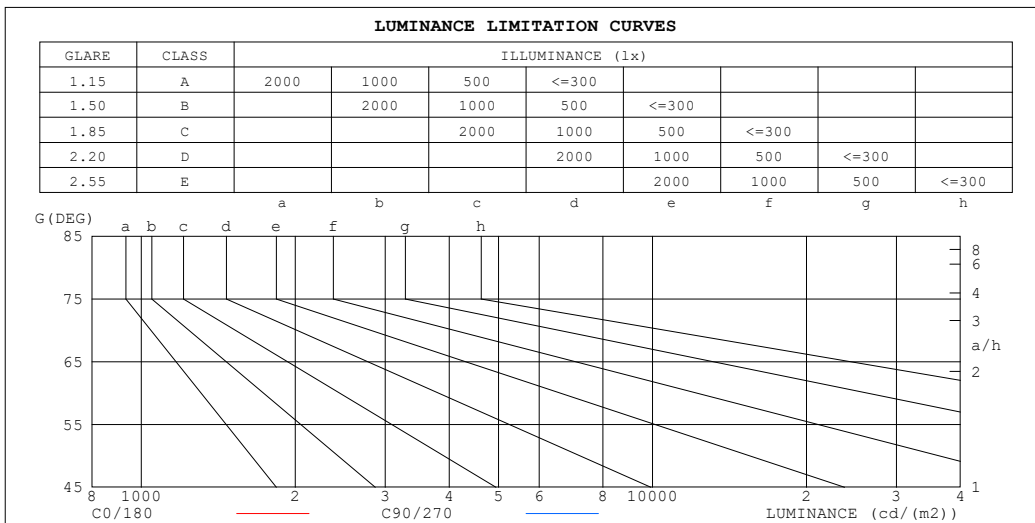
%lamp = 98.4%

C Range: 0 - 360DEG  
 C Interval: 22.5DEG  
 Test Speed: HIGH  
 Temperature:25.3°C  
 Operators:DAMIN  
 Test Date:2023-11-10

$\gamma$  Range: 0 - 180DEG  
 $\gamma$  Interval: 5.0DEG  
 Test System:EVERFINE GO-2000B\_V1 SYSTEM V2.00.473  
 Humidity:65.0%  
 Test Distance:9.401m [K=1.0000]  
 Remarks:

**LUMINANCE LIMITATION CURVES**

Test:U:220.34V I:0.1007A P:12.129W PF:0.5465 Freq:50.00Hz Lamp Flux:1264.9x1 lm		
NAME: 射灯	TYPE:	WEIGHT:
SPEC.:	DIM.:	SERIAL No.:
MFR.: EVERFINE	SUR.: 46.5mm	Shielding Angle:



LUMINANCE cd/(m2)		
G (DEG)	C0/180	C90/270
85	65	35
80	72	65
75	90	83
70	156	109
65	208	227
60	292	277
55	363	342
50	475	417
45	1027	725

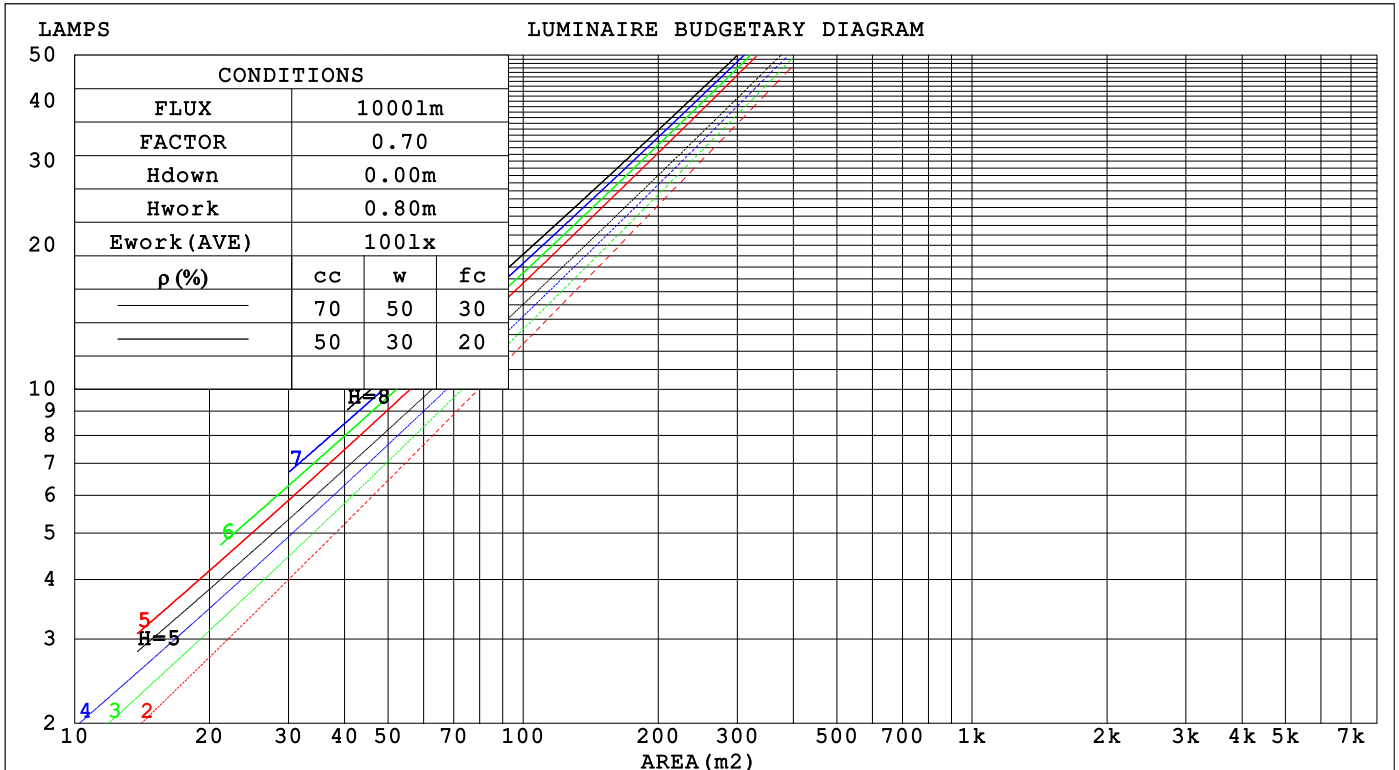
C Range: 0 - 360DEG  
 C Interval: 22.5DEG  
 Test Speed: HIGH  
 Temperature: 25.3°C  
 Operators: DAMIN  
 Test Date: 2023-11-10

γ Range: 0 - 180DEG  
 γ Interval: 5.0DEG  
 Test System: EVERFINE GO-2000B\_V1 SYSTEM V2.00.473  
 Humidity: 65.0%  
 Test Distance: 9.401m [K=1.0000]  
 Remarks:

CU AND LUMINAIRE BUDGETARY ESTIMATE DIAGRAM

Test:U:220.34V I:0.1007A P:12.129W PF:0.5465 Freq:50.00Hz Lamp Flux:1264.9x1 lm		
NAME: 射灯	TYPE:	WEIGHT:
SPEC.:	DIM.:	SERIAL No.:
MFR.: EVERFINE	SUR.: 46.5mm	Shielding Angle:

pcc	80%			70%			50%			30%			10%			0
pw	50%	30%	10%	50%	30%	10%	50%	30%	10%	50%	30%	10%	50%	30%	10%	0
pfc	20%			20%			20%			20%			20%			0
RCR	RCR:Room Cavity Ratio						Coefficients of Utilization(CU)									
0.0	1.19	1.19	1.19	1.16	1.16	1.16	1.11	1.11	1.11	1.06	1.06	1.06	1.01	1.01	1.01	.99
1.0	1.12	1.09	1.07	1.09	1.07	1.06	1.05	1.04	1.02	1.01	1.00	.99	.98	.97	.96	.94
2.0	1.05	1.02	.99	1.03	1.00	.98	1.00	.98	.95	.97	.95	.93	.94	.93	.91	.90
3.0	.90	.95	.92	.98	.94	.91	.95	.92	.90	.93	.90	.88	.91	.89	.87	.85
4.0	.95	.90	.86	.93	.89	.86	.91	.88	.85	.89	.86	.84	.87	.85	.83	.81
5.0	.90	.85	.82	.89	.85	.81	.87	.84	.81	.86	.82	.80	.84	.81	.79	.78
6.0	.86	.81	.78	.85	.81	.77	.84	.80	.77	.82	.79	.76	.81	.78	.76	.74
7.0	.83	.78	.74	.82	.77	.74	.81	.77	.74	.79	.76	.73	.78	.75	.73	.71
8.0	.79	.74	.71	.79	.74	.71	.78	.74	.71	.77	.73	.70	.76	.72	.70	.69
9.0	.76	.72	.68	.76	.71	.68	.75	.71	.68	.74	.70	.68	.73	.70	.67	.66
10.0	.74	.69	.66	.73	.69	.66	.72	.68	.66	.72	.68	.65	.71	.68	.65	.64



C Range: 0 - 360DEG  
 C Interval: 22.5DEG  
 Test Speed: HIGH  
 Temperature:25.3°C  
 Operators:DAMIN  
 Test Date:2023-11-10

γ Range: 0 - 180DEG  
 γ Interval: 5.0DEG  
 Test System:EVERFINE GO-2000B\_V1 SYSTEM V2.00.473  
 Humidity:65.0%  
 Test Distance:9.401m [K=1.0000]  
 Remarks:

WEC AND CCEC

Test:U:220.34V I:0.1007A P:12.129W PF:0.5465 Freq:50.00Hz		
Lamp Flux:1264.9x1 lm		
NAME: 射灯	TYPE:	WEIGHT:
SPEC.:	DIM.:	SERIAL No.:
MFR.: EVERFINE	SUR.: 46.5mm	Shielding Angle:

$\rho_{CC}$	80%			70%			50%			30%			10%			0
$\rho_w$	50%	30%	10%	50%	30%	10%	50%	30%	10%	50%	30%	10%	50%	30%	10%	0
$\rho_{fc}$	20%			20%			20%			20%			20%			0
RCR	RCR:Room Cavity Ratio						Wall Exitance Coefficients(WEC)									
0.0																
1.0	.156	.089	.028	.149	.085	.027	.136	.078	.025	.124	.072	.023	.113	.066	.021	
2.0	.147	.081	.025	.141	.078	.024	.130	.073	.023	.120	.068	.021	.111	.063	.020	
3.0	.139	.074	.022	.134	.072	.022	.124	.067	.020	.116	.063	.019	.108	.060	.018	
4.0	.131	.068	.020	.126	.066	.020	.118	.063	.019	.111	.060	.018	.104	.057	.017	
5.0	.124	.063	.018	.120	.062	.018	.113	.059	.017	.107	.056	.017	.101	.054	.016	
6.0	.117	.059	.017	.114	.058	.017	.108	.055	.016	.102	.053	.016	.097	.051	.015	
7.0	.111	.055	.016	.108	.054	.015	.103	.052	.015	.098	.050	.015	.094	.049	.014	
8.0	.106	.052	.015	.104	.051	.014	.099	.049	.014	.094	.048	.014	.090	.046	.013	
9.0	.101	.049	.014	.099	.048	.014	.095	.047	.013	.091	.046	.013	.087	.044	.013	
10.0	.097	.046	.013	.095	.046	.013	.091	.045	.013	.087	.043	.012	.084	.042	.012	

$\rho_{CC}$	80%			70%			50%			30%			10%			0
$\rho_w$	50%	30%	10%	50%	30%	10%	50%	30%	10%	50%	30%	10%	50%	30%	10%	0
$\rho_{fc}$	20%			20%			20%			20%			20%			0
RCR	RCR:Room Cavity Ratio						Ceiling Cavity Exitance Coefficients(CCEC)									
0.0	.199	.199	.199	.170	.170	.170	.116	.116	.116	.067	.067	.067	.021	.021	.021	
1.0	.178	.166	.155	.152	.142	.133	.104	.098	.092	.060	.057	.054	.019	.018	.017	
2.0	.161	.141	.124	.138	.121	.107	.095	.084	.075	.055	.049	.044	.018	.016	.014	
3.0	.148	.122	.101	.127	.105	.088	.087	.073	.062	.050	.043	.036	.016	.014	.012	
4.0	.136	.107	.084	.117	.092	.073	.080	.064	.052	.046	.038	.031	.015	.012	.010	
5.0	.126	.095	.072	.109	.082	.062	.075	.057	.044	.043	.034	.026	.014	.011	.009	
6.0	.118	.085	.062	.101	.074	.054	.070	.052	.038	.041	.030	.023	.013	.010	.007	
7.0	.111	.077	.054	.095	.067	.047	.066	.047	.033	.038	.028	.020	.012	.009	.007	
8.0	.105	.071	.047	.090	.061	.041	.062	.043	.029	.036	.025	.017	.012	.008	.006	
9.0	.099	.065	.042	.085	.057	.037	.059	.040	.026	.034	.024	.016	.011	.008	.005	
10.0	.094	.061	.038	.081	.053	.033	.056	.037	.024	.033	.022	.014	.011	.007	.005	

C Range: 0 - 360DEG  
 C Interval: 22.5DEG  
 Test Speed: HIGH  
 Temperature:25.3°C  
 Operators:DAMIN  
 Test Date:2023-11-10

$\gamma$  Range: 0 - 180DEG  
 $\gamma$  Interval: 5.0DEG  
 Test System:EVERFINE GO-2000B\_V1 SYSTEM V2.00.473  
 Humidity:65.0%  
 Test Distance:9.401m [K=1.0000]  
 Remarks:

**UGR(Unified Glare Rating) Table**

Test:U:220.34V I:0.1007A P:12.129W PF:0.5465 Freq:50.00Hz										
Lamp Flux:1264.9x1 lm										
NAME: 射灯			TYPE:				WEIGHT:			
SPEC.:			DIM.:				SERIAL No.:			
MFR.: EVERFINE			SUR.: 46.5mm				Shielding Angle:			
ceiling/cavity	0.7	0.7	0.5	0.5	0.3	0.7	0.7	0.5	0.5	0.3
walls	0.5	0.3	0.5	0.3	0.3	0.5	0.3	0.5	0.3	0.3
working plane	0.2	0.2	0.2	0.2	0.2	0.2	0.2	0.2	0.2	0.2
Room dimensions	Viewed crosswise					Viewed endwise				
x = 2H y = 2H	5.3	6.1	5.6	6.3	6.4	4.5	5.2	4.7	5.4	5.6
3H	5.2	6.0	5.5	6.2	6.4	4.4	5.1	4.6	5.3	5.5
4H	5.2	5.9	5.5	6.1	6.3	4.3	5.0	4.6	5.2	5.4
6H	5.1	5.7	5.4	6.0	6.2	4.2	4.9	4.5	5.1	5.4
8H	5.1	5.7	5.4	5.9	6.2	4.2	4.8	4.5	5.1	5.3
12H	5.0	5.6	5.3	5.9	6.2	4.1	4.7	4.5	5.0	5.3
4H 2H	5.2	5.8	5.4	6.1	6.3	4.3	5.0	4.6	5.2	5.5
3H	5.1	5.7	5.4	5.9	6.2	4.2	4.8	4.6	5.1	5.4
4H	5.0	5.5	5.4	5.8	6.2	4.2	4.7	4.5	5.0	5.3
6H	4.9	5.4	5.3	5.7	6.1	4.1	4.6	4.5	4.9	5.3
8H	4.9	5.3	5.3	5.7	6.1	4.0	4.5	4.4	4.8	5.2
12H	4.8	5.2	5.2	5.6	6.0	4.0	4.4	4.4	4.8	5.2
8H 4H	4.9	5.3	5.3	5.7	6.1	4.0	4.5	4.4	4.8	5.2
6H	4.8	5.1	5.2	5.5	6.0	3.9	4.3	4.4	4.7	5.1
8H	4.7	5.0	5.2	5.5	5.9	3.9	4.2	4.3	4.6	5.1
12H	4.7	4.9	5.2	5.4	5.9	3.8	4.1	4.3	4.6	5.0
12H 4H	4.8	5.2	5.2	5.6	6.0	4.0	4.4	4.4	4.8	5.2
6H	4.7	5.0	5.2	5.5	5.9	3.9	4.2	4.3	4.6	5.1
8H	4.7	4.9	5.1	5.4	5.9	3.8	4.1	4.3	4.6	5.0
Variations with the observer position at spacings(CIE Pub.117):										
S = 1.0H	+ 3.6 / - 6.5					+ 2.7 / - 5.5				
1.5H	+ 6.0 / - 5.7					+ 4.9 / - 4.6				
2.0H	+ 5.7 / - 2.9					+ 3.5 / - 1.5				

CIE Pub.117, 1265 lm Total Lamp Luminous Flux Correct (8log(F/F0) = 0.8)  
 Area: 0.073 m2

C Range: 0 - 360DEG  
 C Interval: 22.5DEG  
 Test Speed: HIGH  
 Temperature:25.3°C  
 Operators:DAMIN  
 Test Date:2023-11-10

γ Range: 0 - 180DEG  
 γ Interval: 5.0DEG  
 Test System:EVERFINE GO-2000B\_V1 SYSTEM V2.00.473  
 Humidity:65.0%  
 Test Distance:9.401m [K=1.0000]  
 Remarks:

**UTILIZATION FACTORS TABLE**

Test:U:220.34V I:0.1007A P:12.129W PF:0.5465 Freq:50.00Hz Lamp Flux:1264.9x1 lm		
NAME: 射灯	TYPE:	WEIGHT:
SPEC.:	DIM.:	SERIAL No.:
MFR.: EVERFINE	SUR.: 46.5mm	Shielding Angle:

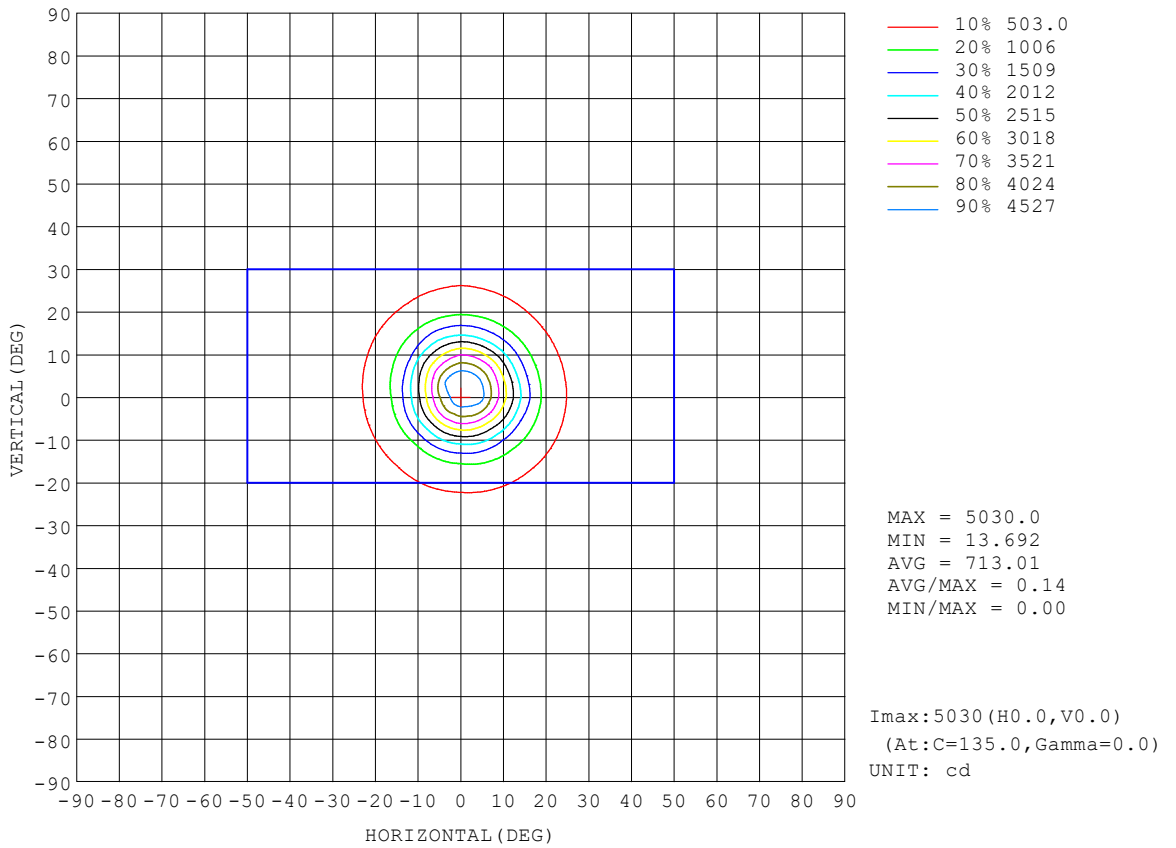
REFLECTANCE										
Ceiling	0.8	0.8	0.8	0.7	0.7	0.7	0.5	0.5	0.5	0
Walls	0.7	0.5	0.3	0.7	0.5	0.3	0.7	0.5	0.3	0
Working plane	0.2	0.2	0.2	0.2	0.2	0.2	0.2	0.2	0.2	0
ROOM INDEX	UTILIZATION FACTORS (PERCENT) $k(RI) \times RCR = 5$									
k = 0.60	87	81	77	86	81	77	86	80	77	73
0.80	94	89	85	94	88	85	92	88	84	81
1.00	99	93	90	98	93	89	96	93	89	85
1.25	103	98	94	102	97	94	100	96	93	89
1.50	106	101	98	104	100	97	102	98	96	91
2.00	108	104	101	107	103	100	104	101	98	93
2.50	110	106	103	108	105	102	105	102	100	94
3.00	111	108	105	110	107	104	106	104	102	95
4.00	114	111	109	111	109	107	108	106	104	97
5.00	115	113	111	113	111	109	108	107	106	98
ROOM INDEX	UF(total)									Direct
According to DIN EN 13032-2 2004			Suspended				SHRNOM = 1.25			

C Range: 0 - 360DEG  
 C Interval: 22.5DEG  
 Test Speed: HIGH  
 Temperature:25.3°C  
 Operators:DAMIN  
 Test Date:2023-11-10

$\gamma$  Range: 0 - 180DEG  
 $\gamma$  Interval: 5.0DEG  
 Test System:EVERFINE GO-2000B\_V1 SYSTEM V2.00.473  
 Humidity:65.0%  
 Test Distance:9.401m [K=1.0000]  
 Remarks:

**ISOCANDELA DIAGRAM**

Test:U:220.34V I:0.1007A P:12.129W PF:0.5465 Freq:50.00Hz Lamp Flux:1264.9x1 lm		
NAME: 射灯	TYPE:	WEIGHT:
SPEC.:	DIM.:	SERIAL No.:
MFR.: EVERFINE	SUR.: 46.5mm	Shielding Angle:



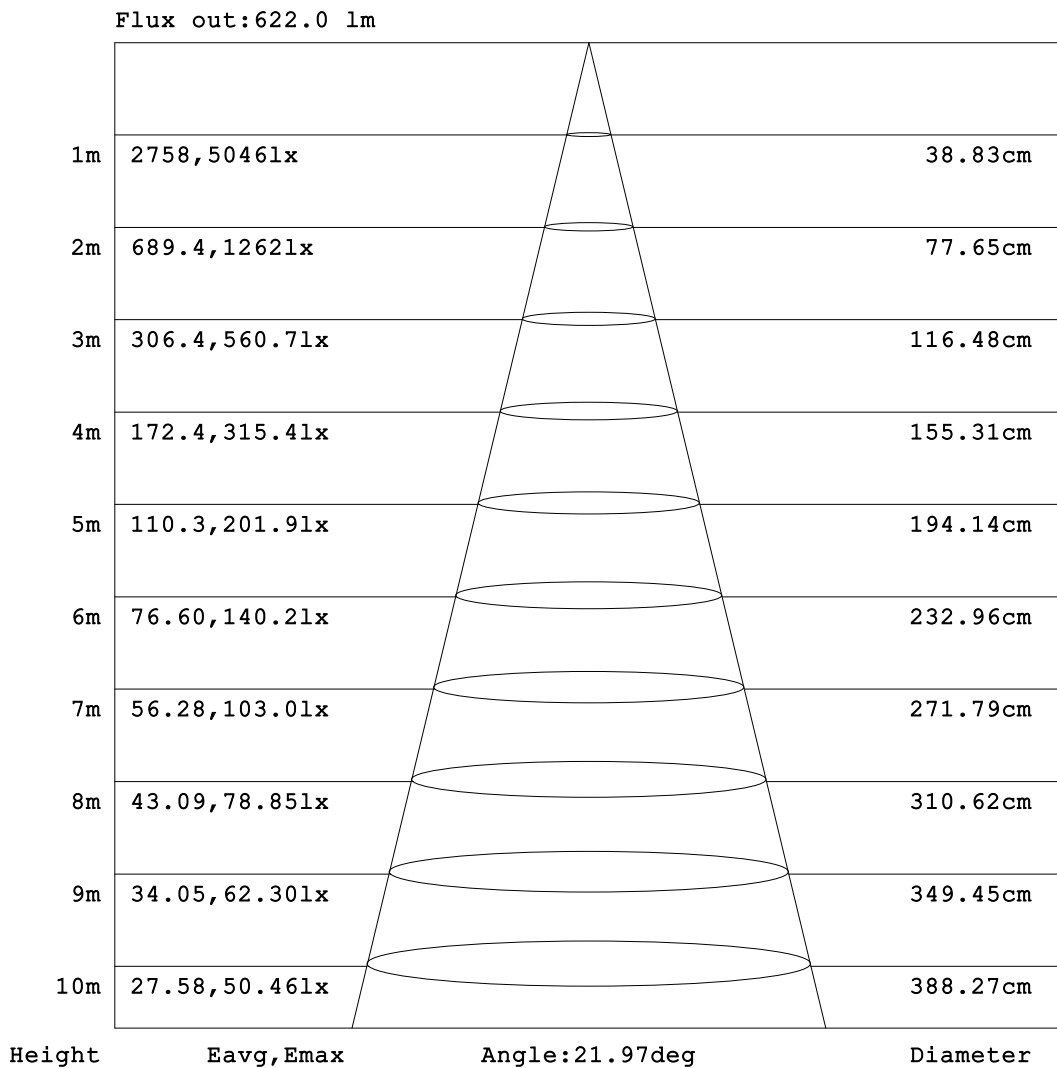
C Range: 0 - 360DEG  
 C Interval: 22.5DEG  
 Test Speed: HIGH  
 Temperature:25.3°C  
 Operators:DAMIN  
 Test Date:2023-11-10

γ Range: 0 - 180DEG  
 γ Interval: 5.0DEG  
 Test System:EVERFINE GO-2000B\_V1 SYSTEM V2.00.473  
 Humidity:65.0%  
 Test Distance:9.401m [K=1.0000]  
 Remarks:



**AAI Figure**

Test:U:220.34V I:0.1007A P:12.129W PF:0.5465 Freq:50.00Hz Lamp Flux:1264.9x1 lm		
NAME: 射灯	TYPE:	WEIGHT:
SPEC.:	DIM.:	SERIAL No.:
MFR.: EVERFINE	SUR.: 46.5mm	Shielding Angle:



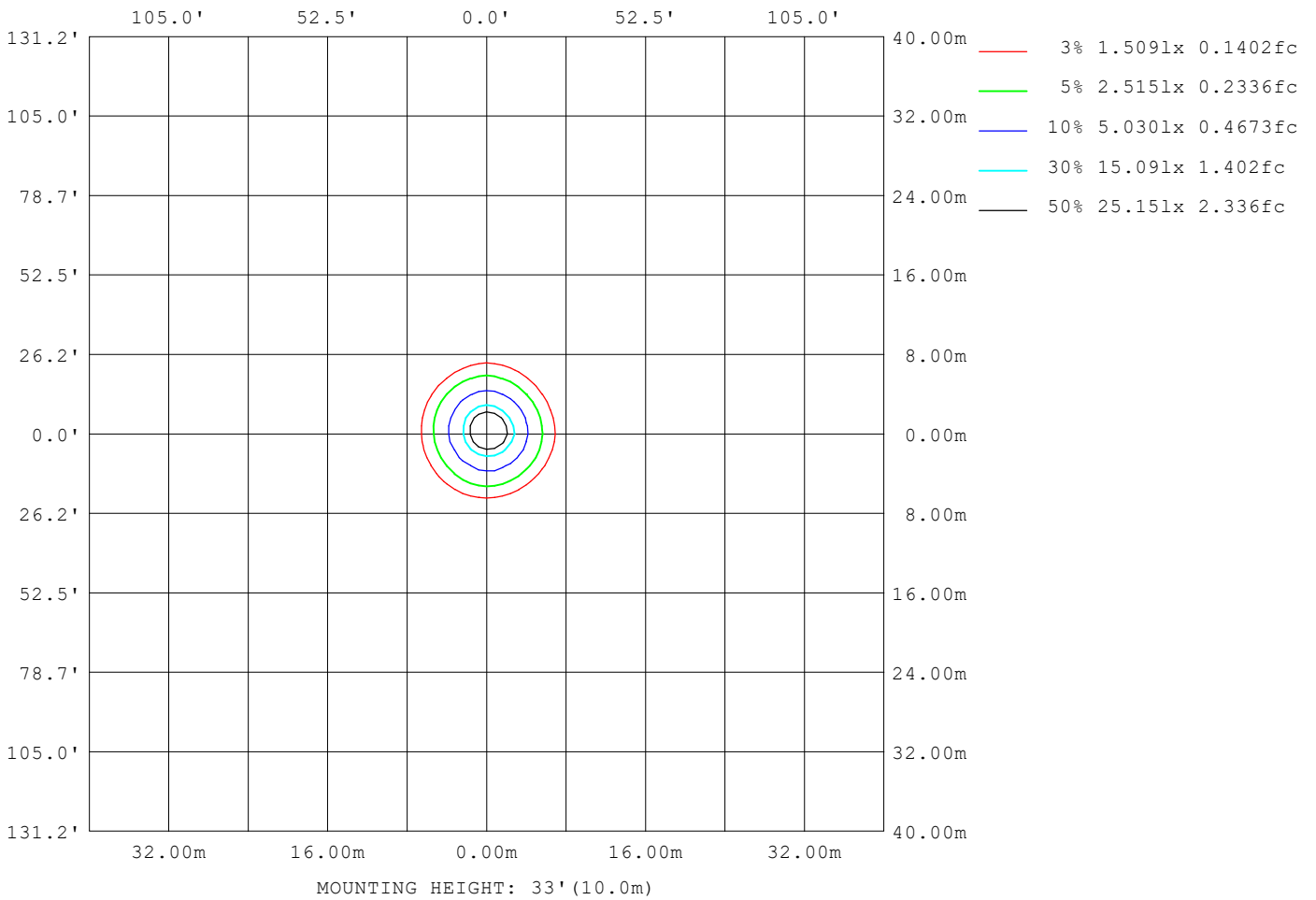
Note:The Curves indicate the illuminated area and the average illumination when the luminaire is at different distance.

C Range: 0 - 360DEG  
 C Interval: 22.5DEG  
 Test Speed: HIGH  
 Temperature:25.3°C  
 Operators:DAMIN  
 Test Date:2023-11-10

γ Range: 0 - 180DEG  
 γ Interval: 5.0DEG  
 Test System:EVERFINE GO-2000B\_V1 SYSTEM V2.00.473  
 Humidity:65.0%  
 Test Distance:9.401m [K=1.0000]  
 Remarks:

**ISOLUX DIAGRAM**

Test:U:220.34V I:0.1007A P:12.129W PF:0.5465 Freq:50.00Hz Lamp Flux:1264.9x1 lm		
NAME: 射灯	TYPE:	WEIGHT:
SPEC.:	DIM.:	SERIAL No.:
MFR.: EVERFINE	SUR.: 46.5mm	Shielding Angle:



C Range: 0 - 360DEG  
C Interval: 22.5DEG  
Test Speed: HIGH  
Temperature:25.3°C  
Operators:DAMIN  
Test Date:2023-11-10

γ Range: 0 - 180DEG  
γ Interval: 5.0DEG  
Test System:EVERFINE GO-2000B\_V1 SYSTEM V2.00.473  
Humidity:65.0%  
Test Distance:9.401m [K=1.0000]  
Remarks:

**LED Avg.L Report**

Test:U:220.34V I:0.1007A P:12.129W PF:0.5465 Freq:50.00Hz Lamp Flux:1264.9x1 lm		
NAME: 射灯	TYPE:	WEIGHT:
SPEC.:	DIM.:	SERIAL No.:
MFR.: EVERFINE	SUR.: 46.5mm	Shielding Angle:

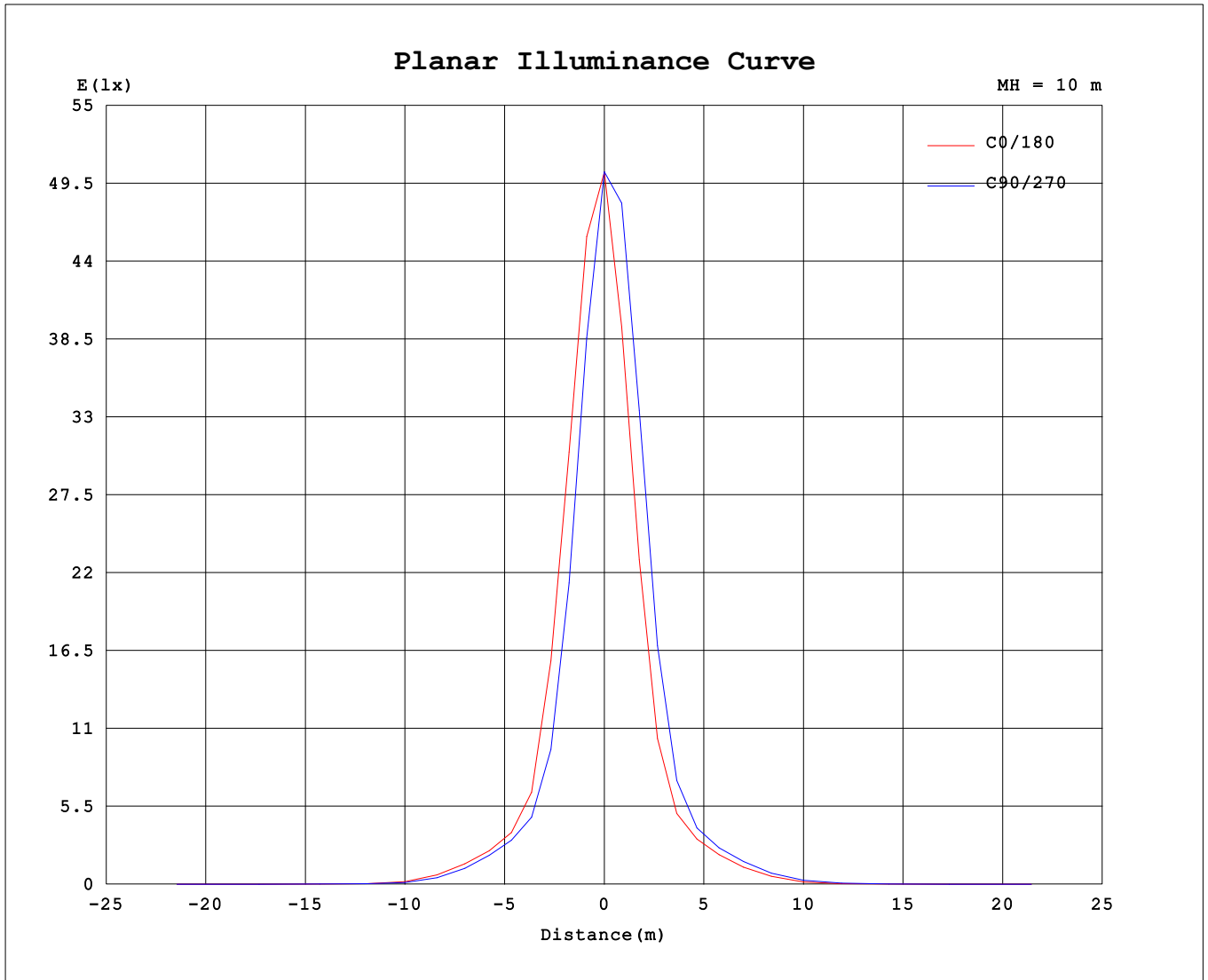
AvgL	cd/m2
L_0~180 (65) av	206
L_0~180 (75) av	88
L_0~180 (85) av	58
L_90~270 (65) av	279
L_90~270 (75) av	115
L_90~270 (85) av	81
L_45 (65) av	264
L_45 (75) av	102
L_45 (85) av	71

Standard: GB/T 29293-2012

C Range: 0 - 360DEG  
 C Interval: 22.5DEG  
 Test Speed: HIGH  
 Temperature:25.3°C  
 Operators:DAMIN  
 Test Date:2023-11-10

γ Range: 0 - 180DEG  
 γ Interval: 5.0DEG  
 Test System:EVERFINE GO-2000B\_V1 SYSTEM V2.00.473  
 Humidity:65.0%  
 Test Distance:9.401m [K=1.0000]  
 Remarks:

**Planar Illuminance Curve**



C Range: 0 - 360DEG  
 C Interval: 22.5DEG  
 Test Speed: HIGH  
 Temperature: 25.3°C  
 Operators: DAMIN  
 Test Date: 2023-11-10

γ Range: 0 - 180DEG  
 γ Interval: 5.0DEG  
 Test System: EVERFINE GO-2000B\_V1 SYSTEM V2.00.473  
 Humidity: 65.0%  
 Test Distance: 9.401m [K=1.0000]  
 Remarks:

LUMINOUS DISTRIBUTION INTENSITY DATA

Test:U:220.34V I:0.1007A P:12.129W PF:0.5465 Freq:50.00Hz Lamp Flux:1264.9x1 lm		
NAME: 射灯	TYPE:	WEIGHT:
SPEC.:	DIM.:	SERIAL No.:
MFR.: EVERFINE	SUR.: 46.5mm	Shielding Angle:

Table--1

UNIT: cd

C (DEG) \ γ (DEG)	0	22.5	45	67.5	90	112.5	135	157.5	180	202.5	225	247.5	270	292.5	315	337.5			
0	5034	5034	5034	5034	5034	5034	5034	5034	5034	5034	5034	5034	5034	5034	5034	5034			
5	4630	4440	4181	3948	3907	3819	3898	3910	3986	4281	4568	4722	4869	4867	4857	4726			
10	3199	2926	2571	2390	2229	2209	2196	2309	2401	2662	3050	3268	3506	3503	3490	3321			
15	1755	1494	1266	1153	1058	1037	1028	1086	1143	1313	1574	1811	1873	1845	1845	1744			
20	785	711	641	602	572	568	561	580	605	659	760	833	885	879	857	821			
25	491	467	440	427	419	412	400	408	429	456	489	515	536	520	503	494			
30	366	348	321	313	316	308	300	303	322	347	373	387	398	382	367	359			
35	265	239	219	209	208	212	215	218	222	239	255	271	293	277	264	257			
40	149	126	118	110	104	108	111	120	125	132	153	164	176	180	172	161			
45	53.1	43.6	44.7	40.2	37.4	37.6	39.9	44.8	48.0	42.3	68.2	75.6	83.4	81.7	76.8	67.7			
50	22.3	20.3	21.0	20.4	19.6	19.1	19.3	20.3	21.0	20.6	28.9	32.2	33.2	31.7	30.0	26.7			
55	15.2	14.2	14.8	14.8	14.3	14.2	14.4	14.9	14.8	14.7	18.7	19.6	19.1	18.3	17.8	16.9			
60	10.7	9.92	9.95	10.3	10.1	10.3	10.6	10.9	10.1	10.4	12.8	14.0	14.1	13.6	13.3	12.3			
65	6.43	5.63	6.86	7.04	7.00	7.24	7.58	7.82	6.29	6.63	8.36	9.79	10.2	10.1	9.79	8.90			
70	3.90	3.17	3.10	2.90	2.73	2.94	3.25	4.01	3.78	3.55	5.70	6.66	7.10	7.10	6.83	5.88			
75	1.71	1.51	1.44	1.52	1.57	1.59	1.71	1.65	1.61	1.82	2.14	2.59	2.76	2.66	2.44	2.06			
80	0.92	0.77	0.76	0.77	0.83	0.80	0.92	0.86	0.82	1.01	1.17	1.56	1.62	1.61	1.45	1.16			
85	0.42	0.32	0.27	0.19	0.22	0.20	0.30	0.28	0.32	0.50	0.55	0.79	0.81	0.82	0.69	0.56			
90	0.04	0.04	0.02	0.03	0.02	0.02	0.02	0.03	0.04	0.09	0.05	0.19	0.17	0.19	0.08	0.07			
95	0.03	0.04	0.02	0.05	0.02	0.05	0.02	0.04	0.05	0.05	0.04	0.03	0.04	0.03	0.04	0.04			
100	0.03	0.07	0.04	0.10	0.05	0.10	0.03	0.09	0.11	0.04	0.08	0.03	0.08	0.03	0.08	0.04			
105	0.07	0.14	0.11	0.19	0.14	0.20	0.12	0.17	0.22	0.13	0.19	0.11	0.17	0.10	0.18	0.11			
110	0.18	0.28	0.25	0.33	0.29	0.34	0.26	0.30	0.39	0.29	0.33	0.25	0.31	0.24	0.31	0.25			
115	0.35	0.46	0.44	0.54	0.49	0.54	0.45	0.48	0.62	0.51	0.52	0.44	0.51	0.43	0.50	0.45			
120	0.60	0.71	0.72	0.82	0.78	0.82	0.74	0.76	0.95	0.83	0.81	0.72	0.77	0.69	0.77	0.72			
125	0.94	1.08	1.14	1.26	1.26	1.29	1.20	1.19	1.51	1.33	1.27	1.14	1.16	1.08	1.15	1.13			
130	1.54	1.73	1.86	2.01	2.06	2.09	2.00	1.94	2.44	2.21	2.06	1.87	1.84	1.76	1.83	1.83			
135	2.49	2.74	2.97	3.16	3.24	3.27	3.18	3.06	3.80	3.51	3.26	3.03	2.94	2.85	2.91	2.96			
140	3.82	4.10	4.37	4.56	4.67	4.68	4.60	4.46	5.32	5.03	4.76	4.50	4.40	4.30	4.35	4.43			
145	5.24	5.50	5.70	5.86	5.94	5.95	5.88	5.78	6.60	6.35	6.15	5.92	5.85	5.74	5.82	5.88			
150	6.38	6.58	6.66	6.80	6.84	6.83	6.74	6.73	7.35	7.18	7.09	6.91	6.94	6.84	6.93	6.94			
155	7.06	7.18	7.13	7.23	7.26	7.20	7.10	7.10	7.50	7.43	7.41	7.38	7.50	7.40	7.48	7.44			
160	7.28	7.24	7.22	7.17	7.28	7.10	7.06	6.98	7.24	7.26	7.27	7.42	7.49	7.49	7.44	7.50			
165	7.08	6.91	6.79	6.77	6.80	6.60	6.49	6.41	6.60	6.62	6.70	7.00	7.13	7.16	7.00	7.05			
170	6.32	6.17	6.05	5.93	5.91	5.70	5.69	5.65	5.68	5.81	5.89	6.09	6.25	6.31	6.24	6.28			
175	5.55	5.45	5.47	5.27	5.19	5.07	5.21	5.09	5.04	5.19	5.27	5.32	5.34	5.52	5.57	5.56			
180	5.16	5.13	5.24	5.06	5.05	5.04	5.20	5.13	5.11	5.08	5.19	5.06	5.07	5.10	5.21	5.15			

C Range: 0 - 360DEG  
 C Interval: 22.5DEG  
 Test Speed: HIGH  
 Temperature:25.3℃  
 Operators:DAMIN  
 Test Date:2023-11-10

γ Range: 0 - 180DEG  
 γ Interval: 5.0DEG  
 Test System:EVERFINE GO-2000B\_V1 SYSTEM V2.00.473  
 Humidity:65.0%  
 Test Distance:9.401m [K=1.0000]  
 Remarks: