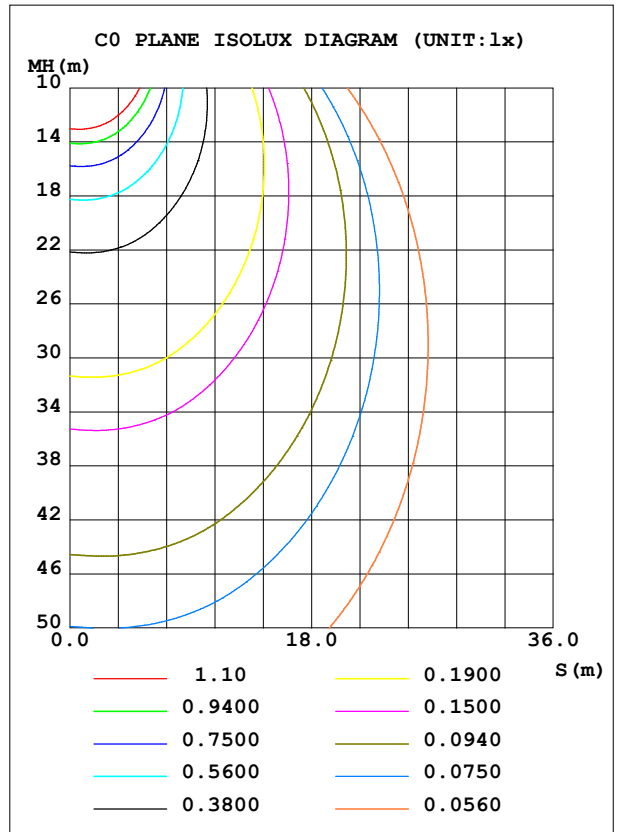
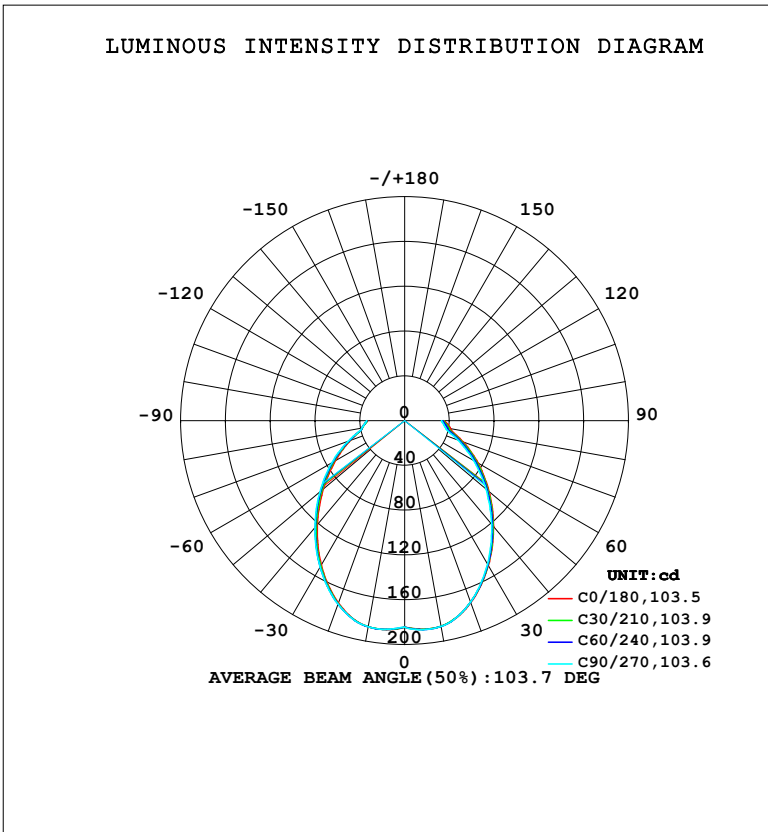


**LUMINAIRE PHOTOMETRIC TEST REPORT**

Test:U:220.34V I:0.0753A P:9.6192W PF:0.5801 Freq:50.00Hz Lamp Flux:538.959x1 lm		
NAME:	TYPE: 筒灯	WEIGHT:
SPEC.:	DIM.:	SERIAL No.:
MFR.: EVERFINE	SUR.: 80mm	Shielding Angle:

DATA OF LAMP		PHOTOMETRIC DATA				Eff: 56.03 lm/W
MODEL	226H	I <sub>max</sub> (cd)	187.8	S/MH (C0/180)	1.20	
NOMINAL POWER (W)	10	LOR (%)	100.0	S/MH (C90/270)	1.22	
RATED VOLTAGE (V)	220	TOTAL FLUX (lm)	538.96	η UP, DN (C0-180)	0.0, 49.5	
NOMINAL FLUX (lm)	538.959	CIE CLASS	DIRECT	η UP, DN (C180-360)	0.0, 50.5	
LAMPS INSIDE	1	η up (%)	0.0	CIBSE SHR NOM	1.25	
TEST VOLTAGE (V)	219.5	η down (%)	100.0	CIBSE SHR MAX	1.35	



C Range: 0 - 360DEG  
 C Interval: 15.0DEG  
 Test Speed: HIGH  
 Temperature: 25.3°C  
 Operators: DAMIN  
 Test Date: 2023-12-14

γ Range: 0 - 90DEG  
 γ Interval: 1.0DEG  
 Test System: EVERFINE GO-2000B\_V1 SYSTEM V2.00.473  
 Humidity: 65.0%  
 Test Distance: 9.401m [K=1.0000]  
 Remarks:

ZONAL FLUX DIAGRAM

ZONAL FLUX DIAGRAM:

$\gamma$	C0	C45	C90	C135	C180	C225	C270	C315	$\gamma$	$\Phi$ zone	$\Phi$ total	%lum, lamp
10	186.6	186.6	186.6	186.9	186.9	187.0	187.0	187.0	0- 10	17.86	17.86	3.31,3.31
20	172.8	172.8	172.3	172.9	173.3	173.8	174.4	174.0	10- 20	51.22	69.08	12.8,12.8
30	149.6	149.3	148.1	148.5	149.0	150.2	151.2	151.0	20- 30	74.61	143.7	26.7,26.7
40	123.6	122.8	120.9	120.8	121.4	123.3	124.7	125.2	30- 40	85.28	229.0	42.5,42.5
50	98.44	97.19	94.76	94.27	94.80	97.05	98.80	100.0	40- 50	84.69	313.7	58.2,58.2
60	75.61	74.02	71.19	70.64	71.37	73.31	75.09	76.74	50- 60	76.07	389.7	72.3,72.3
70	55.47	53.48	50.58	50.20	51.63	52.46	53.59	55.47	60- 70	62.37	452.1	83.9,83.9
80	41.70	39.58	37.20	36.92	39.05	38.57	38.88	40.74	70- 80	47.21	499.3	92.6,92.6
90	35.21	34.63	33.05	32.36	32.94	33.17	34.07	35.27	80- 90	39.65	539.0	100,100
100									90-100			
110									100-110			
120									110-120			
130									120-130			
140									130-140			
150									140-150			
160									150-160			
170									160-170			
180									170-180			
DEG	LUMINOUS INTENSITY:cd									UNIT:lm		

Conical surface Flux(90deg): 271.97 lm

%lum = 50.5%

%lamp = 50.5%

Conical surface Flux(130deg): 422.84 lm

%lum = 78.5%

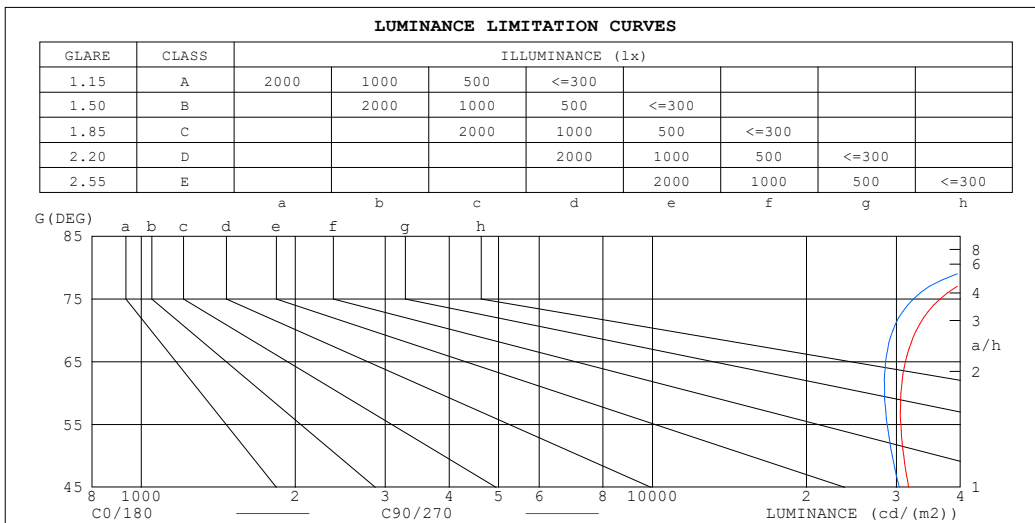
%lamp = 78.5%

C Range: 0 - 360DEG  
 C Interval: 15.0DEG  
 Test Speed: HIGH  
 Temperature:25.3°C  
 Operators:DAMIN  
 Test Date:2023-12-14

$\gamma$  Range: 0 - 90DEG  
 $\gamma$  Interval: 1.0DEG  
 Test System:EVERFINE GO-2000B\_V1 SYSTEM V2.00.473  
 Humidity:65.0%  
 Test Distance:9.401m [K=1.0000]  
 Remarks:

**LUMINANCE LIMITATION CURVES**

Test:U:220.34V I:0.0753A P:9.6192W PF:0.5801 Freq:50.00Hz Lamp Flux:538.959x1 lm		
NAME:	TYPE: 筒灯	WEIGHT:
SPEC.:	DIM.:	SERIAL No.:
MFR.: EVERFINE	SUR.: 80mm	Shielding Angle:



LUMINANCE cd/(m2)		
G (DEG)	C0/180	C90/270
85	89531	79727
80	48595	42776
75	36523	32381
70	32825	29532
65	31240	28565
60	30605	28433
55	30596	28768
50	30992	29441
45	31705	30377

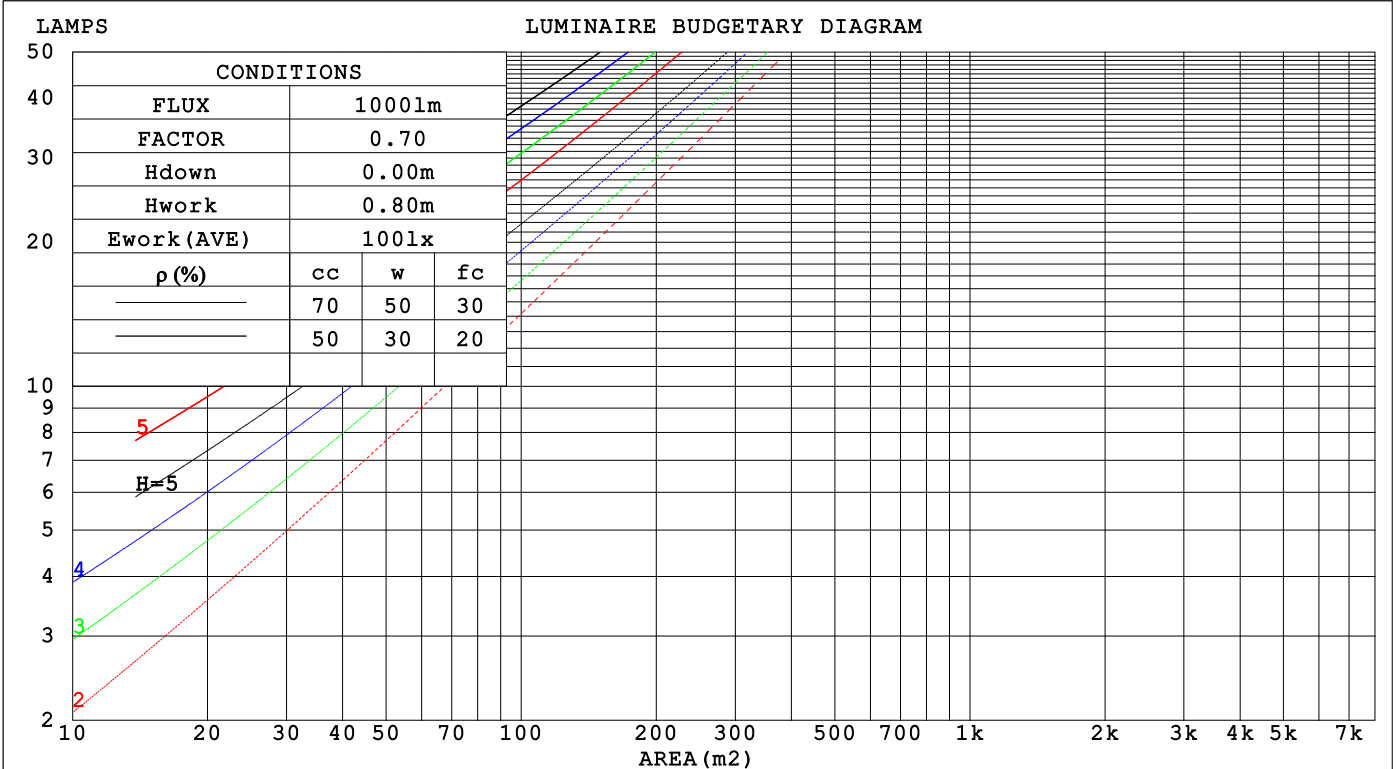
C Range: 0 - 360DEG  
 C Interval: 15.0DEG  
 Test Speed: HIGH  
 Temperature:25.3°C  
 Operators:DAMIN  
 Test Date:2023-12-14

γ Range: 0 - 90DEG  
 γ Interval: 1.0DEG  
 Test System:EVERFINE GO-2000B\_V1 SYSTEM V2.00.473  
 Humidity:65.0%  
 Test Distance:9.401m [K=1.0000]  
 Remarks:

**CU AND LUMINAIRE BUDGETARY ESTIMATE DIAGRAM**

Test:U:220.34V I:0.0753A P:9.6192W PF:0.5801 Freq:50.00Hz Lamp Flux:538.959x1 lm		
NAME:	TYPE: 筒灯	WEIGHT:
SPEC.:	DIM.:	SERIAL No.:
MFR.: EVERFINE	SUR.: 80mm	Shielding Angle:

$\rho_{cc}$	80%			70%			50%			30%			10%			0
$\rho_w$	50%	30%	10%	50%	30%	10%	50%	30%	10%	50%	30%	10%	50%	30%	10%	0
$\rho_{fc}$	20%			20%			20%			20%			20%			0
RCR	RCR:Room Cavity Ratio			Coefficients of Utilization(CU)												
0.0	1.19	1.19	1.19	1.16	1.16	1.16	1.11	1.11	1.11	1.06	1.06	1.06	1.02	1.02	1.02	1.00
1.0	1.01	.96	.91	.98	.94	.89	.94	.90	.86	.90	.87	.84	.86	.84	.81	.79
2.0	.87	.80	.73	.85	.78	.72	.82	.76	.70	.78	.73	.69	.75	.71	.67	.65
3.0	.76	.68	.61	.75	.67	.60	.72	.65	.59	.69	.63	.58	.66	.61	.57	.54
4.0	.68	.58	.51	.66	.58	.51	.64	.56	.50	.61	.55	.49	.59	.53	.49	.47
5.0	.61	.51	.44	.59	.51	.44	.57	.49	.44	.55	.48	.43	.53	.47	.43	.40
6.0	.55	.45	.39	.54	.45	.39	.52	.44	.38	.50	.43	.38	.48	.42	.37	.35
7.0	.50	.41	.34	.49	.40	.34	.47	.40	.34	.46	.39	.34	.44	.38	.33	.31
8.0	.45	.37	.31	.45	.36	.31	.43	.36	.30	.42	.35	.30	.41	.35	.30	.28
9.0	.42	.33	.28	.41	.33	.28	.40	.33	.27	.39	.32	.27	.38	.32	.27	.25
10.0	.39	.31	.25	.38	.30	.25	.37	.30	.25	.36	.30	.25	.35	.29	.25	.23



C Range: 0 - 360DEG  
 C Interval: 15.0DEG  
 Test Speed: HIGH  
 Temperature:25.3°C  
 Operators:DAMIN  
 Test Date:2023-12-14

$\gamma$  Range: 0 - 90DEG  
 $\gamma$  Interval: 1.0DEG  
 Test System:EVERFINE GO-2000B\_V1 SYSTEM V2.00.473  
 Humidity:65.0%  
 Test Distance:9.401m [K=1.0000]  
 Remarks:

WEC AND CCEC

Test:U:220.34V I:0.0753A P:9.6192W PF:0.5801 Freq:50.00Hz								
Lamp Flux:538.959x1 lm								
NAME:			TYPE: 筒灯			WEIGHT:		
SPEC.:			DIM.:			SERIAL No.:		
MFR.: EVERFINE			SUR.: 80mm			Shielding Angle:		

ρ <sub>CC</sub>	80%			70%			50%			30%			10%			0
ρ <sub>w</sub>	50%	30%	10%	50%	30%	10%	50%	30%	10%	50%	30%	10%	50%	30%	10%	0
ρ <sub>fc</sub>	20%			20%			20%			20%			20%			0
RCR	RCR:Room Cavity Ratio						Wall Exitance Coefficients(WEC)									
0.0																
1.0	.371	.211	.067	.364	.207	.066	.350	.201	.064	.338	.195	.062	.326	.189	.061	
2.0	.323	.177	.054	.317	.175	.054	.305	.170	.053	.294	.165	.052	.284	.161	.051	
3.0	.289	.154	.046	.283	.152	.046	.273	.148	.045	.263	.144	.044	.254	.141	.044	
4.0	.262	.136	.040	.257	.134	.040	.247	.131	.039	.239	.128	.039	.230	.125	.038	
5.0	.239	.122	.035	.234	.120	.035	.226	.118	.035	.218	.115	.034	.211	.113	.034	
6.0	.220	.110	.031	.216	.109	.031	.208	.107	.031	.201	.105	.031	.195	.103	.030	
7.0	.203	.100	.028	.200	.099	.028	.193	.098	.028	.187	.096	.028	.181	.094	.028	
8.0	.189	.092	.026	.186	.091	.026	.180	.090	.026	.174	.088	.025	.169	.087	.025	
9.0	.176	.085	.024	.174	.085	.024	.168	.083	.024	.163	.082	.023	.159	.081	.023	
10.0	.165	.079	.022	.163	.079	.022	.158	.078	.022	.154	.076	.022	.150	.075	.022	

ρ <sub>CC</sub>	80%			70%			50%			30%			10%			0
ρ <sub>w</sub>	50%	30%	10%	50%	30%	10%	50%	30%	10%	50%	30%	10%	50%	30%	10%	0
ρ <sub>fc</sub>	20%			20%			20%			20%			20%			0
RCR	RCR:Room Cavity Ratio						Ceiling Cavity Exitance Coefficients(CCEC)									
0.0	.190	.190	.190	.163	.163	.163	.111	.111	.111	.064	.064	.064	.020	.020	.020	
1.0	.185	.156	.130	.158	.134	.111	.108	.092	.077	.062	.053	.045	.020	.017	.014	
2.0	.176	.132	.094	.151	.113	.081	.104	.078	.057	.060	.046	.033	.019	.015	.011	
3.0	.168	.114	.072	.144	.099	.062	.099	.069	.044	.057	.040	.026	.018	.013	.008	
4.0	.160	.101	.056	.137	.087	.049	.094	.061	.035	.055	.036	.020	.018	.012	.007	
5.0	.152	.091	.046	.130	.079	.040	.090	.055	.028	.052	.032	.017	.017	.011	.006	
6.0	.144	.083	.038	.124	.071	.033	.086	.050	.024	.050	.029	.014	.016	.010	.005	
7.0	.137	.076	.033	.118	.066	.028	.081	.046	.020	.047	.027	.012	.015	.009	.004	
8.0	.130	.070	.028	.112	.061	.025	.078	.043	.017	.045	.025	.010	.015	.008	.003	
9.0	.124	.065	.025	.107	.056	.022	.074	.040	.015	.043	.023	.009	.014	.008	.003	
10.0	.118	.061	.022	.102	.053	.019	.071	.037	.014	.041	.022	.008	.013	.007	.003	

C Range: 0 - 360DEG  
 C Interval: 15.0DEG  
 Test Speed: HIGH  
 Temperature:25.3°C  
 Operators:DAMIN  
 Test Date:2023-12-14

γ Range: 0 - 90DEG  
 γ Interval: 1.0DEG  
 Test System:EVERFINE GO-2000B\_V1 SYSTEM V2.00.473  
 Humidity:65.0%  
 Test Distance:9.401m [K=1.0000]  
 Remarks:

**UGR(Unified Glare Rating) Table**

Test:U:220.34V I:0.0753A P:9.6192W PF:0.5801 Freq:50.00Hz										
Lamp Flux:538.959x1 lm										
NAME:		TYPE: 筒灯				WEIGHT:				
SPEC.:		DIM.:				SERIAL No.:				
MFR.: EVERFINE		SUR.: 80mm				Shielding Angle:				
ceiling/cavity	0.7	0.7	0.5	0.5	0.3	0.7	0.7	0.5	0.5	0.3
walls	0.5	0.3	0.5	0.3	0.3	0.5	0.3	0.5	0.3	0.3
working plane	0.2	0.2	0.2	0.2	0.2	0.2	0.2	0.2	0.2	0.2
Room dimensions	Viewed crosswise					Viewed endwise				
x = 2H y = 2H	26.6	28.2	26.9	28.4	28.6	26.3	27.9	26.6	28.1	28.3
3H	28.5	30.0	28.8	30.2	30.5	28.1	29.6	28.4	29.8	30.1
4H	29.5	30.9	29.9	31.2	31.5	29.1	30.5	29.4	30.7	31.0
6H	30.7	32.0	31.0	32.3	32.6	30.1	31.5	30.5	31.7	32.0
8H	31.4	32.7	31.8	33.0	33.3	30.8	32.1	31.2	32.4	32.7
12H	32.3	33.5	32.7	33.8	34.2	31.6	32.9	32.0	33.2	33.5
4H 2H	27.3	28.7	27.6	28.9	29.2	27.0	28.4	27.4	28.7	29.0
3H	29.4	30.7	29.8	30.9	31.3	29.1	30.3	29.4	30.6	30.9
4H	30.6	31.7	31.0	32.1	32.4	30.2	31.3	30.6	31.7	32.0
6H	32.0	33.0	32.4	33.4	33.7	31.5	32.5	31.9	32.9	33.2
8H	32.8	33.8	33.3	34.2	34.6	32.3	33.3	32.7	33.6	34.0
12H	33.9	34.8	34.3	35.2	35.6	33.3	34.2	33.7	34.6	35.0
8H 4H	31.0	32.0	31.5	32.4	32.8	30.7	31.7	31.1	32.1	32.4
6H	32.7	33.6	33.2	34.0	34.4	32.3	33.1	32.8	33.6	34.0
8H	33.8	34.6	34.3	35.0	35.4	33.3	34.1	33.8	34.5	35.0
12H	35.1	35.8	35.6	36.2	36.7	34.6	35.2	35.1	35.7	36.2
12H 4H	31.2	32.1	31.6	32.4	32.9	30.8	31.7	31.3	32.1	32.5
6H	33.0	33.7	33.4	34.1	34.6	32.6	33.3	33.0	33.8	34.2
8H	34.2	34.8	34.6	35.3	35.7	33.7	34.4	34.2	34.8	35.3
Variations with the observer position at spacings(CIE Pub.117):										
S = 1.0H	+ 0.1 / - 0.2					+ 0.1 / - 0.2				
1.5H	+ 0.2 / - 0.3					+ 0.2 / - 0.3				
2.0H	+ 0.2 / - 0.3					+ 0.2 / - 0.4				

CIE Pub.117, 539.0 lm Total Lamp Luminous Flux Correct (8log(F/F0) = -2.1)  
 Area: 0.005 m2

C Range: 0 - 360DEG  
 C Interval: 15.0DEG  
 Test Speed: HIGH  
 Temperature:25.3°C  
 Operators:DAMIN  
 Test Date:2023-12-14

γ Range: 0 - 90DEG  
 γ Interval: 1.0DEG  
 Test System:EVERFINE GO-2000B\_V1 SYSTEM V2.00.473  
 Humidity:65.0%  
 Test Distance:9.401m [K=1.0000]  
 Remarks:

**UTILIZATION FACTORS TABLE**

Test:U:220.34V I:0.0753A P:9.6192W PF:0.5801 Freq:50.00Hz Lamp Flux:538.959x1 lm		
NAME:	TYPE: 筒灯	WEIGHT:
SPEC.:	DIM.:	SERIAL No.:
MFR.: EVERFINE	SUR.: 80mm	Shielding Angle:

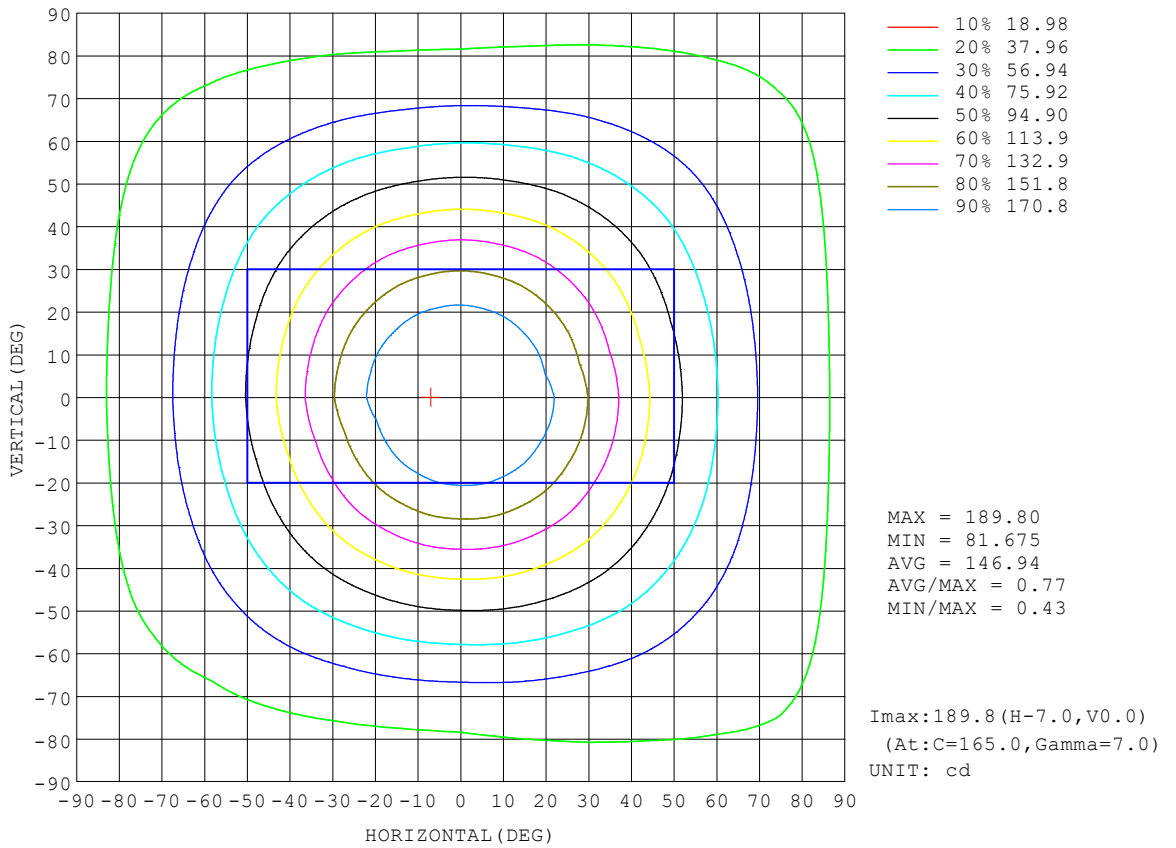
REFLECTANCE										
Ceiling	0.8	0.8	0.8	0.7	0.7	0.7	0.5	0.5	0.5	0
Walls	0.7	0.5	0.3	0.7	0.5	0.3	0.7	0.5	0.3	0
Working plane	0.2	0.2	0.2	0.2	0.2	0.2	0.2	0.2	0.2	0
ROOM INDEX	UTILIZATION FACTORS (PERCENT) $k(RI) \times RCR = 5$									
k = 0.60	57	45	38	56	45	38	55	44	38	31
0.80	66	54	47	65	54	46	63	53	46	39
1.00	74	62	55	73	62	54	70	63	54	47
1.25	81	70	62	79	69	62	76	67	61	53
1.50	86	75	67	84	74	67	81	72	66	58
2.00	92	83	76	90	82	75	87	79	73	65
2.50	96	87	81	94	86	80	90	83	78	69
3.00	100	92	85	97	90	84	93	87	82	73
4.00	104	97	92	101	95	90	97	92	88	78
5.00	106	101	96	104	99	94	99	95	91	81
ROOM INDEX	UF(total)									Direct
According to DIN EN 13032-2 2004			Suspended				SHRNOM = 1.25			

C Range: 0 - 360DEG  
 C Interval: 15.0DEG  
 Test Speed: HIGH  
 Temperature:25.3°C  
 Operators:DAMIN  
 Test Date:2023-12-14

$\gamma$  Range: 0 - 90DEG  
 $\gamma$  Interval: 1.0DEG  
 Test System:EVERFINE GO-2000B\_V1 SYSTEM V2.00.473  
 Humidity:65.0%  
 Test Distance:9.401m [K=1.0000]  
 Remarks:

**ISOCANDELA DIAGRAM**

Test:U:220.34V I:0.0753A P:9.6192W PF:0.5801 Freq:50.00Hz Lamp Flux:538.959x1 lm		
NAME:	TYPE: 筒灯	WEIGHT:
SPEC.:	DIM.:	SERIAL No.:
MFR.: EVERFINE	SUR.: 80mm	Shielding Angle:



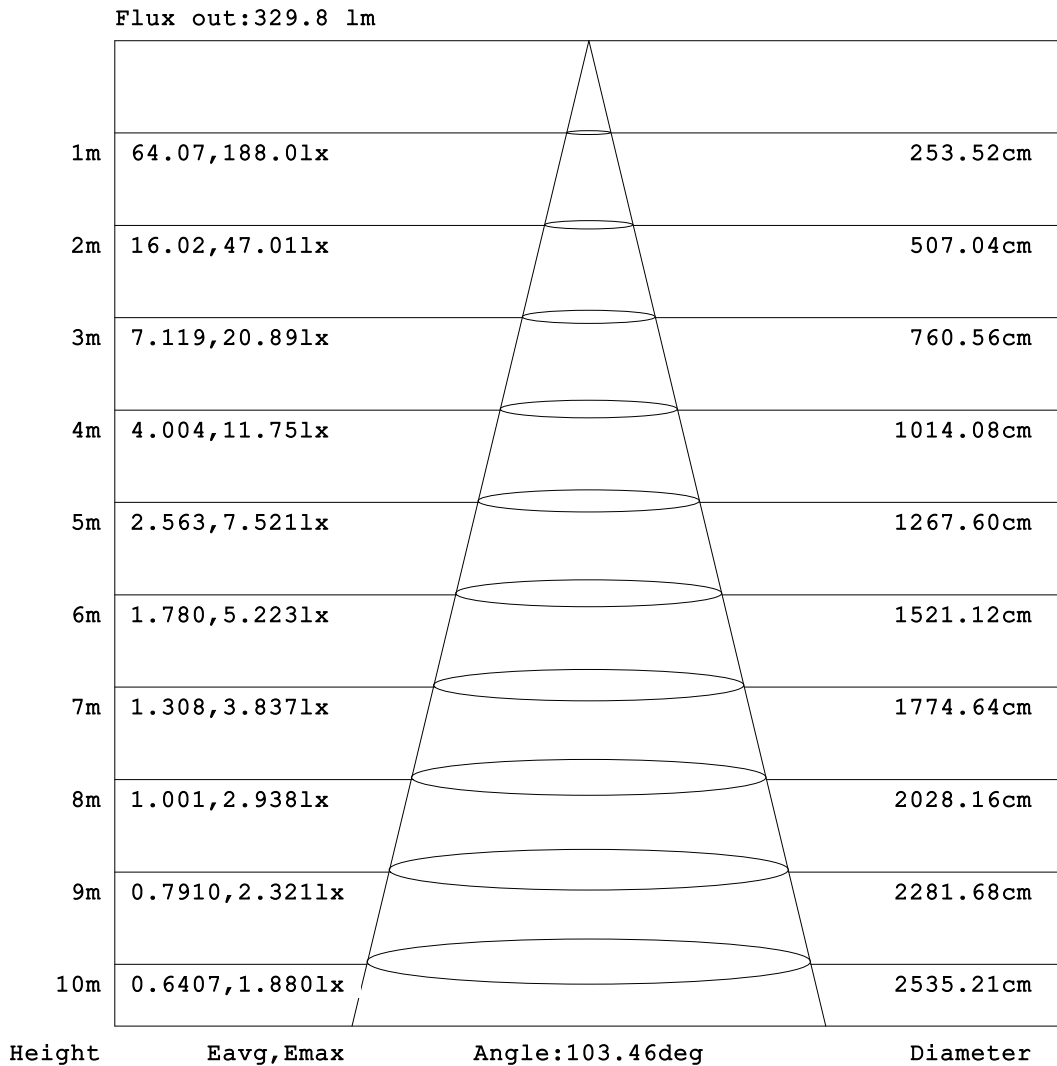
C Range: 0 - 360DEG  
 C Interval: 15.0DEG  
 Test Speed: HIGH  
 Temperature: 25.3°C  
 Operators: DAMIN  
 Test Date: 2023-12-14

γ Range: 0 - 90DEG  
 γ Interval: 1.0DEG  
 Test System: EVERFINE GO-2000B\_V1 SYSTEM V2.00.473  
 Humidity: 65.0%  
 Test Distance: 9.401m [K=1.0000]  
 Remarks:



**AAI Figure**

Test:U:220.34V I:0.0753A P:9.6192W PF:0.5801 Freq:50.00Hz Lamp Flux:538.959x1 lm		
NAME:	TYPE: 筒灯	WEIGHT:
SPEC.:	DIM.:	SERIAL No.:
MFR.: EVERFINE	SUR.: 80mm	Shielding Angle:



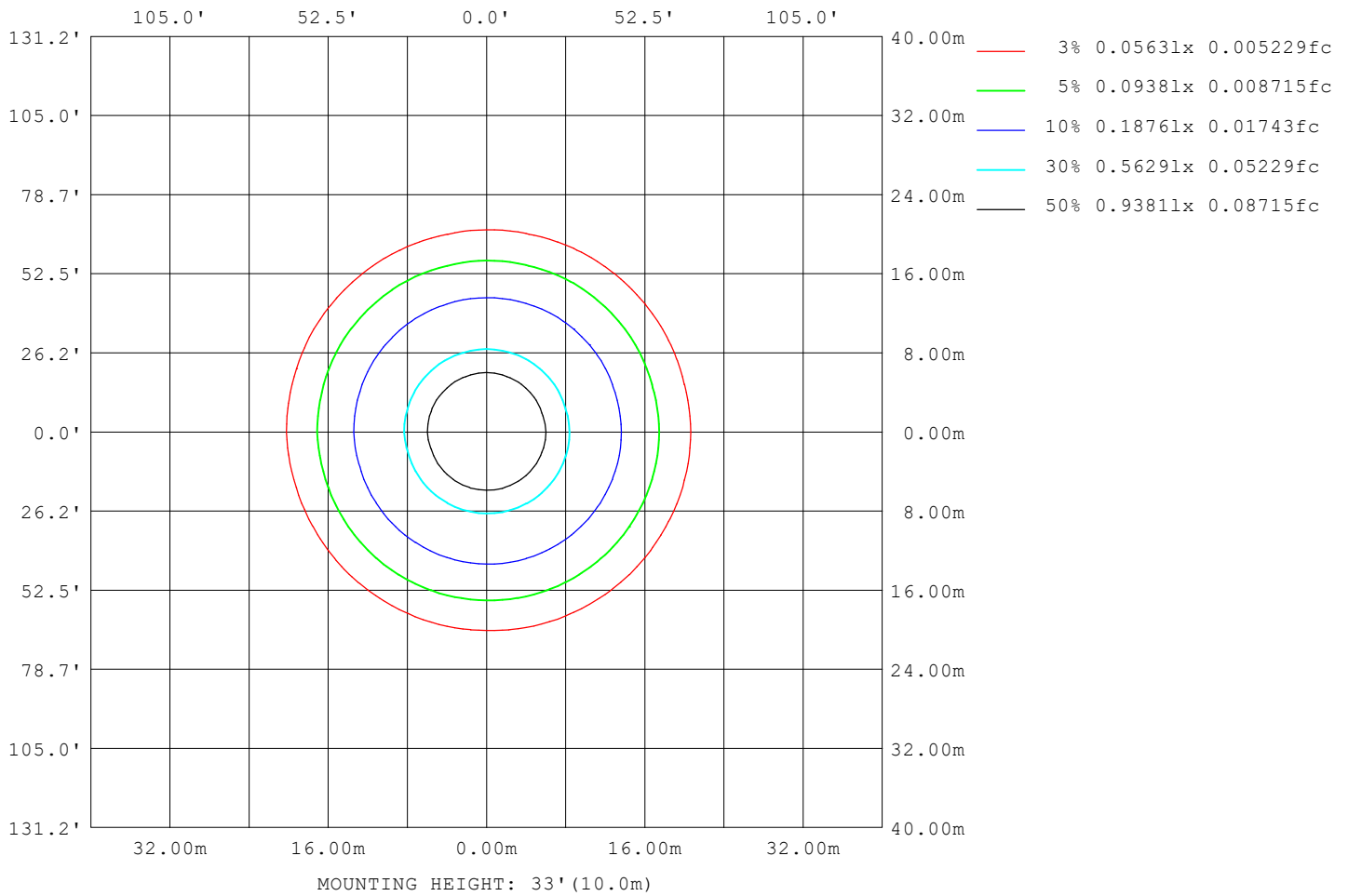
Note:The Curves indicate the illuminated area and the average illumination when the luminaire is at different distance.

C Range: 0 - 360DEG  
C Interval: 15.0DEG  
Test Speed: HIGH  
Temperature:25.3°C  
Operators:DAMIN  
Test Date:2023-12-14

γ Range: 0 - 90DEG  
γ Interval: 1.0DEG  
Test System:EVERFINE GO-2000B\_V1 SYSTEM V2.00.473  
Humidity:65.0%  
Test Distance:9.401m [K=1.0000]  
Remarks:

**ISOLUX DIAGRAM**

Test:U:220.34V I:0.0753A P:9.6192W PF:0.5801 Freq:50.00Hz Lamp Flux:538.959x1 lm		
NAME:	TYPE: 筒灯	WEIGHT:
SPEC.:	DIM.:	SERIAL No.:
MFR.: EVERFINE	SUR.: 80mm	Shielding Angle:



C Range: 0 - 360DEG  
C Interval: 15.0DEG  
Test Speed: HIGH  
Temperature:25.3°C  
Operators:DAMIN  
Test Date:2023-12-14

γ Range: 0 - 90DEG  
γ Interval: 1.0DEG  
Test System:EVERFINE GO-2000B\_V1 SYSTEM V2.00.473  
Humidity:65.0%  
Test Distance:9.401m [K=1.0000]  
Remarks:

**LED Avg.L Report**

Test:U:220.34V I:0.0753A P:9.6192W PF:0.5801 Freq:50.00Hz Lamp Flux:538.959x1 lm		
NAME:	TYPE: 筒灯	WEIGHT:
SPEC.:	DIM.:	SERIAL No.:
MFR.: EVERFINE	SUR.: 80mm	Shielding Angle:

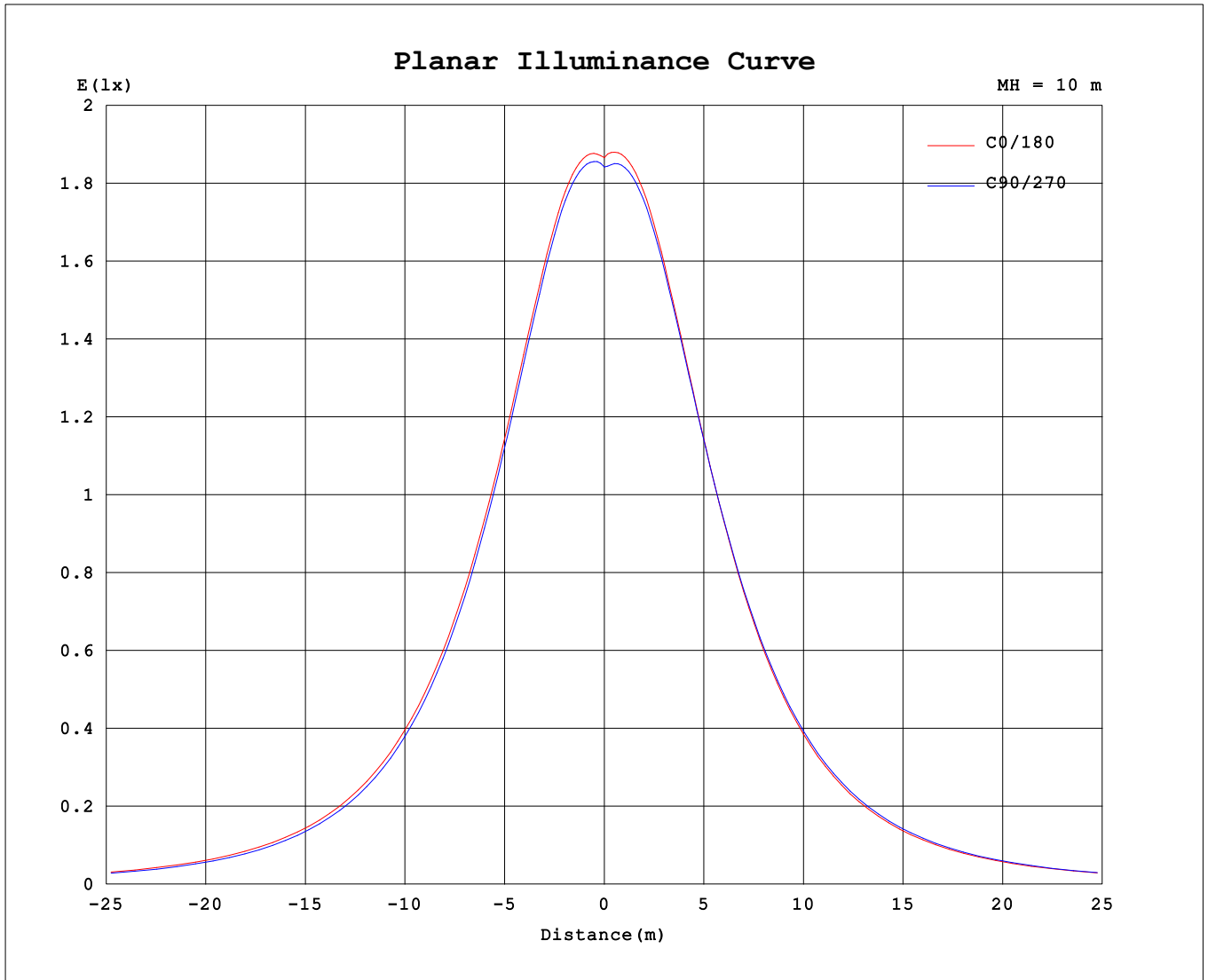
AvgL	cd/m2
L_0~180 (65) av	29879
L_0~180 (75) av	34858
L_0~180 (85) av	85873
L_90~270 (65) av	29441
L_90~270 (75) av	33331
L_90~270 (85) av	81403
L_45 (65) av	29802
L_45 (75) av	34000
L_45 (85) av	82985

Standard: GB/T 29293-2012

C Range: 0 - 360DEG  
 C Interval: 15.0DEG  
 Test Speed: HIGH  
 Temperature:25.3°C  
 Operators:DAMIN  
 Test Date:2023-12-14

γ Range: 0 - 90DEG  
 γ Interval: 1.0DEG  
 Test System:EVERFINE GO-2000B\_V1 SYSTEM V2.00.473  
 Humidity:65.0%  
 Test Distance:9.401m [K=1.0000]  
 Remarks:

**Planar Illuminance Curve**



C Range: 0 - 360DEG  
 C Interval: 15.0DEG  
 Test Speed: HIGH  
 Temperature: 25.3°C  
 Operators: DAMIN  
 Test Date: 2023-12-14

γ Range: 0 - 90DEG  
 γ Interval: 1.0DEG  
 Test System: EVERFINE GO-2000B\_V1 SYSTEM V2.00.473  
 Humidity: 65.0%  
 Test Distance: 9.401m [K=1.0000]  
 Remarks:

LUMINOUS DISTRIBUTION INTENSITY DATA

Test:U:220.34V I:0.0753A P:9.6192W PF:0.5801 Freq:50.00Hz Lamp Flux:538.959x1 lm		
NAME:	TYPE: 筒灯	WEIGHT:
SPEC.:	DIM.:	SERIAL No.:
MFR.: EVERFINE	SUR.: 80mm	Shielding Angle:

Table--1

UNIT: cd

C (DEG) γ (DEG)	0	15	30	45	60	75	90	105	120	135	150	165	180	195	210	225	240	255	270
0	184	184	184	184	184	184	184	184	184	184	184	184	184	184	184	184	184	184	184
5	187	187	187	187	187	187	187	187	187	188	188	188	187	187	187	187	187	187	187
10	187	187	186	187	187	187	187	187	187	187	187	187	187	187	187	187	187	187	187
15	182	182	181	182	182	182	182	182	182	182	182	182	182	182	183	183	183	183	183
20	173	173	173	173	173	173	172	173	172	173	173	173	173	173	174	174	174	174	174
25	162	162	161	162	161	161	161	161	161	161	161	162	162	162	163	163	163	163	164
30	150	150	149	149	149	149	148	148	148	148	148	149	149	149	150	150	151	151	151
35	137	137	136	136	135	135	135	135	134	135	134	135	135	136	137	137	138	138	138
40	124	123	123	123	122	122	121	121	120	121	121	121	121	122	123	123	124	124	125
45	111	111	110	110	109	109	108	107	107	107	107	107	108	108	109	110	111	111	112
50	98.4	98.2	97.5	97.2	96.3	95.8	94.8	94.6	94.1	94.3	94.0	94.5	94.8	95.3	96.6	97.0	97.8	98.1	98.8
55	86.7	86.5	85.7	85.3	84.3	83.7	82.6	82.4	81.9	82.1	81.8	82.3	82.6	83.1	84.4	84.8	85.7	85.9	86.7
60	75.6	75.4	74.5	74.0	73.0	72.3	71.2	71.0	70.5	70.6	70.4	71.0	71.4	71.8	73.0	73.3	74.1	74.2	75.1
65	65.2	65.1	64.1	63.5	62.3	61.6	60.4	60.3	59.7	60.0	59.9	60.6	61.0	61.4	62.3	62.5	63.1	63.2	64.0
70	55.5	55.2	54.1	53.5	52.4	51.7	50.6	50.3	50.0	50.2	50.1	51.0	51.6	51.6	52.3	52.5	52.9	53.0	53.6
75	46.7	46.3	45.3	44.6	43.7	43.0	42.0	41.7	41.4	41.6	41.7	42.8	43.5	43.3	43.5	43.6	43.9	43.9	44.3
80	41.7	41.4	40.3	39.6	38.9	38.1	37.2	36.9	36.9	36.9	37.2	38.3	39.0	38.7	38.5	38.6	38.7	38.7	38.9
85	38.6	38.3	37.3	36.8	36.3	35.6	34.8	34.4	34.3	34.3	34.4	35.5	36.3	36.0	35.7	35.9	36.1	36.0	36.2
90	35.2	35.1	34.9	34.6	34.1	33.7	33.0	32.7	32.3	32.4	32.4	32.5	32.9	33.2	33.6	33.2	33.9	34.0	34.1

C Range: 0 - 360DEG	γ Range: 0 - 90DEG
C Interval: 15.0DEG	γ Interval: 1.0DEG
Test Speed: HIGH	Test System:EVERFINE GO-2000B_V1 SYSTEM V2.00.473
Temperature:25.3℃	Humidity:65.0%
Operators:DAMIN	Test Distance:9.401m [K=1.0000]
Test Date:2023-12-14	Remarks:

