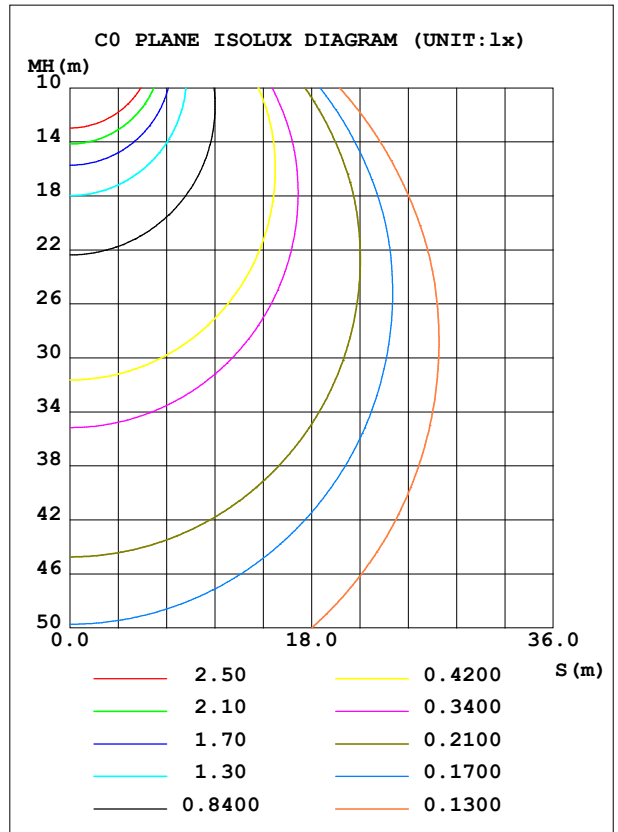
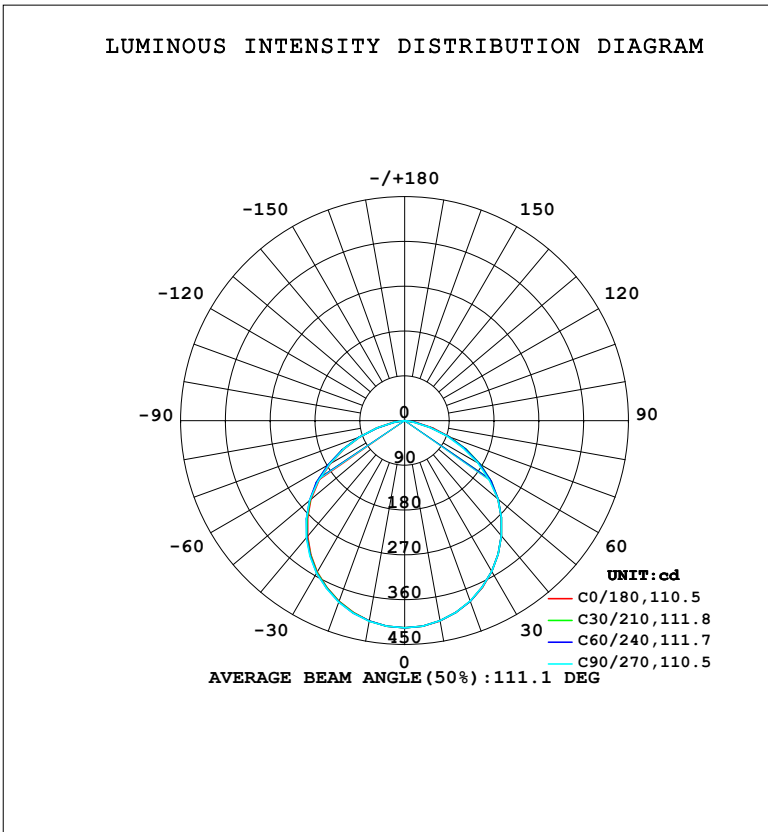


LUMINAIRE PHOTOMETRIC TEST REPORT

Test:U:220.47V I:0.0985A P:11.936W PF:0.5497 Freq:50.00Hz Lamp Flux:1133.55x1 lm		
NAME:	TYPE:	WEIGHT:
SPEC.:	DIM.:	SERIAL No.:
MFR.: EVERFINE	SUR.:	Shielding Angle:

DATA OF LAMP		PHOTOMETRIC DATA				Eff: 94.97 lm/W
MODEL	123S	I _{max} (cd)	416.5	S/MH (C0/180)	1.25	
NOMINAL POWER (W)	12	LOR (%)	100.0	S/MH (C90/270)	1.26	
RATED VOLTAGE (V)	220	TOTAL FLUX (lm)	1133.6	η UP, DN (C0-180)	0.0, 49.8	
NOMINAL FLUX (lm)	1133.55	CIE CLASS	DIRECT	η UP, DN (C180-360)	0.0, 50.2	
LAMPS INSIDE	1	η up (%)	0.0	CIBSE SHR NOM	1.25	
TEST VOLTAGE (V)	219.5	η down (%)	100.0	CIBSE SHR MAX	1.35	



C Range: 0 - 360DEG
 C Interval: 15.0DEG
 Test Speed: HIGH
 Temperature: 25.3°C
 Operators: DAMIN
 Test Date: 2024-01-26

γ Range: 0 - 90DEG
 γ Interval: 5.0DEG
 Test System: EVERFINE GO-2000B_V1 SYSTEM V2.00.473
 Humidity: 65.0%
 Test Distance: 9.401m [K=1.0000]
 Remarks:

ZONAL FLUX DIAGRAM

ZONAL FLUX DIAGRAM:

γ	C0	C45	C90	C135	C180	C225	C270	C315	γ	Φ zone	Φ total	%lum, lamp
10	408.8	408.8	408.4	408.5	408.8	408.9	409.4	409.1	0- 10	39.39	39.39	3.47,3.47
20	386.1	386.3	385.8	385.9	386.1	386.6	387.9	387.0	10- 20	112.7	152.1	13.4,13.4
30	350.2	352.1	350.0	351.6	351.5	351.1	354.3	351.7	20- 30	170.7	322.8	28.5,28.5
40	302.4	304.8	302.4	304.0	303.7	303.9	307.4	304.7	30- 40	205.9	528.8	46.6,46.6
50	244.7	247.4	244.4	246.7	246.0	247.0	249.7	247.7	40- 50	213.3	742.1	65.5,65.5
60	172.8	180.2	169.4	179.2	172.9	181.0	174.4	181.3	50- 60	189.7	931.7	82.2,82.2
70	95.76	94.51	89.67	93.78	96.39	95.94	95.74	96.23	60- 70	134.3	1066	94,94
80	24.79	20.50	16.88	20.06	25.27	21.84	21.54	21.62	70- 80	60.42	1126	99.4,99.4
90	0.6205	0.6247	0.6032	0.6167	0.7637	0.7689	0.7420	0.7619	80- 90	7.130	1134	100,100
100									90-100			
110									100-110			
120									110-120			
130									120-130			
140									130-140			
150									140-150			
160									150-160			
170									160-170			
180									170-180			
DEG	LUMINOUS INTENSITY:cd									UNIT:lm		

Conical surface Flux(90deg): 636.3 lm

%lum = 56.1%

%lamp = 56.1%

Conical surface Flux(130deg): 1007.4 lm

%lum = 88.9%

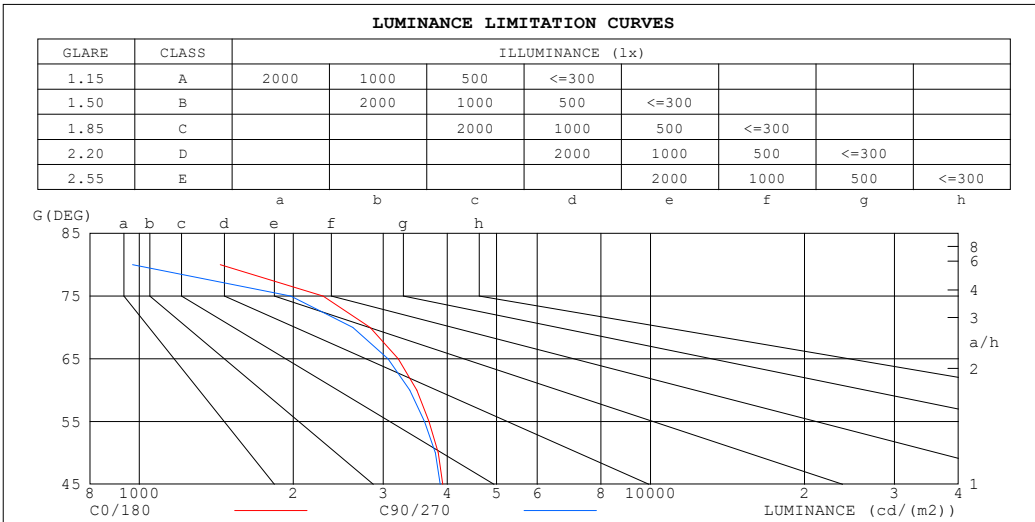
%lamp = 88.9%

C Range: 0 - 360DEG
 C Interval: 15.0DEG
 Test Speed: HIGH
 Temperature:25.3°C
 Operators:DAMIN
 Test Date:2024-01-26

γ Range: 0 - 90DEG
 γ Interval: 5.0DEG
 Test System:EVERFINE GO-2000B_V1 SYSTEM V2.00.473
 Humidity:65.0%
 Test Distance:9.401m [K=1.0000]
 Remarks:

LUMINANCE LIMITATION CURVES

Test:U:220.47V I:0.0985A P:11.936W PF:0.5497 Freq:50.00Hz Lamp Flux:1133.55x1 lm		
NAME:	TYPE:	WEIGHT:
SPEC.:	DIM.:	SERIAL No.:
MFR.: EVERFINE	SUR.:	Shielding Angle:



LUMINANCE cd/(m2)		
G (DEG)	C0/180	C90/270
85	291	200
80	1441	970
75	2287	1976
70	2826	2617
65	3208	3065
60	3488	3382
55	3684	3611
50	3841	3796
45	3922	3879

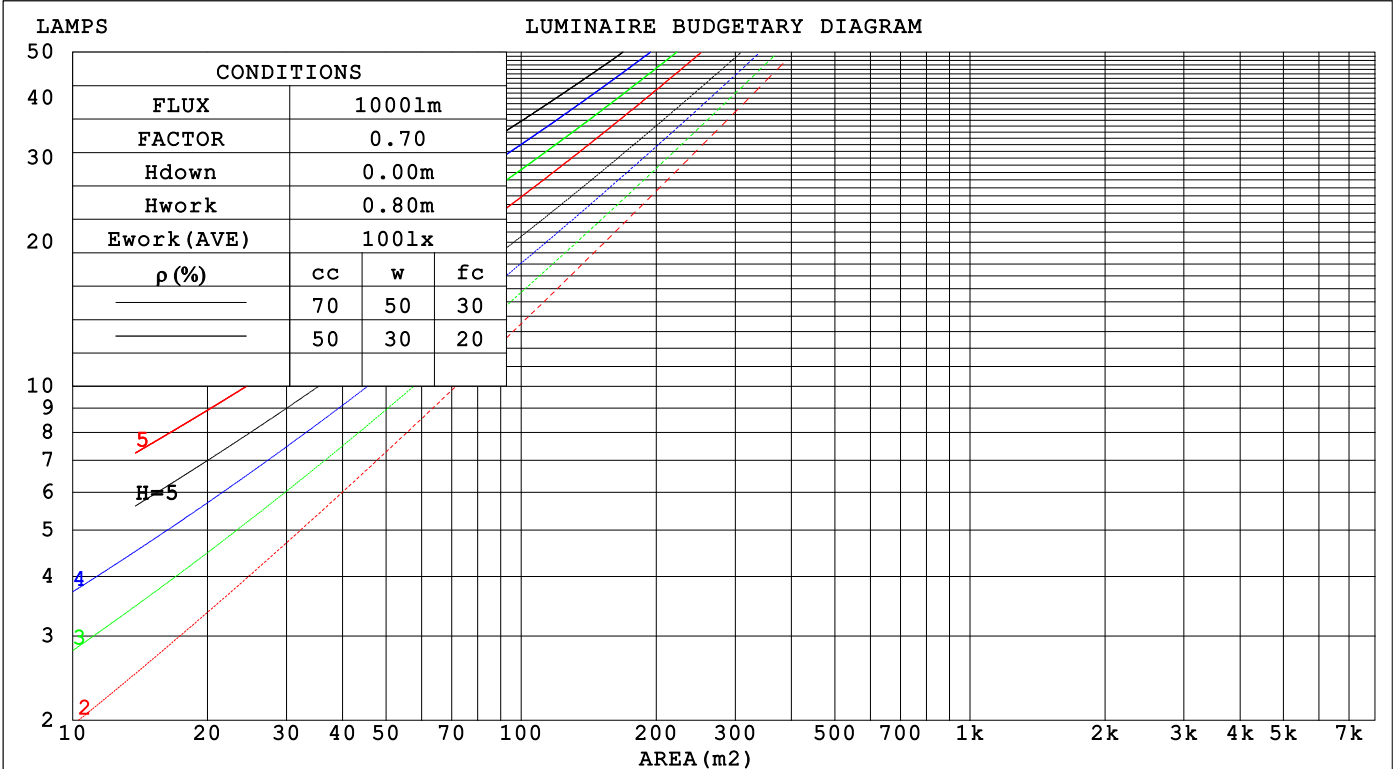
C Range: 0 - 360DEG
 C Interval: 15.0DEG
 Test Speed: HIGH
 Temperature:25.3°C
 Operators:DAMIN
 Test Date:2024-01-26

γ Range: 0 - 90DEG
 γ Interval: 5.0DEG
 Test System:EVERFINE GO-2000B_V1 SYSTEM V2.00.473
 Humidity:65.0%
 Test Distance:9.401m [K=1.0000]
 Remarks:

CU AND LUMINAIRE BUDGETARY ESTIMATE DIAGRAM

Test:U:220.47V I:0.0985A P:11.936W PF:0.5497 Freq:50.00Hz Lamp Flux:1133.55x1 lm		
NAME:	TYPE:	WEIGHT:
SPEC.:	DIM.:	SERIAL No.:
MFR.: EVERFINE	SUR.:	Shielding Angle:

pcc	80%			70%			50%			30%			10%			0
	50%	30%	10%	50%	30%	10%	50%	30%	10%	50%	30%	10%	50%	30%	10%	0
p _w	20%			20%			20%			20%			20%			0
p _{fc}	20%			20%			20%			20%			20%			0
RCR	RCR:Room Cavity Ratio Coefficients of Utilization(CU)															
0.0	1.19	1.19	1.19	1.16	1.16	1.16	1.11	1.11	1.11	1.06	1.06	1.06	1.02	1.02	1.02	1.00
1.0	1.05	1.01	.97	1.03	.99	.96	.99	.96	.93	.95	.92	.90	.91	.89	.87	.85
2.0	.92	.85	.80	.90	.84	.79	.87	.82	.77	.83	.79	.75	.80	.77	.74	.72
3.0	.81	.73	.67	.79	.72	.66	.76	.70	.65	.74	.68	.64	.71	.67	.63	.61
4.0	.72	.63	.57	.70	.62	.56	.68	.61	.55	.66	.60	.55	.63	.58	.54	.52
5.0	.64	.55	.49	.63	.55	.49	.61	.54	.48	.59	.53	.47	.57	.51	.47	.45
6.0	.58	.49	.43	.57	.48	.42	.55	.48	.42	.53	.47	.42	.52	.46	.41	.39
7.0	.52	.44	.38	.52	.43	.37	.50	.43	.37	.49	.42	.37	.47	.41	.37	.35
8.0	.48	.39	.34	.47	.39	.33	.46	.38	.33	.45	.38	.33	.43	.37	.33	.31
9.0	.44	.36	.30	.43	.35	.30	.42	.35	.30	.41	.34	.30	.40	.34	.30	.28
10.0	.40	.33	.27	.40	.32	.27	.39	.32	.27	.38	.32	.27	.37	.31	.27	.25



C Range: 0 - 360DEG
 C Interval: 15.0DEG
 Test Speed: HIGH
 Temperature:25.3°C
 Operators:DAMIN
 Test Date:2024-01-26

γ Range: 0 - 90DEG
 γ Interval: 5.0DEG
 Test System:EVERFINE GO-2000B_V1 SYSTEM V2.00.473
 Humidity:65.0%
 Test Distance:9.401m [K=1.0000]
 Remarks:

WEC AND CCEC

Test:U:220.47V I:0.0985A P:11.936W PF:0.5497 Freq:50.00Hz								
Lamp Flux:1133.55x1 lm								
NAME:			TYPE:			WEIGHT:		
SPEC.:			DIM.:			SERIAL No.:		
MFR.: EVERFINE			SUR.:			Shielding Angle:		

ρ _{CC}	80%			70%			50%			30%			10%			0
ρ _w	50%	30%	10%	50%	30%	10%	50%	30%	10%	50%	30%	10%	50%	30%	10%	0
ρ _{fc}	20%			20%			20%			20%			20%			0
RCR	RCR:Room Cavity Ratio						Wall Exitance Coefficients (WEC)									
0.0																
1.0	.287	.163	.052	.280	.160	.051	.267	.153	.049	.255	.147	.047	.244	.141	.046	
2.0	.277	.152	.047	.271	.149	.046	.259	.144	.045	.249	.140	.044	.239	.135	.043	
3.0	.260	.138	.041	.254	.136	.041	.244	.132	.040	.235	.129	.039	.226	.125	.039	
4.0	.242	.126	.037	.237	.124	.037	.228	.121	.036	.220	.118	.036	.212	.115	.035	
5.0	.225	.115	.033	.221	.113	.033	.213	.111	.033	.205	.108	.032	.198	.106	.032	
6.0	.209	.105	.030	.206	.104	.030	.199	.102	.030	.192	.100	.029	.186	.098	.029	
7.0	.196	.097	.027	.192	.096	.027	.186	.094	.027	.180	.092	.027	.174	.090	.027	
8.0	.183	.089	.025	.180	.089	.025	.174	.087	.025	.169	.086	.025	.164	.084	.024	
9.0	.172	.083	.023	.169	.082	.023	.164	.081	.023	.159	.080	.023	.155	.079	.023	
10.0	.162	.078	.022	.159	.077	.021	.155	.076	.021	.150	.075	.021	.146	.074	.021	

ρ _{CC}	80%			70%			50%			30%			10%			0
ρ _w	50%	30%	10%	50%	30%	10%	50%	30%	10%	50%	30%	10%	50%	30%	10%	0
ρ _{fc}	20%			20%			20%			20%			20%			0
RCR	RCR:Room Cavity Ratio						Ceiling Cavity Exitance Coefficients (CCEC)									
0.0																
1.0	.190	.190	.190	.163	.163	.163	.111	.111	.111	.064	.064	.064	.020	.020	.020	
2.0	.179	.156	.136	.153	.134	.117	.105	.092	.081	.060	.053	.047	.019	.017	.015	
3.0	.170	.132	.100	.146	.114	.086	.100	.079	.060	.058	.046	.035	.018	.015	.011	
4.0	.163	.114	.076	.139	.099	.066	.096	.068	.046	.055	.040	.027	.018	.013	.009	
5.0	.155	.101	.059	.133	.087	.052	.092	.061	.036	.053	.036	.021	.017	.012	.007	
6.0	.148	.090	.048	.127	.078	.042	.087	.055	.029	.051	.032	.017	.016	.010	.006	
7.0	.141	.082	.040	.121	.071	.035	.084	.050	.024	.048	.029	.015	.016	.010	.005	
8.0	.134	.075	.034	.115	.065	.029	.080	.046	.021	.046	.027	.012	.015	.009	.004	
9.0	.128	.069	.029	.110	.060	.025	.076	.042	.018	.044	.025	.011	.014	.008	.004	
10.0	.122	.064	.025	.105	.056	.022	.073	.039	.016	.042	.023	.009	.014	.008	.003	
10.0	.116	.060	.023	.100	.052	.020	.070	.037	.014	.041	.022	.008	.013	.007	.003	

C Range: 0 - 360DEG
 C Interval: 15.0DEG
 Test Speed: HIGH
 Temperature:25.3°C
 Operators:DAMIN
 Test Date:2024-01-26

γ Range: 0 - 90DEG
 γ Interval: 5.0DEG
 Test System:EVERFINE GO-2000B_V1 SYSTEM V2.00.473
 Humidity:65.0%
 Test Distance:9.401m [K=1.0000]
 Remarks:

UGR(Unified Glare Rating) Table

Test:U:220.47V I:0.0985A P:11.936W PF:0.5497 Freq:50.00Hz										
Lamp Flux:1133.55x1 lm										
NAME:			TYPE:			WEIGHT:				
SPEC.:			DIM.:			SERIAL No.:				
MFR.: EVERFINE			SUR.:			Shielding Angle:				
ceiling/cavity	0.7	0.7	0.5	0.5	0.3	0.7	0.7	0.5	0.5	0.3
walls	0.5	0.3	0.5	0.3	0.3	0.5	0.3	0.5	0.3	0.3
working plane	0.2	0.2	0.2	0.2	0.2	0.2	0.2	0.2	0.2	0.2
Room dimensions	Viewed crosswise					Viewed endwise				
x = 2H y = 2H	17.1	18.6	17.3	18.8	19.0	17.0	18.5	17.2	18.7	18.9
3H	18.3	19.7	18.6	19.9	20.1	18.1	19.5	18.4	19.7	19.9
4H	18.7	20.0	19.0	20.2	20.5	18.4	19.7	18.7	19.9	20.2
6H	18.7	20.0	19.1	20.2	20.5	18.4	19.6	18.7	19.9	20.1
8H	18.7	19.9	19.0	20.2	20.4	18.3	19.5	18.7	19.8	20.1
12H	18.6	19.8	19.0	20.1	20.4	18.3	19.4	18.6	19.7	20.0
4H 2H	17.6	18.9	17.9	19.2	19.4	17.5	18.8	17.8	19.1	19.3
3H	19.0	20.1	19.3	20.4	20.7	18.8	19.9	19.1	20.2	20.5
4H	19.4	20.4	19.8	20.7	21.1	19.1	20.1	19.5	20.5	20.8
6H	19.5	20.4	19.9	20.8	21.1	19.2	20.1	19.5	20.4	20.8
8H	19.5	20.3	19.9	20.7	21.1	19.1	20.0	19.5	20.3	20.7
12H	19.4	20.2	19.9	20.6	21.0	19.1	19.8	19.5	20.2	20.6
8H 4H	19.4	20.3	19.9	20.7	21.0	19.2	20.0	19.6	20.4	20.8
6H	19.6	20.3	20.1	20.7	21.1	19.3	20.0	19.7	20.4	20.8
8H	19.6	20.2	20.0	20.6	21.1	19.2	19.8	19.7	20.3	20.7
12H	19.5	20.1	20.0	20.5	21.0	19.2	19.7	19.7	20.2	20.6
12H 4H	19.4	20.2	19.8	20.6	21.0	19.2	19.9	19.6	20.3	20.7
6H	19.6	20.2	20.0	20.6	21.1	19.2	19.8	19.7	20.3	20.7
8H	19.5	20.1	20.0	20.5	21.0	19.2	19.7	19.7	20.2	20.6
Variations with the observer position at spacings(CIE Pub.117):										
S = 1.0H	+ 0.2 / - 0.2					+ 0.2 / - 0.2				
1.5H	+ 0.3 / - 0.5					+ 0.3 / - 0.6				
2.0H	+ 0.4 / - 0.6					+ 0.5 / - 0.7				

CIE Pub.117, 1134 lm Total Lamp Luminous Flux Correct (8log(F/F0) = 0.4)
 Area: 0.1 m2

C Range: 0 - 360DEG
 C Interval: 15.0DEG
 Test Speed: HIGH
 Temperature:25.3°C
 Operators:DAMIN
 Test Date:2024-01-26

γ Range: 0 - 90DEG
 γ Interval: 5.0DEG
 Test System:EVERFINE GO-2000B_V1 SYSTEM V2.00.473
 Humidity:65.0%
 Test Distance:9.401m [K=1.0000]
 Remarks:

UTILIZATION FACTORS TABLE

Test:U:220.47V I:0.0985A P:11.936W PF:0.5497 Freq:50.00Hz Lamp Flux:1133.55x1 lm		
NAME:	TYPE:	WEIGHT:
SPEC.:	DIM.:	SERIAL No.:
MFR.: EVERFINE	SUR.:	Shielding Angle:

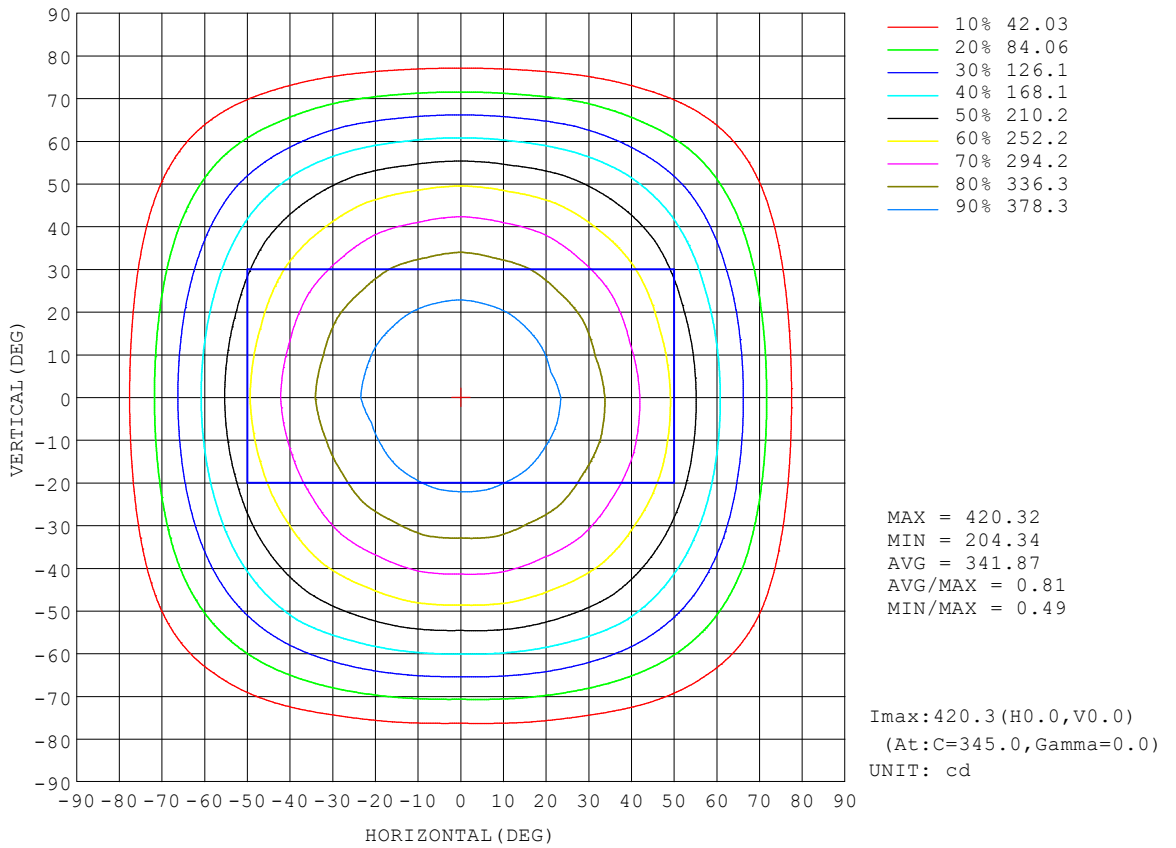
REFLECTANCE										
Ceiling	0.8	0.8	0.8	0.7	0.7	0.7	0.5	0.5	0.5	0
Walls	0.7	0.5	0.3	0.7	0.5	0.3	0.7	0.5	0.3	0
Working plane	0.2	0.2	0.2	0.2	0.2	0.2	0.2	0.2	0.2	0
ROOM INDEX	UTILIZATION FACTORS (PERCENT) $k(RI) \times RCR = 5$									
k = 0.60	58	47	40	58	47	40	57	46	40	34
0.80	69	57	50	68	57	50	66	56	50	43
1.00	77	67	59	76	66	59	74	67	59	52
1.25	85	74	68	83	74	67	80	72	66	59
1.50	90	80	73	88	79	73	85	77	72	64
2.00	96	88	82	95	87	81	91	85	80	72
2.50	100	93	87	98	91	86	94	89	84	76
3.00	103	97	92	101	95	91	97	92	88	80
4.00	107	102	98	105	100	96	101	97	94	85
5.00	110	105	101	107	103	100	103	99	97	88
ROOM INDEX	UF(total)									Direct
According to DIN EN 13032-2 2004			Suspended				SHRNOM = 1.25			

C Range: 0 - 360DEG
 C Interval: 15.0DEG
 Test Speed: HIGH
 Temperature:25.3°C
 Operators:DAMIN
 Test Date:2024-01-26

γ Range: 0 - 90DEG
 γ Interval: 5.0DEG
 Test System:EVERFINE GO-2000B_V1 SYSTEM V2.00.473
 Humidity:65.0%
 Test Distance:9.401m [K=1.0000]
 Remarks:

ISOCANDELA DIAGRAM

Test:U:220.47V I:0.0985A P:11.936W PF:0.5497 Freq:50.00Hz Lamp Flux:1133.55x1 lm		
NAME:	TYPE:	WEIGHT:
SPEC.:	DIM.:	SERIAL No.:
MFR.: EVERFINE	SUR.:	Shielding Angle:

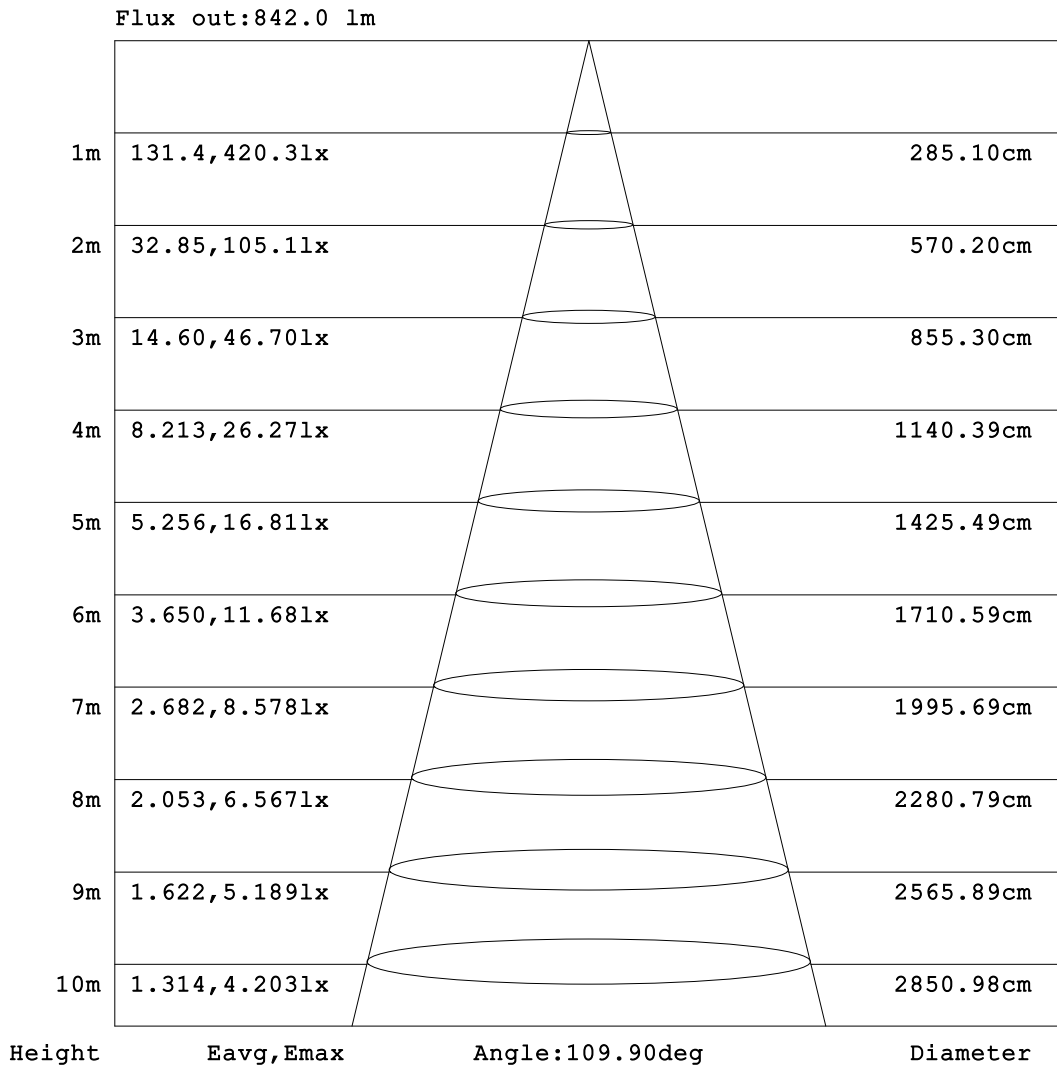


C Range: 0 - 360DEG
 C Interval: 15.0DEG
 Test Speed: HIGH
 Temperature: 25.3°C
 Operators: DAMIN
 Test Date: 2024-01-26

γ Range: 0 - 90DEG
 γ Interval: 5.0DEG
 Test System: EVERFINE GO-2000B_V1 SYSTEM V2.00.473
 Humidity: 65.0%
 Test Distance: 9.401m [K=1.0000]
 Remarks:

AAI Figure

Test:U:220.47V I:0.0985A P:11.936W PF:0.5497 Freq:50.00Hz Lamp Flux:1133.55x1 lm		
NAME:	TYPE:	WEIGHT:
SPEC.:	DIM.:	SERIAL No.:
MFR.: EVERFINE	SUR.:	Shielding Angle:



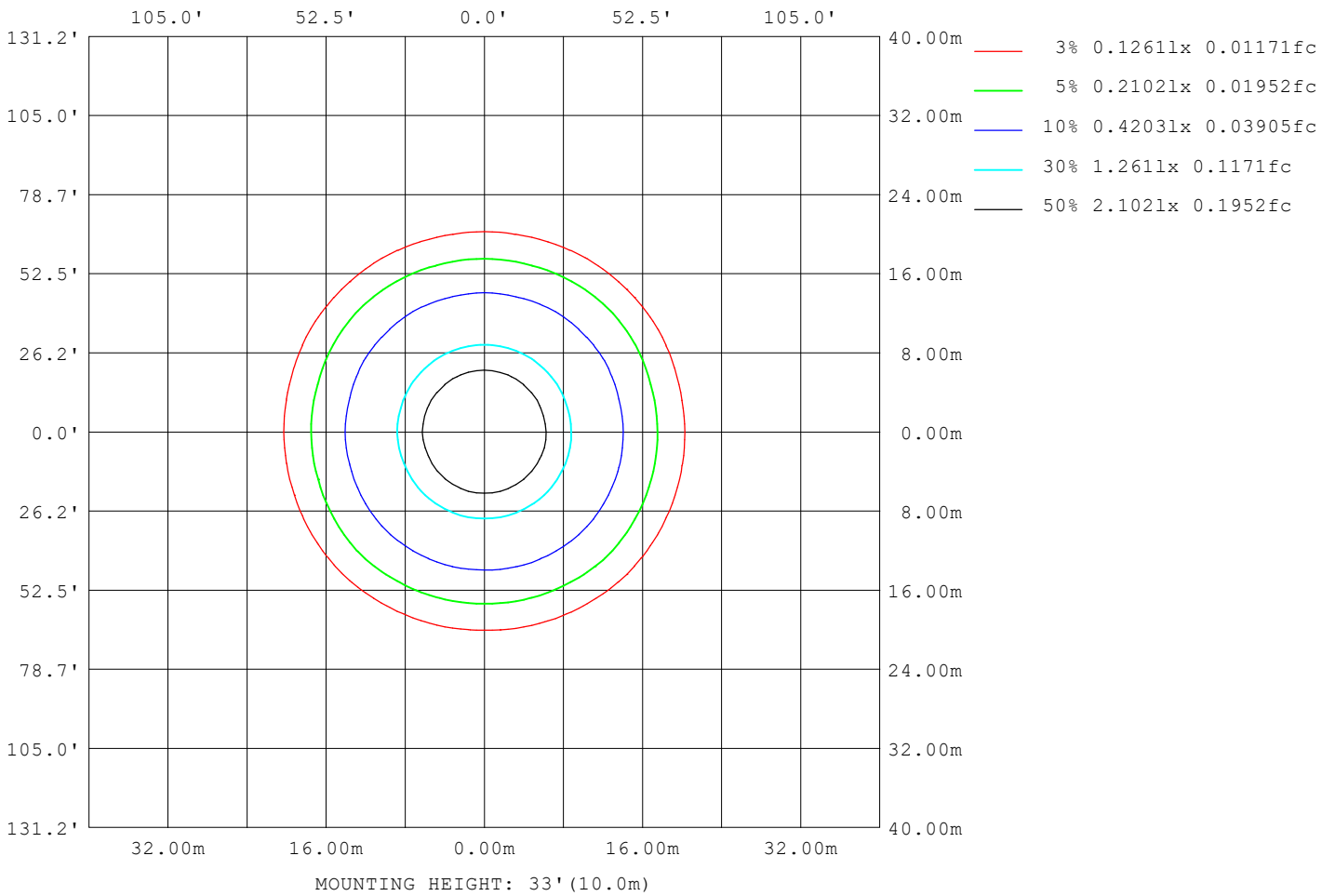
Note: The Curves indicate the illuminated area and the average illumination when the luminaire is at different distance.

C Range: 0 - 360DEG
C Interval: 15.0DEG
Test Speed: HIGH
Temperature: 25.3°C
Operators: DAMIN
Test Date: 2024-01-26

γ Range: 0 - 90DEG
γ Interval: 5.0DEG
Test System: EVERFINE GO-2000B_V1 SYSTEM V2.00.473
Humidity: 65.0%
Test Distance: 9.401m [K=1.0000]
Remarks:

ISOLUX DIAGRAM

Test:U:220.47V I:0.0985A P:11.936W PF:0.5497 Freq:50.00Hz Lamp Flux:1133.55x1 lm		
NAME:	TYPE:	WEIGHT:
SPEC.:	DIM.:	SERIAL No.:
MFR.: EVERFINE	SUR.:	Shielding Angle:



C Range: 0 - 360DEG
 C Interval: 15.0DEG
 Test Speed: HIGH
 Temperature:25.3°C
 Operators:DAMIN
 Test Date:2024-01-26

γ Range: 0 - 90DEG
 γ Interval: 5.0DEG
 Test System:EVERFINE GO-2000B_V1 SYSTEM V2.00.473
 Humidity:65.0%
 Test Distance:9.401m [K=1.0000]
 Remarks:

LED Avg.L Report

Test:U:220.47V I:0.0985A P:11.936W PF:0.5497 Freq:50.00Hz Lamp Flux:1133.55x1 lm		
NAME:	TYPE:	WEIGHT:
SPEC.:	DIM.:	SERIAL No.:
MFR.: EVERFINE	SUR.:	Shielding Angle:

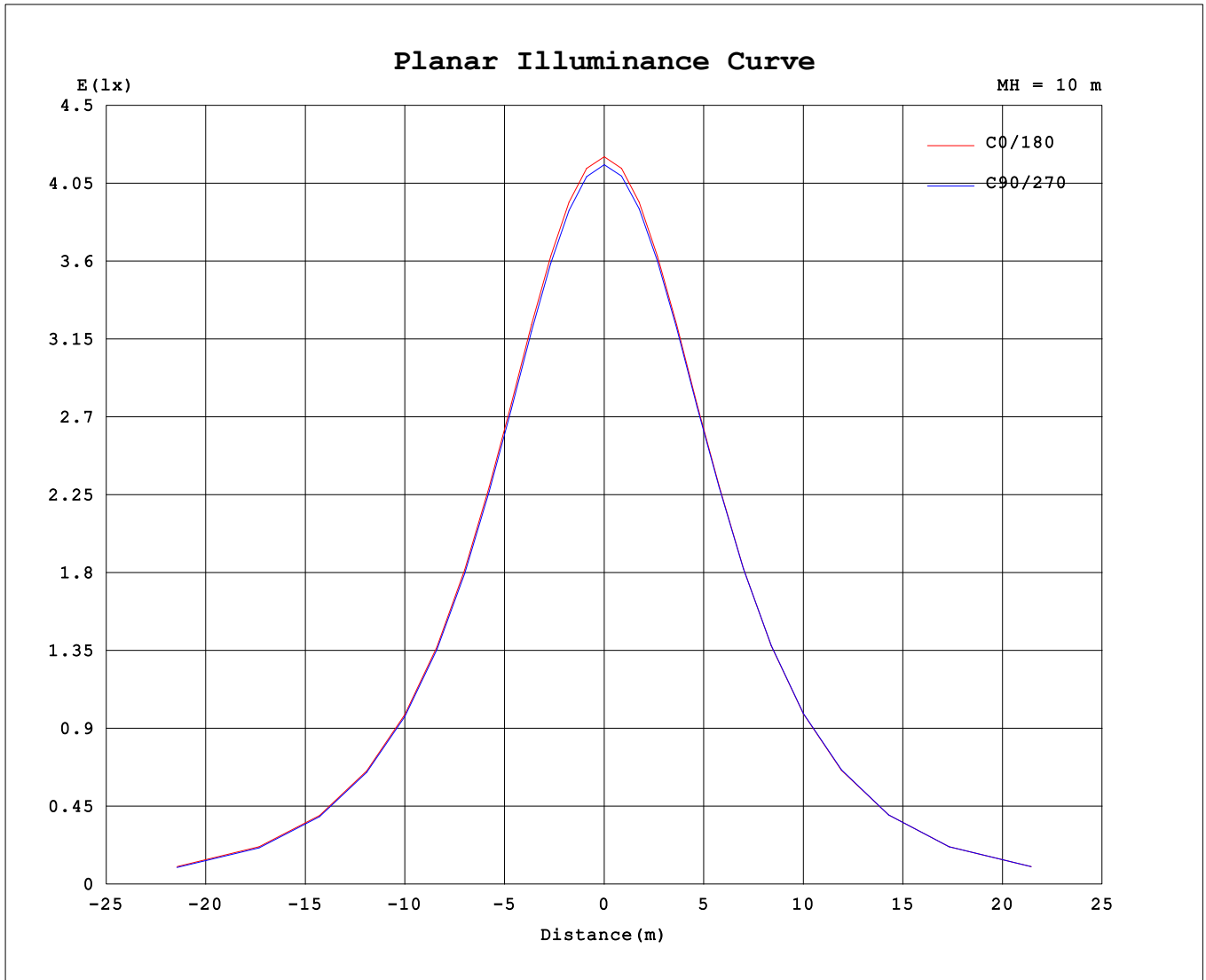
AvgL	cd/m2
L_0~180 (65) av	3183
L_0~180 (75) av	2277
L_0~180 (85) av	288
L_90~270 (65) av	3135
L_90~270 (75) av	2087
L_90~270 (85) av	222
L_45 (65) av	3251
L_45 (75) av	2128
L_45 (85) av	232

Standard: GB/T 29293-2012

C Range: 0 - 360DEG
 C Interval: 15.0DEG
 Test Speed: HIGH
 Temperature:25.3°C
 Operators:DAMIN
 Test Date:2024-01-26

γ Range: 0 - 90DEG
 γ Interval: 5.0DEG
 Test System:EVERFINE GO-2000B_V1 SYSTEM V2.00.473
 Humidity:65.0%
 Test Distance:9.401m [K=1.0000]
 Remarks:

Planar Illuminance Curve



C Range: 0 - 360DEG
 C Interval: 15.0DEG
 Test Speed: HIGH
 Temperature: 25.3°C
 Operators: DAMIN
 Test Date: 2024-01-26

γ Range: 0 - 90DEG
 γ Interval: 5.0DEG
 Test System: EVERFINE GO-2000B_V1 SYSTEM V2.00.473
 Humidity: 65.0%
 Test Distance: 9.401m [K=1.0000]
 Remarks:

LUMINOUS DISTRIBUTION INTENSITY DATA

Test:U:220.47V I:0.0985A P:11.936W PF:0.5497 Freq:50.00Hz Lamp Flux:1133.55x1 lm		
NAME:	TYPE:	WEIGHT:
SPEC.:	DIM.:	SERIAL No.:
MFR.: EVERFINE	SUR.:	Shielding Angle:

Table--1

UNIT: cd

C (DEG) \ γ (DEG)	0	15	30	45	60	75	90	105	120	135	150	165	180	195	210	225	240	255	270
0	416	416	416	416	416	416	416	416	416	416	416	416	416	416	416	416	416	416	416
5	415	415	414	415	414	415	414	414	414	414	414	415	415	414	415	415	415	415	415
10	409	409	409	409	409	409	408	409	408	409	408	409	409	409	409	409	409	409	409
15	399	400	399	399	399	399	399	399	399	399	399	399	399	399	400	399	400	400	400
20	386	387	386	386	386	386	386	386	386	386	385	386	386	386	387	387	388	387	388
25	370	370	369	370	370	370	369	370	369	370	369	370	370	369	370	370	371	371	372
30	350	352	350	352	350	352	350	352	350	352	349	351	351	350	352	351	354	352	354
35	328	330	328	330	328	330	328	330	327	329	327	329	329	327	330	329	332	330	332
40	302	304	302	305	303	305	302	304	302	304	302	304	304	302	305	304	307	305	307
45	275	277	275	277	275	277	275	277	275	277	274	276	276	275	278	277	279	278	280
50	245	247	245	247	245	247	244	246	245	247	244	246	246	245	248	247	250	248	250
55	209	212	213	215	212	211	207	210	212	214	213	212	211	210	216	215	217	212	213
60	173	175	176	180	174	172	169	171	173	179	176	174	173	173	178	181	178	174	174
65	134	136	137	137	134	132	130	132	133	136	137	136	135	135	139	138	139	135	135
70	95.8	97.6	96.2	94.5	93.3	92.2	89.7	91.7	93.0	93.8	95.2	97.3	96.4	97.0	98.4	95.9	97.9	96.0	95.7
75	58.7	59.9	55.2	54.2	52.6	53.4	51.2	53.0	52.4	54.0	54.7	59.3	59.2	59.3	57.7	56.0	57.4	57.1	56.8
80	24.8	23.9	20.3	20.5	18.3	18.3	16.9	18.2	18.2	20.1	19.9	23.2	25.3	23.7	22.0	21.8	21.9	21.3	21.5
85	2.52	2.32	2.08	1.88	1.82	1.77	1.74	1.75	1.78	1.83	2.00	2.21	2.51	2.45	2.28	2.17	2.14	2.16	2.12
90	0.62	0.62	0.65	0.62	0.62	0.61	0.60	0.60	0.62	0.62	0.64	0.64	0.76	0.81	0.80	0.77	0.76	0.76	0.74

C Range: 0 - 360DEG
 C Interval: 15.0DEG
 Test Speed: HIGH
 Temperature: 25.3°C
 Operator: DAMIN
 Test Date: 2024-01-26

γ Range: 0 - 90DEG
 γ Interval: 5.0DEG
 Test System: EVERFINE GO-2000B_V1 SYSTEM V2.00.473
 Humidity: 65.0%
 Test Distance: 9.401m [K=1.0000]
 Remarks:

LUMINOUS DISTRIBUTION INTENSITY DATA

Test:U:220.47V I:0.0985A P:11.936W PF:0.5497 Freq:50.00Hz Lamp Flux:1133.55x1 lm		
NAME:	TYPE:	WEIGHT:
SPEC.:	DIM.:	SERIAL No.:
MFR.: EVERFINE	SUR.:	Shielding Angle:

Table--2

UNIT: cd

C (DEG) γ (DEG)	285	300	315	330	345											
0	416	416	416	416	416											
5	415	415	415	415	415											
10	409	409	409	409	409											
15	400	400	400	400	399											
20	387	388	387	387	386											
25	371	372	371	371	370											
30	352	354	352	353	351											
35	330	332	330	331	328											
40	305	307	305	306	303											
45	278	280	277	278	276											
50	248	250	248	249	246											
55	212	217	216	217	211											
60	174	178	181	179	174											
65	135	138	138	140	136											
70	95.8	98.5	96.2	98.3	97.6											
75	56.9	57.6	56.2	57.5	59.5											
80	21.4	21.7	21.6	22.1	23.6											
85	2.16	2.16	2.21	2.36	2.51											
90	0.75	0.74	0.76	0.76	0.82											

C Range: 0 - 360DEG	γ Range: 0 - 90DEG
C Interval: 15.0DEG	γ Interval: 5.0DEG
Test Speed: HIGH	Test System:EVERFINE GO-2000B_V1 SYSTEM V2.00.473
Temperature:25.3°C	Humidity:65.0%
Operators:DAMIN	Test Distance:9.401m [K=1.0000]
Test Date:2024-01-26	Remarks: