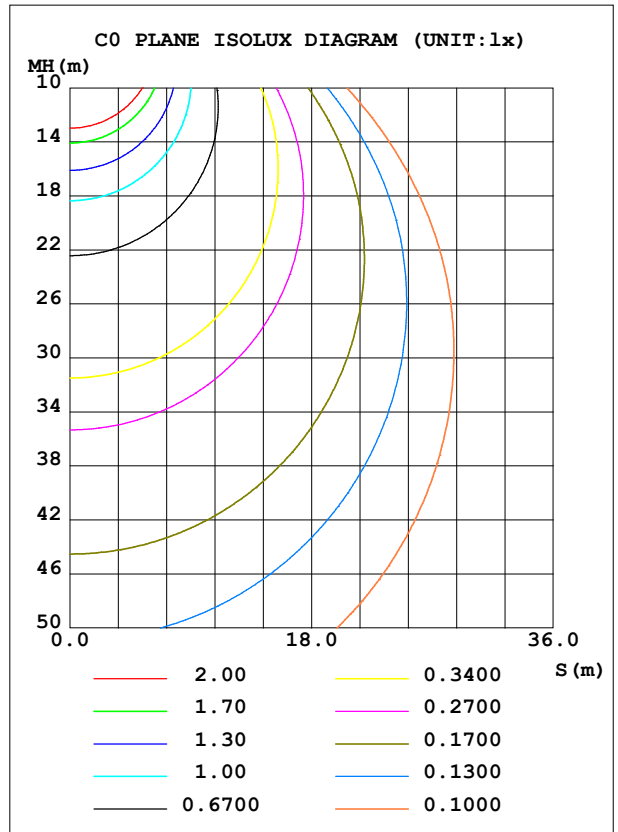
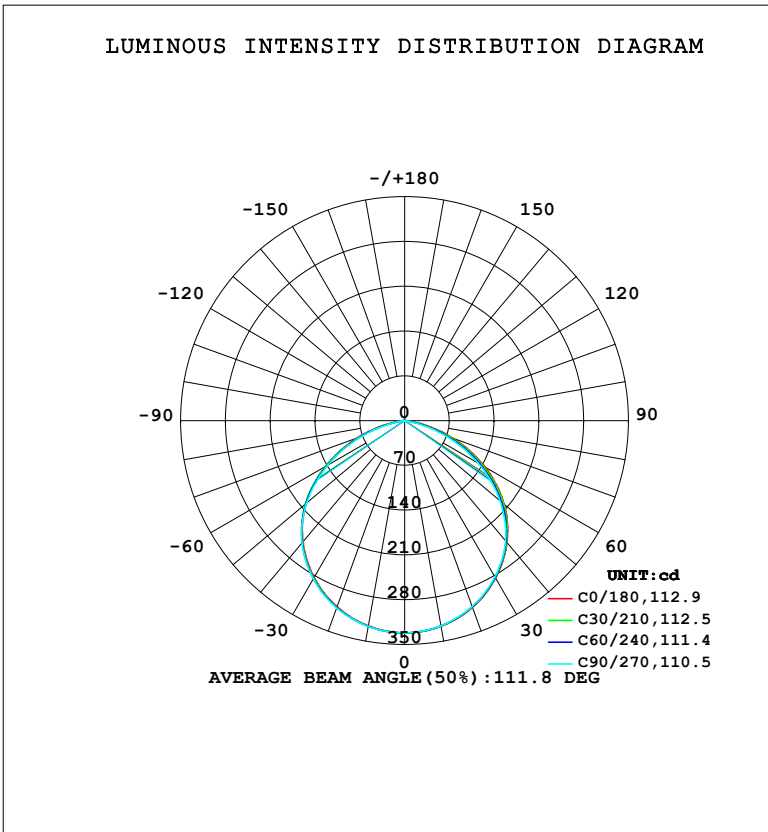


LUMINAIRE PHOTOMETRIC TEST REPORT

Test:U:220.31V I:0.1183A P:11.858W PF:0.4552 Freq:50.00Hz Lamp Flux:906.142x1 lm		
NAME:	TYPE: 面板灯	WEIGHT:
SPEC.:	DIM.:	SERIAL No.:
MFR.: EVERFINE	SUR.: 98mm	Shielding Angle:

DATA OF LAMP		PHOTOMETRIC DATA				Eff: 76.42 lm/W
MODEL	123R	I _{max} (cd)	331.7	S/MH (C0/180)	1.27	
NOMINAL POWER (W)	12	LOR (%)	100.0	S/MH (C90/270)	1.28	
RATED VOLTAGE (V)	220	TOTAL FLUX (lm)	906.14	η UP, DN (C0-180)	0.0, 49.7	
NOMINAL FLUX (lm)	906.142	CIE CLASS	DIRECT	η UP, DN (C180-360)	0.0, 50.3	
LAMPS INSIDE	1	η up (%)	0.0	CIBSE SHR NOM	1.25	
TEST VOLTAGE (V)	219.5	η down (%)	100.0	CIBSE SHR MAX	1.35	



C Range: 0 - 360DEG
 C Interval: 15.0DEG
 Test Speed: HIGH
 Temperature: 25.3°C
 Operators: DAMIN
 Test Date: 2023-12-16

γ Range: 0 - 90DEG
 γ Interval: 1.0DEG
 Test System: EVERFINE GO-2000B_V1 SYSTEM V2.00.473
 Humidity: 65.0%
 Test Distance: 9.401m [K=1.0000]
 Remarks:

ZONAL FLUX DIAGRAM

ZONAL FLUX DIAGRAM:

γ	C0	C45	C90	C135	C180	C225	C270	C315	γ	Φ zone	Φ total	%lum,lamp
10	326.4	326.3	325.7	325.6	325.9	326.2	326.8	326.7	0- 10	31.40	31.40	3.47,3.47
20	310.5	310.3	309.1	309.0	309.6	310.3	311.4	311.1	10- 20	90.19	121.6	13.4,13.4
30	284.4	284.1	282.3	282.4	283.1	284.2	285.6	285.3	20- 30	137.5	259.1	28.6,28.6
40	248.9	248.0	245.5	246.0	247.3	248.5	249.6	249.7	30- 40	167.1	426.2	47,47
50	203.4	200.8	194.4	198.3	201.7	201.6	199.8	202.7	40- 50	173.9	600.1	66.2,66.2
60	144.9	139.8	132.7	137.3	142.9	140.8	138.5	142.0	50- 60	152.8	752.9	83.1,83.1
70	80.59	73.18	65.41	71.07	78.28	74.46	70.66	75.43	60- 70	105.6	858.5	94.7,94.7
80	20.21	11.96	6.623	11.59	18.65	13.84	9.850	13.93	70- 80	44.13	902.7	99.6,99.6
90	0.3852	0.3662	0.3443	0.3638	0.4622	0.4382	0.4107	0.4304	80- 90	3.461	906.1	100,100
100									90-100			
110									100-110			
120									110-120			
130									120-130			
140									130-140			
150									140-150			
160									150-160			
170									160-170			
180									170-180			
DEG	LUMINOUS INTENSITY:cd									UNIT:lm		

Conical surface Flux(90deg): 513.92 lm

%lum = 56.7%

%lamp = 56.7%

Conical surface Flux(130deg): 812.9 lm

%lum = 89.7%

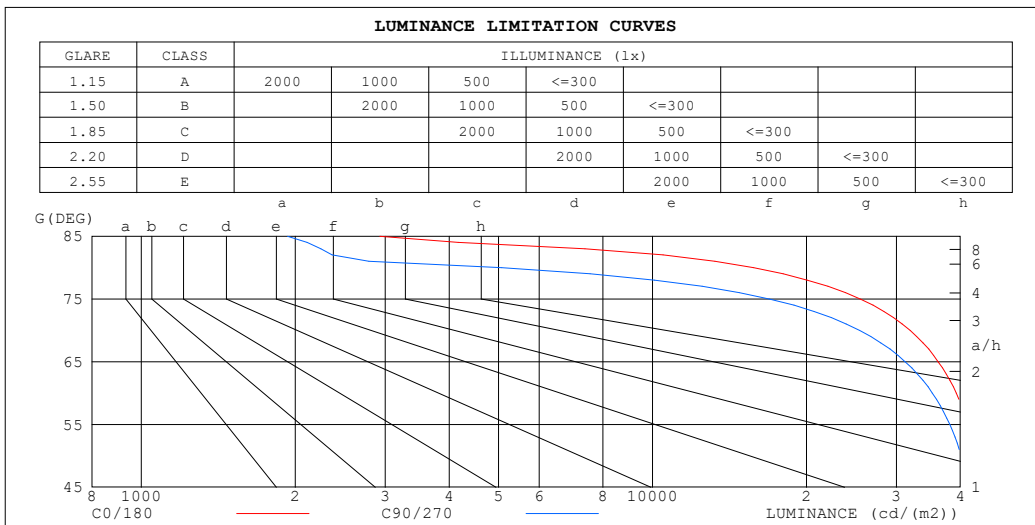
%lamp = 89.7%

C Range: 0 - 360DEG
 C Interval: 15.0DEG
 Test Speed: HIGH
 Temperature:25.3°C
 Operators:DAMIN
 Test Date:2023-12-16

γ Range: 0 - 90DEG
 γ Interval: 1.0DEG
 Test System:EVERFINE GO-2000B_V1 SYSTEM V2.00.473
 Humidity:65.0%
 Test Distance:9.401m [K=1.0000]
 Remarks:

LUMINANCE LIMITATION CURVES

Test:U:220.31V I:0.1183A P:11.858W PF:0.4552 Freq:50.00Hz Lamp Flux:906.142x1 lm		
NAME:	TYPE: 面板灯	WEIGHT:
SPEC.:	DIM.:	SERIAL No.:
MFR.: EVERFINE	SUR.: 98mm	Shielding Angle:



LUMINANCE cd/(m2)		
G (DEG)	C0/180	C90/270
85	2926	1933
80	15772	5069
75	25506	16919
70	31923	25421
65	36209	31203
60	39275	35266
55	41458	38162
50	42867	40194
45	43585	41703

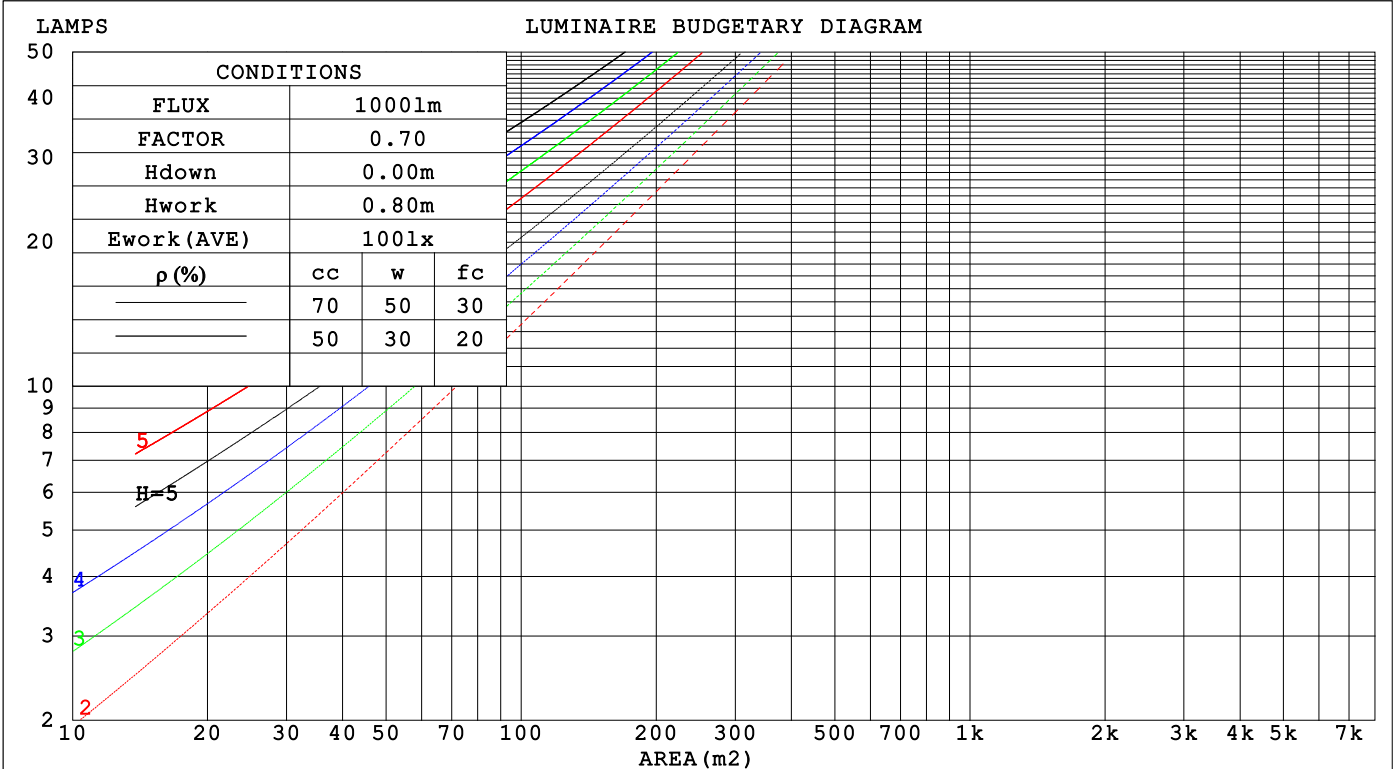
C Range: 0 - 360DEG
 C Interval: 15.0DEG
 Test Speed: HIGH
 Temperature: 25.3°C
 Operators: DAMIN
 Test Date: 2023-12-16

γ Range: 0 - 90DEG
 γ Interval: 1.0DEG
 Test System: EVERFINE GO-2000B_V1 SYSTEM V2.00.473
 Humidity: 65.0%
 Test Distance: 9.401m [K=1.0000]
 Remarks:

CU AND LUMINAIRE BUDGETARY ESTIMATE DIAGRAM

Test:U:220.31V I:0.1183A P:11.858W PF:0.4552 Freq:50.00Hz Lamp Flux:906.142x1 lm		
NAME:	TYPE: 面板灯	WEIGHT:
SPEC.:	DIM.:	SERIAL No.:
MFR.: EVERFINE	SUR.: 98mm	Shielding Angle:

ρcc	80%			70%			50%			30%			10%			0
ρw	50%	30%	10%	50%	30%	10%	50%	30%	10%	50%	30%	10%	50%	30%	10%	0
ρfc	20%			20%			20%			20%			20%			0
RCR	RCR:Room Cavity Ratio															
	Coefficients of Utilization(CU)															
0.0	1.19	1.19	1.19	1.16	1.16	1.16	1.11	1.11	1.11	1.06	1.06	1.06	1.02	1.02	1.02	1.00
1.0	1.05	1.01	.98	1.03	.99	.96	.99	.96	.93	.95	.93	.90	.91	.89	.88	.86
2.0	.92	.86	.80	.90	.85	.79	.87	.82	.78	.84	.80	.76	.81	.77	.74	.72
3.0	.81	.73	.67	.80	.72	.67	.77	.71	.65	.74	.69	.64	.72	.67	.63	.61
4.0	.72	.64	.57	.71	.63	.57	.68	.61	.56	.66	.60	.55	.64	.59	.54	.52
5.0	.64	.56	.49	.63	.55	.49	.61	.54	.48	.59	.53	.48	.57	.52	.47	.45
6.0	.58	.49	.43	.57	.49	.43	.55	.48	.42	.54	.47	.42	.52	.46	.42	.40
7.0	.53	.44	.38	.52	.44	.38	.50	.43	.37	.49	.42	.37	.47	.41	.37	.35
8.0	.48	.40	.34	.47	.39	.34	.46	.39	.33	.45	.38	.33	.44	.38	.33	.31
9.0	.44	.36	.30	.43	.36	.30	.42	.35	.30	.41	.35	.30	.40	.34	.30	.28
10.0	.41	.33	.28	.40	.33	.27	.39	.32	.27	.38	.32	.27	.37	.31	.27	.25



C Range: 0 - 360DEG
 C Interval: 15.0DEG
 Test Speed: HIGH
 Temperature:25.3°C
 Operators:DAMIN
 Test Date:2023-12-16

γ Range: 0 - 90DEG
 γ Interval: 1.0DEG
 Test System:EVERFINE GO-2000B_V1 SYSTEM V2.00.473
 Humidity:65.0%
 Test Distance:9.401m [K=1.0000]
 Remarks:

WEC AND CCEC

Test:U:220.31V I:0.1183A P:11.858W PF:0.4552 Freq:50.00Hz		
Lamp Flux:906.142x1 lm		
NAME:	TYPE: 面板灯	WEIGHT:
SPEC.:	DIM.:	SERIAL No.:
MFR.: EVERFINE	SUR.: 98mm	Shielding Angle:

ρ_{CC}	80%			70%			50%			30%			10%			0
ρ_w	50%	30%	10%	50%	30%	10%	50%	30%	10%	50%	30%	10%	50%	30%	10%	0
ρ_{fc}	20%			20%			20%			20%			20%			0
RCR	RCR:Room Cavity Ratio						Wall Exitance Coefficients (WEC)									
0.0																
1.0	.282	.161	.051	.275	.157	.050	.262	.150	.048	.250	.144	.046	.239	.139	.045	
2.0	.274	.150	.046	.268	.147	.045	.256	.142	.044	.246	.138	.043	.236	.133	.042	
3.0	.258	.137	.041	.252	.135	.041	.242	.131	.040	.233	.127	.039	.224	.124	.038	
4.0	.240	.125	.037	.235	.123	.036	.226	.120	.036	.218	.117	.035	.210	.114	.035	
5.0	.224	.114	.033	.220	.113	.033	.211	.110	.032	.204	.108	.032	.197	.105	.032	
6.0	.209	.105	.030	.205	.103	.030	.198	.101	.029	.191	.099	.029	.185	.097	.029	
7.0	.195	.096	.027	.192	.095	.027	.185	.094	.027	.179	.092	.027	.173	.090	.026	
8.0	.183	.089	.025	.180	.088	.025	.174	.087	.025	.168	.085	.025	.163	.084	.024	
9.0	.172	.083	.023	.169	.082	.023	.164	.081	.023	.159	.080	.023	.154	.078	.023	
10.0	.162	.077	.022	.159	.077	.021	.154	.076	.021	.150	.075	.021	.146	.073	.021	

ρ_{CC}	80%			70%			50%			30%			10%			0
ρ_w	50%	30%	10%	50%	30%	10%	50%	30%	10%	50%	30%	10%	50%	30%	10%	0
ρ_{fc}	20%			20%			20%			20%			20%			0
RCR	RCR:Room Cavity Ratio						Ceiling Cavity Exitance Coefficients (CCEC)									
0.0	.190	.190	.190	.163	.163	.163	.111	.111	.111	.064	.064	.064	.020	.020	.020	
1.0	.178	.156	.137	.153	.134	.118	.104	.092	.081	.060	.053	.047	.019	.017	.015	
2.0	.170	.132	.100	.145	.114	.087	.100	.079	.060	.057	.046	.035	.018	.015	.012	
3.0	.162	.114	.076	.139	.099	.066	.095	.068	.046	.055	.040	.027	.018	.013	.009	
4.0	.155	.101	.060	.133	.087	.052	.091	.061	.036	.053	.036	.022	.017	.012	.007	
5.0	.147	.090	.048	.127	.078	.042	.087	.055	.030	.051	.032	.018	.016	.010	.006	
6.0	.141	.082	.040	.121	.071	.035	.083	.050	.025	.048	.029	.015	.016	.010	.005	
7.0	.134	.075	.034	.115	.065	.029	.080	.046	.021	.046	.027	.012	.015	.009	.004	
8.0	.128	.069	.029	.110	.060	.025	.076	.042	.018	.044	.025	.011	.014	.008	.004	
9.0	.122	.064	.025	.105	.056	.022	.073	.039	.016	.042	.023	.009	.014	.008	.003	
10.0	.116	.060	.023	.100	.052	.020	.069	.037	.014	.041	.022	.008	.013	.007	.003	

C Range: 0 - 360DEG
 C Interval: 15.0DEG
 Test Speed: HIGH
 Temperature:25.3°C
 Operators:DAMIN
 Test Date:2023-12-16

γ Range: 0 - 90DEG
 γ Interval: 1.0DEG
 Test System:EVERFINE GO-2000B_V1 SYSTEM V2.00.473
 Humidity:65.0%
 Test Distance:9.401m [K=1.0000]
 Remarks:

UGR(Unified Glare Rating) Table

Test:U:220.31V I:0.1183A P:11.858W PF:0.4552 Freq:50.00Hz										
Lamp Flux:906.142x1 lm										
NAME:		TYPE: 面板灯				WEIGHT:				
SPEC.:		DIM.:				SERIAL No.:				
MFR.: EVERFINE		SUR.: 98mm				Shielding Angle:				
ceiling/cavity	0.7	0.7	0.5	0.5	0.3	0.7	0.7	0.5	0.5	0.3
walls	0.5	0.3	0.5	0.3	0.3	0.5	0.3	0.5	0.3	0.3
working plane	0.2	0.2	0.2	0.2	0.2	0.2	0.2	0.2	0.2	0.2
Room dimensions	Viewed crosswise					Viewed endwise				
x = 2H y = 2H	26.3	27.8	26.5	28.0	28.2	25.9	27.4	26.1	27.6	27.8
3H	27.5	28.9	27.8	29.1	29.4	26.9	28.3	27.2	28.5	28.7
4H	27.9	29.2	28.2	29.5	29.7	27.1	28.4	27.4	28.7	28.9
6H	28.1	29.3	28.4	29.6	29.8	27.1	28.3	27.4	28.6	28.9
8H	28.1	29.2	28.4	29.5	29.8	27.1	28.2	27.4	28.5	28.8
12H	28.0	29.1	28.4	29.4	29.7	27.0	28.1	27.4	28.4	28.7
4H 2H	26.8	28.1	27.1	28.3	28.6	26.4	27.7	26.7	28.0	28.2
3H	28.2	29.3	28.5	29.6	29.9	27.6	28.7	27.9	29.0	29.3
4H	28.6	29.6	29.0	30.0	30.3	27.9	28.9	28.2	29.2	29.5
6H	28.8	29.7	29.2	30.1	30.4	27.9	28.8	28.3	29.1	29.5
8H	28.8	29.7	29.2	30.0	30.4	27.8	28.7	28.3	29.1	29.4
12H	28.8	29.5	29.2	29.9	30.3	27.8	28.6	28.2	29.0	29.4
8H 4H	28.7	29.5	29.1	29.9	30.3	28.0	28.8	28.4	29.2	29.6
6H	28.9	29.6	29.4	30.0	30.4	28.0	28.7	28.5	29.1	29.5
8H	28.9	29.5	29.4	30.0	30.4	28.0	28.6	28.4	29.0	29.5
12H	28.9	29.4	29.4	29.9	30.3	28.0	28.5	28.4	28.9	29.4
12H 4H	28.6	29.4	29.1	29.8	30.2	28.0	28.7	28.4	29.1	29.5
6H	28.9	29.5	29.3	29.9	30.4	28.0	28.6	28.5	29.0	29.5
8H	28.9	29.4	29.4	29.9	30.3	28.0	28.5	28.4	28.9	29.4
Variations with the observer position at spacings(CIE Pub.117):										
S = 1.0H	+ 0.2 / - 0.3					+ 0.3 / - 0.4				
1.5H	+ 0.2 / - 0.4					+ 0.3 / - 0.5				
2.0H	+ 0.4 / - 0.4					+ 0.4 / - 0.5				

CIE Pub.117, 906.1 lm Total Lamp Luminous Flux Correct (8log(F/F0) = -0.3)
 Area: 0.0075 m2

C Range: 0 - 360DEG
 C Interval: 15.0DEG
 Test Speed: HIGH
 Temperature:25.3°C
 Operators:DAMIN
 Test Date:2023-12-16

γ Range: 0 - 90DEG
 γ Interval: 1.0DEG
 Test System:EVERFINE GO-2000B_V1 SYSTEM V2.00.473
 Humidity:65.0%
 Test Distance:9.401m [K=1.0000]
 Remarks:

UTILIZATION FACTORS TABLE

Test:U:220.31V I:0.1183A P:11.858W PF:0.4552 Freq:50.00Hz Lamp Flux:906.142x1 lm		
NAME:	TYPE: 面板灯	WEIGHT:
SPEC.:	DIM.:	SERIAL No.:
MFR.: EVERFINE	SUR.: 98mm	Shielding Angle:

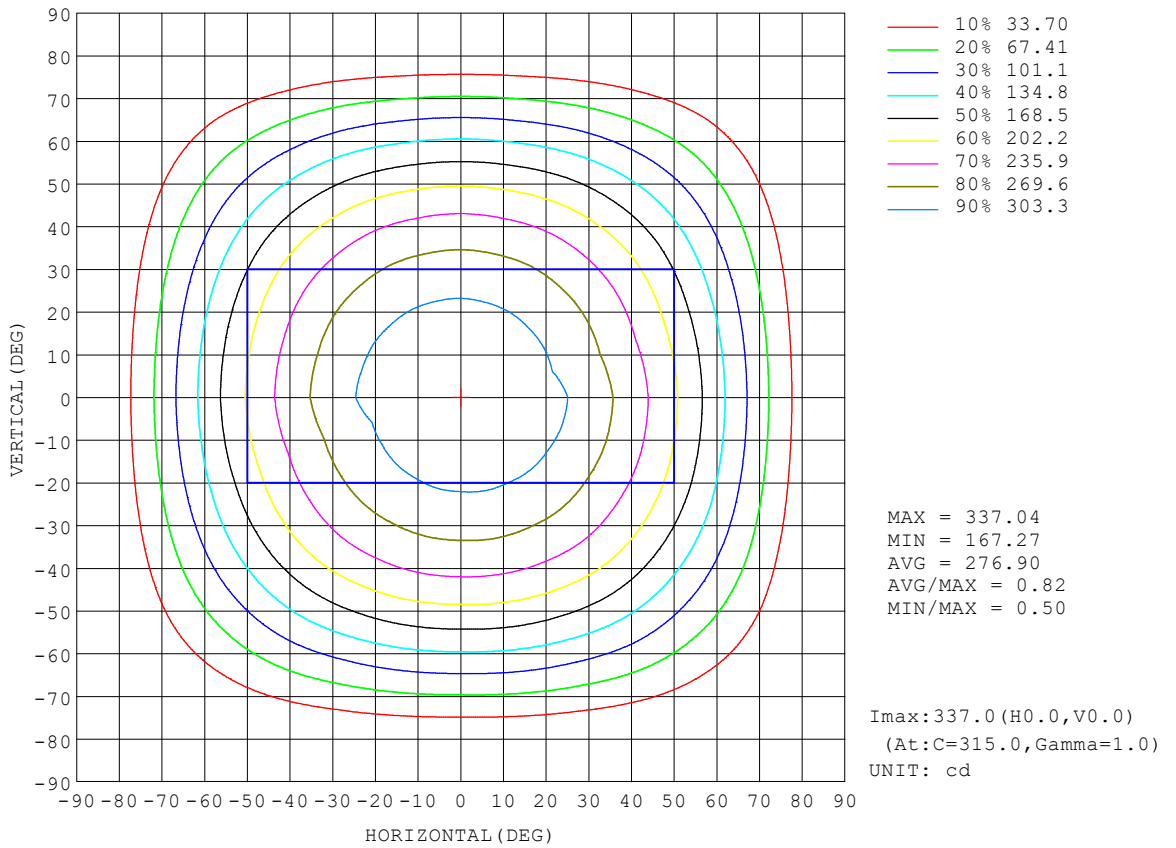
REFLECTANCE										
Ceiling	0.8	0.8	0.8	0.7	0.7	0.7	0.5	0.5	0.5	0
Walls	0.7	0.5	0.3	0.7	0.5	0.3	0.7	0.5	0.3	0
Working plane	0.2	0.2	0.2	0.2	0.2	0.2	0.2	0.2	0.2	0
ROOM INDEX	UTILIZATION FACTORS (PERCENT) $k(RI) \times RCR = 5$									
k = 0.60	59	47	40	58	47	40	57	46	40	34
0.80	69	58	50	68	57	50	66	56	50	43
1.00	78	67	60	76	66	60	74	68	59	52
1.25	85	75	68	83	74	68	81	73	67	60
1.50	90	80	74	88	80	73	85	78	72	65
2.00	97	89	83	95	87	82	91	85	80	73
2.50	100	93	87	98	92	87	95	89	85	77
3.00	104	97	92	102	96	91	98	93	89	81
4.00	107	102	98	105	100	97	101	97	94	85
5.00	110	105	102	107	103	100	103	100	97	88
ROOM INDEX	UF(total)									Direct
According to DIN EN 13032-2 2004			Suspended				SHRNOM = 1.25			

C Range: 0 - 360DEG
 C Interval: 15.0DEG
 Test Speed: HIGH
 Temperature:25.3°C
 Operators:DAMIN
 Test Date:2023-12-16

γ Range: 0 - 90DEG
 γ Interval: 1.0DEG
 Test System:EVERFINE GO-2000B_V1 SYSTEM V2.00.473
 Humidity:65.0%
 Test Distance:9.401m [K=1.0000]
 Remarks:

ISOCANDELA DIAGRAM

Test:U:220.31V I:0.1183A P:11.858W PF:0.4552 Freq:50.00Hz Lamp Flux:906.142x1 lm		
NAME:	TYPE: 面板灯	WEIGHT:
SPEC.:	DIM.:	SERIAL No.:
MFR.: EVERFINE	SUR.: 98mm	Shielding Angle:

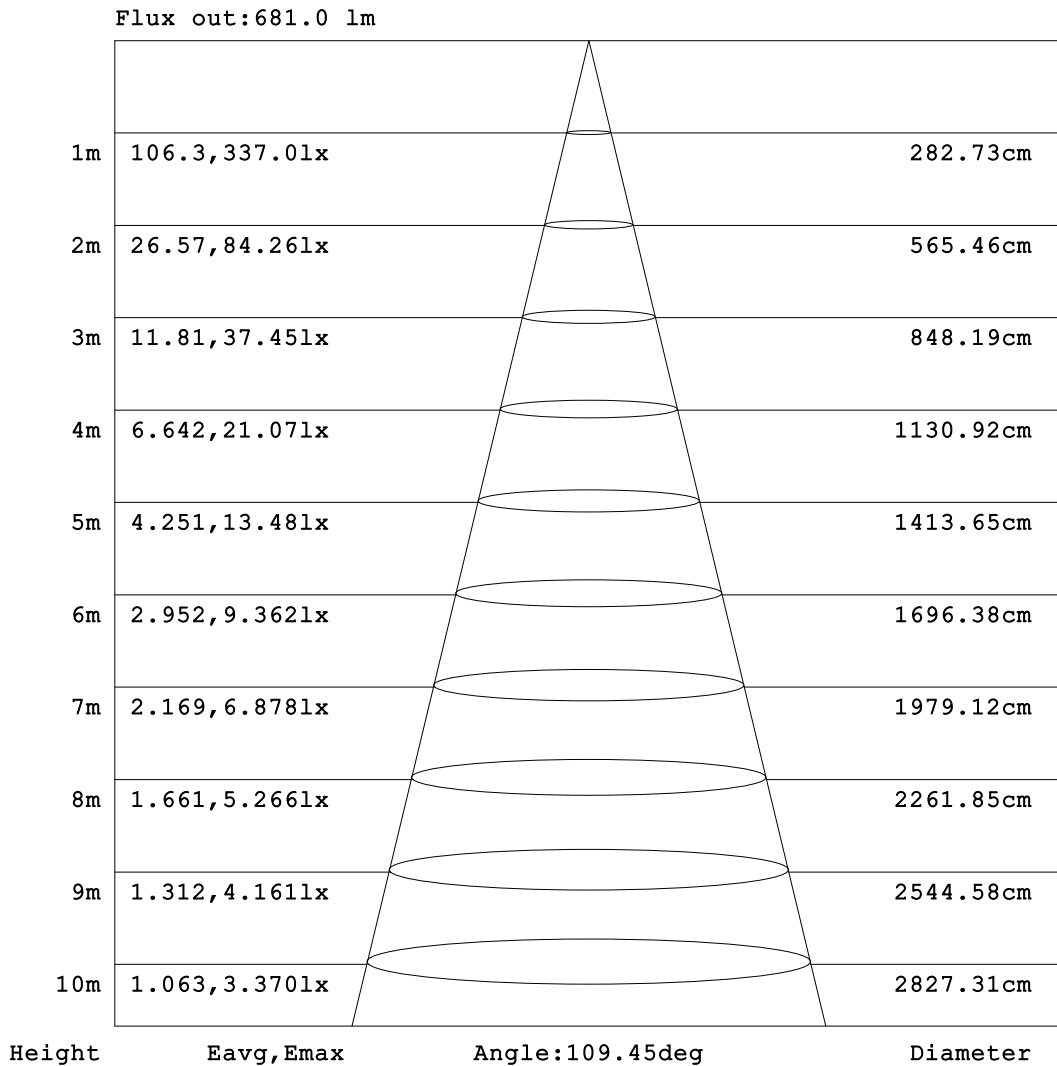


C Range: 0 - 360DEG
 C Interval: 15.0DEG
 Test Speed: HIGH
 Temperature:25.3°C
 Operators:DAMIN
 Test Date:2023-12-16

γ Range: 0 - 90DEG
 γ Interval: 1.0DEG
 Test System:EVERFINE GO-2000B_V1 SYSTEM V2.00.473
 Humidity:65.0%
 Test Distance:9.401m [K=1.0000]
 Remarks:

AAI Figure

Test:U:220.31V I:0.1183A P:11.858W PF:0.4552 Freq:50.00Hz Lamp Flux:906.142x1 lm		
NAME:	TYPE: 面板灯	WEIGHT:
SPEC.:	DIM.:	SERIAL No.:
MFR.: EVERFINE	SUR.: 98mm	Shielding Angle:



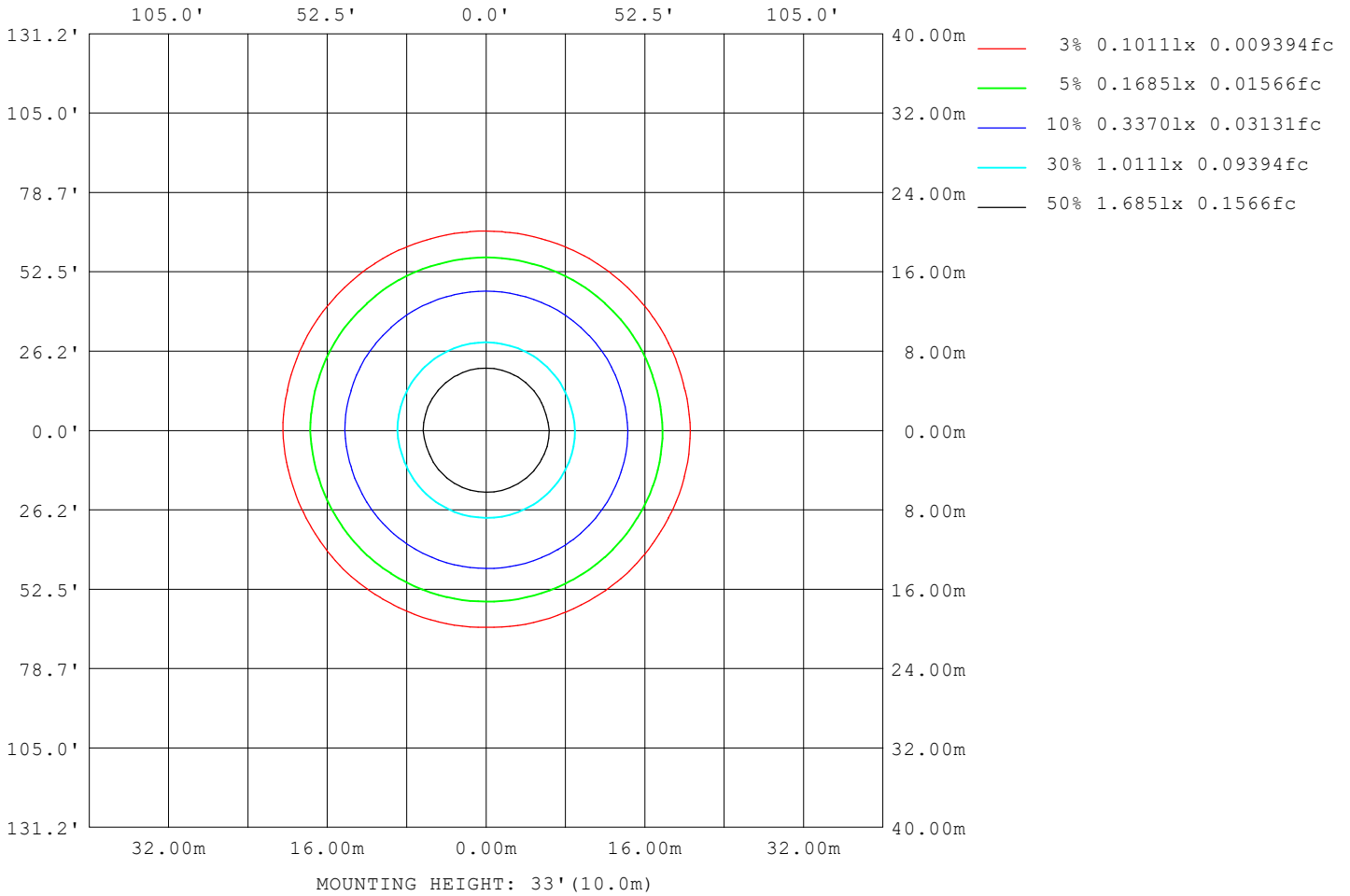
Note:The Curves indicate the illuminated area and the average illumination when the luminaire is at different distance.

C Range: 0 - 360DEG
C Interval: 15.0DEG
Test Speed: HIGH
Temperature:25.3°C
Operators:DAMIN
Test Date:2023-12-16

γ Range: 0 - 90DEG
γ Interval: 1.0DEG
Test System:EVERFINE GO-2000B_V1 SYSTEM V2.00.473
Humidity:65.0%
Test Distance:9.401m [K=1.0000]
Remarks:

ISOLUX DIAGRAM

Test:U:220.31V I:0.1183A P:11.858W PF:0.4552 Freq:50.00Hz Lamp Flux:906.142x1 lm		
NAME:	TYPE: 面板灯	WEIGHT:
SPEC.:	DIM.:	SERIAL No.:
MFR.: EVERFINE	SUR.: 98mm	Shielding Angle:



C Range: 0 - 360DEG
C Interval: 15.0DEG
Test Speed: HIGH
Temperature:25.3°C
Operators:DAMIN
Test Date:2023-12-16

γ Range: 0 - 90DEG
γ Interval: 1.0DEG
Test System:EVERFINE GO-2000B_V1 SYSTEM V2.00.473
Humidity:65.0%
Test Distance:9.401m [K=1.0000]
Remarks:

LED Avg.L Report

Test:U:220.31V I:0.1183A P:11.858W PF:0.4552 Freq:50.00Hz Lamp Flux:906.142x1 lm		
NAME:	TYPE: 面板灯	WEIGHT:
SPEC.:	DIM.:	SERIAL No.:
MFR.: EVERFINE	SUR.: 98mm	Shielding Angle:

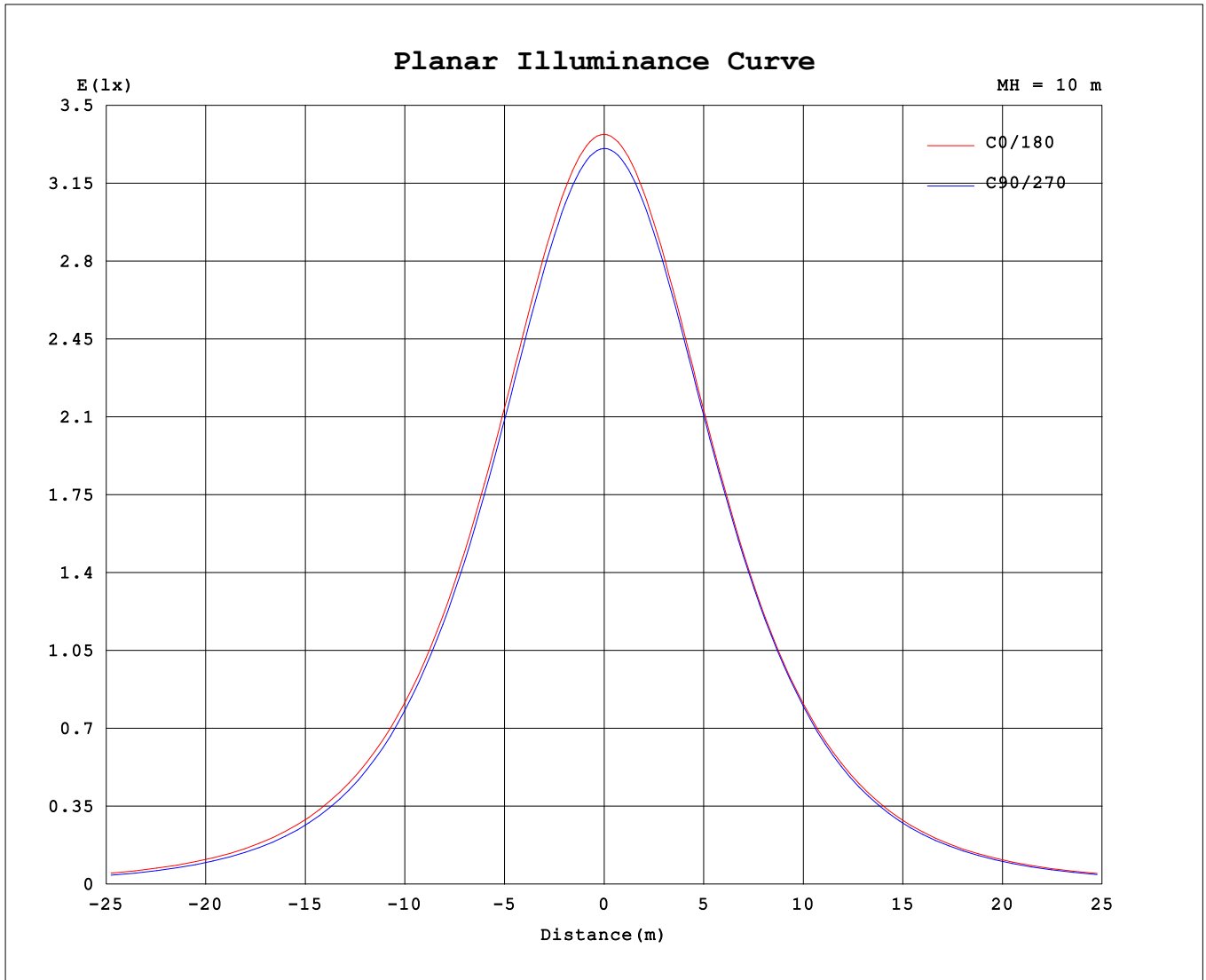
AvgL	cd/m2
L_0~180 (65) av	35296
L_0~180 (75) av	24619
L_0~180 (85) av	2869
L_90~270 (65) av	32193
L_90~270 (75) av	18186
L_90~270 (85) av	2227
L_45 (65) av	33783
L_45 (75) av	21158
L_45 (85) av	2420

Standard: GB/T 29293-2012

C Range: 0 - 360DEG
 C Interval: 15.0DEG
 Test Speed: HIGH
 Temperature:25.3℃
 Operators:DAMIN
 Test Date:2023-12-16

γ Range: 0 - 90DEG
 γ Interval: 1.0DEG
 Test System:EVERFINE GO-2000B_V1 SYSTEM V2.00.473
 Humidity:65.0%
 Test Distance:9.401m [K=1.0000]
 Remarks:

Planar Illuminance Curve



C Range: 0 - 360DEG
 C Interval: 15.0DEG
 Test Speed: HIGH
 Temperature: 25.3°C
 Operators: DAMIN
 Test Date: 2023-12-16

γ Range: 0 - 90DEG
 γ Interval: 1.0DEG
 Test System: EVERFINE GO-2000B_V1 SYSTEM V2.00.473
 Humidity: 65.0%
 Test Distance: 9.401m [K=1.0000]
 Remarks:

LUMINOUS DISTRIBUTION INTENSITY DATA

Test:U:220.31V I:0.1183A P:11.858W PF:0.4552 Freq:50.00Hz		
Lamp Flux:906.142x1 lm		
NAME :	TYPE: 面板灯	WEIGHT:
SPEC. :	DIM. :	SERIAL No. :
MFR. : EVERFINE	SUR. : 98mm	Shielding Angle:

Table--1

UNIT: cd

C (DEG)\ γ (DEG)	0	15	30	45	60	75	90	105	120	135	150	165	180	195	210	225	240	255	270
0	332	332	332	332	332	332	332	332	332	332	332	332	332	332	332	332	332	332	332
5	330	331	330	330	330	330	330	330	330	330	330	330	330	330	330	330	330	330	331
10	326	327	326	326	326	326	326	326	325	326	325	326	326	326	326	326	327	327	327
15	320	320	319	320	319	319	319	319	318	319	318	319	319	319	320	320	320	320	320
20	311	311	310	310	310	310	309	309	309	309	309	309	310	309	310	310	311	311	311
25	299	299	298	298	298	298	297	297	297	297	297	297	298	297	298	298	299	299	300
30	284	285	284	284	283	283	282	282	282	282	282	283	283	283	284	284	285	285	286
35	268	268	267	267	266	266	265	265	265	265	265	266	266	266	267	267	268	268	269
40	249	249	248	248	247	247	246	246	245	246	246	247	247	247	248	248	249	249	250
45	227	228	226	226	224	223	222	223	222	224	224	225	226	226	227	227	227	226	227
50	203	204	202	201	198	196	194	195	196	198	199	201	202	202	203	202	201	200	200
55	176	176	173	171	168	167	165	165	166	169	170	173	174	173	174	172	172	170	170
60	145	145	142	140	136	135	133	134	134	137	139	142	143	143	143	141	140	138	138
65	113	113	109	107	103	101	99.2	100	101	104	106	109	111	110	110	108	107	105	105
70	80.6	79.6	75.7	73.2	69.2	67.3	65.4	66.4	67.7	71.1	73.2	76.5	78.3	77.5	76.8	74.5	73.0	70.7	70.7
75	48.7	47.4	43.3	40.4	36.5	34.6	32.9	34.1	35.7	39.1	41.4	44.9	46.9	45.8	44.6	42.0	40.3	38.0	37.7
80	20.2	18.6	14.8	12.0	8.47	7.79	6.62	7.43	8.66	11.6	14.1	17.2	18.7	17.9	16.6	13.8	12.1	10.1	9.85
85	1.88	1.77	1.60	1.41	1.30	1.23	1.27	1.25	1.32	1.39	1.58	1.74	1.87	1.97	1.87	1.79	1.70	1.69	1.64
90	0.39	0.39	0.38	0.37	0.36	0.35	0.34	0.34	0.36	0.36	0.38	0.46	0.46	0.59	0.45	0.44	0.43	0.43	0.41

C Range: 0 - 360DEG
C Interval: 15.0DEG
Test Speed: HIGH
Temperature: 25.3°C
Operators: DAMIN
Test Date: 2023-12-16
γ Range: 0 - 90DEG
γ Interval: 1.0DEG
Test System: EVERFINE GO-2000B_V1 SYSTEM V2.00.473
Humidity: 65.0%
Test Distance: 9.401m [K=1.0000]
Remarks:

LUMINOUS DISTRIBUTION INTENSITY DATA

Test:U:220.31V I:0.1183A P:11.858W PF:0.4552 Freq:50.00Hz Lamp Flux:906.142x1 lm		
NAME:	TYPE: 面板灯	WEIGHT:
SPEC.:	DIM.:	SERIAL No.:
MFR.: EVERFINE	SUR.: 98mm	Shielding Angle:

Table--2

UNIT: cd

C (DEG) γ (DEG)	285	300	315	330	345														
0	332	332	332	332	332														
5	331	331	331	331	330														
10	327	327	327	327	327														
15	320	320	320	320	320														
20	311	312	311	311	311														
25	300	300	300	300	299														
30	285	286	285	285	285														
35	269	269	269	269	268														
40	249	250	250	250	249														
45	227	228	228	229	228														
50	200	202	203	204	204														
55	170	173	174	176	176														
60	138	141	142	144	145														
65	105	107	109	111	113														
70	70.9	73.4	75.4	78.3	79.9														
75	38.1	40.7	42.8	45.9	47.9														
80	10.1	12.0	13.9	17.1	19.2														
85	1.66	1.65	1.74	1.80	1.92														
90	0.42	0.41	0.43	0.42	0.46														

C Range: 0 - 360DEG
 C Interval: 15.0DEG
 Test Speed: HIGH
 Temperature:25.3℃
 Operators:DAMIN
 Test Date:2023-12-16

γ Range: 0 - 90DEG
 γ Interval: 1.0DEG
 Test System:EVERFINE GO-2000B_V1 SYSTEM V2.00.473
 Humidity:65.0%
 Test Distance:9.401m [K=1.0000]
 Remarks: