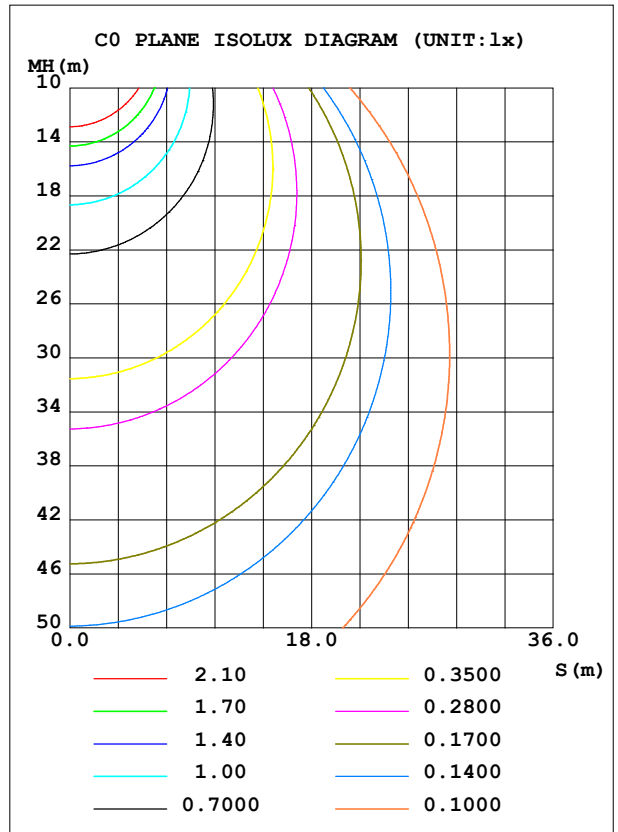
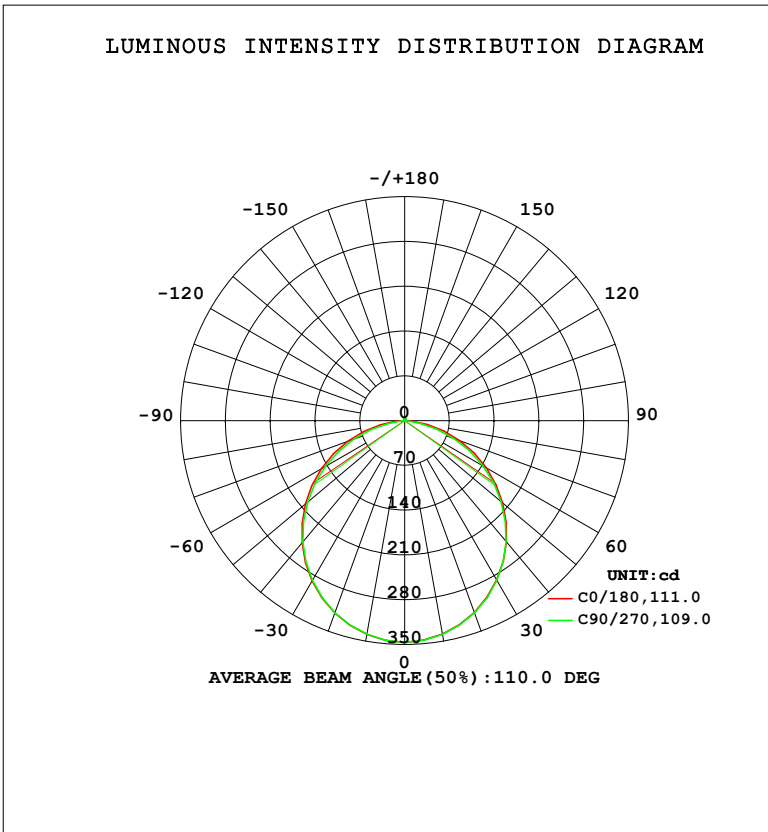


**LUMINAIRE PHOTOMETRIC TEST REPORT**

Test:U:220.38V I:0.0861A P:10.109W PF:0.5330 Freq:50.00Hz Lamp Flux:962.323x1 lm		
NAME: HYD	TYPE: 116	WEIGHT:
SPEC.:	DIM.:	SERIAL No.:
MFR.: EVERFINE	SUR.: 1	Shielding Angle:

DATA OF LAMP		PHOTOMETRIC DATA				Eff: 95.19 lm/W
MODEL	116C	I <sub>max</sub> (cd)	346.5	S/MH (C0/180)	1.24	
NOMINAL POWER (W)	10	LOR (%)	100.0	S/MH (C90/270)	1.24	
RATED VOLTAGE (V)	220	TOTAL FLUX (lm)	962.32	η UP, DN (C0-180)	0.5,49.4	
NOMINAL FLUX (lm)	962.323	CIE CLASS	DIRECT	η UP, DN (C180-360)	0.5,49.6	
LAMPS INSIDE	1	η up (%)	1.0	CIBSE SHR NOM	1.25	
TEST VOLTAGE (V)	219.5	η down (%)	99.0	CIBSE SHR MAX	1.35	



C Range: 0 - 360DEG  
 C Interval: 22.5DEG  
 Test Speed: HIGH  
 Temperature: 25.3°C  
 Operators: DAMIN  
 Test Date: 2023-11-18

γ Range: 0 - 180DEG  
 γ Interval: 5.0DEG  
 Test System: EVERFINE GO-2000B\_V1 SYSTEM V2.00.473  
 Humidity: 65.0%  
 Test Distance: 9.401m [K=1.0000]  
 Remarks:

ZONAL FLUX DIAGRAM

ZONAL FLUX DIAGRAM:

γ	C0	C45	C90	C135	C180	C225	C270	C315	γ	Φ zone	Φ total	%lum,lamp
10	338.9	338.9	339.2	339.3	339.3	339.2	339.1	339.0	0- 10	32.71	32.71	3.4,3.4
20	318.8	319.1	319.5	319.8	319.8	319.6	319.4	319.1	10- 20	93.31	126.0	13.1,13.1
30	287.7	288.2	288.5	289.1	289.3	288.9	288.5	288.0	20- 30	140.7	266.7	27.7,27.7
40	247.6	247.5	246.7	248.7	249.6	248.8	247.6	247.7	30- 40	168.5	435.2	45.2,45.2
50	200.3	198.8	196.9	200.4	202.7	200.8	198.1	199.5	40- 50	173.3	608.5	63.2,63.2
60	147.5	144.0	141.3	145.9	150.4	146.6	142.9	145.2	50- 60	154.7	763.2	79.3,79.3
70	91.51	85.74	82.24	87.91	94.65	88.57	84.12	87.27	60- 70	115.5	878.7	91.3,91.3
80	36.22	28.30	24.35	30.43	39.04	31.06	26.32	30.38	70- 80	62.13	940.9	97.8,97.8
90	0.4908	0.4523	0.4349	0.4540	0.5576	0.5356	0.5067	0.5375	80- 90	12.18	953.0	99,99
100	0.6769	0.6614	0.6449	0.6637	0.8214	0.8064	0.7900	0.8153	90-100	0.6996	953.7	99.1,99.1
110	0.9944	0.9741	0.9581	0.9655	1.157	1.131	1.128	1.147	100-110	0.9421	954.7	99.2,99.2
120	1.324	1.317	1.308	1.304	1.517	1.486	1.489	1.497	110-120	1.219	955.9	99.3,99.3
130	1.666	1.636	1.645	1.630	1.846	1.805	1.833	1.830	120-130	1.406	957.3	99.5,99.5
140	1.965	1.961	1.965	1.937	2.146	2.112	2.134	2.113	130-140	1.458	958.8	99.6,99.6
150	2.277	2.249	2.266	2.239	2.415	2.370	2.393	2.397	140-150	1.369	960.1	99.8,99.8
160	2.547	2.550	2.556	2.529	2.673	2.647	2.671	2.644	150-160	1.136	961.3	99.9,99.9
170	2.799	2.809	2.797	2.789	2.895	2.869	2.876	2.868	160-170	0.7694	962.0	100,100
180	2.949	2.984	2.954	2.958	2.961	2.990	2.960	2.964	170-180	0.2768	962.3	100,100
DEG	LUMINOUS INTENSITY:cd									UNIT:lm		

Conical surface Flux(90deg): 522.71 lm

%lum = 54.3%

%lamp = 54.3%

Conical surface Flux(130deg): 826.96 lm

%lum = 85.9%

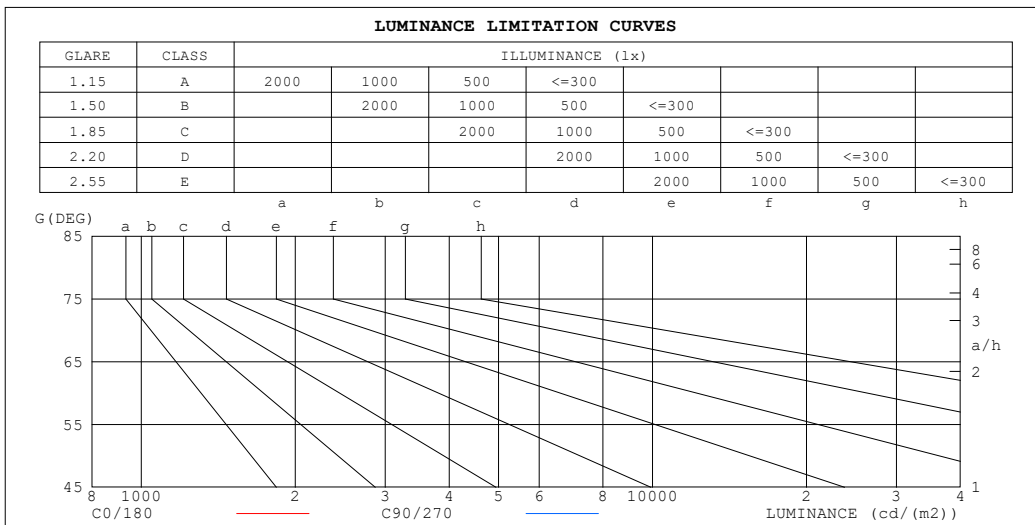
%lamp = 85.9%

C Range: 0 - 360DEG  
 C Interval: 22.5DEG  
 Test Speed: HIGH  
 Temperature:25.3°C  
 Operators:DAMIN  
 Test Date:2023-11-18

γ Range: 0 - 180DEG  
 γ Interval: 5.0DEG  
 Test System:EVERFINE GO-2000B\_V1 SYSTEM V2.00.473  
 Humidity:65.0%  
 Test Distance:9.401m [K=1.0000]  
 Remarks:

**LUMINANCE LIMITATION CURVES**

Test:U:220.38V I:0.0861A P:10.109W PF:0.5330 Freq:50.00Hz Lamp Flux:962.323x1 lm		
NAME: HYD	TYPE: 116	WEIGHT:
SPEC.:	DIM.:	SERIAL No.:
MFR.: EVERFINE	SUR.: 1	Shielding Angle:



LUMINANCE cd/(m2)		
G (DEG)	C0/180	C90/270
85	148	28
80	210	140
75	245	203
70	269	240
65	285	265
60	296	282
55	306	296
50	313	306
45	319	315

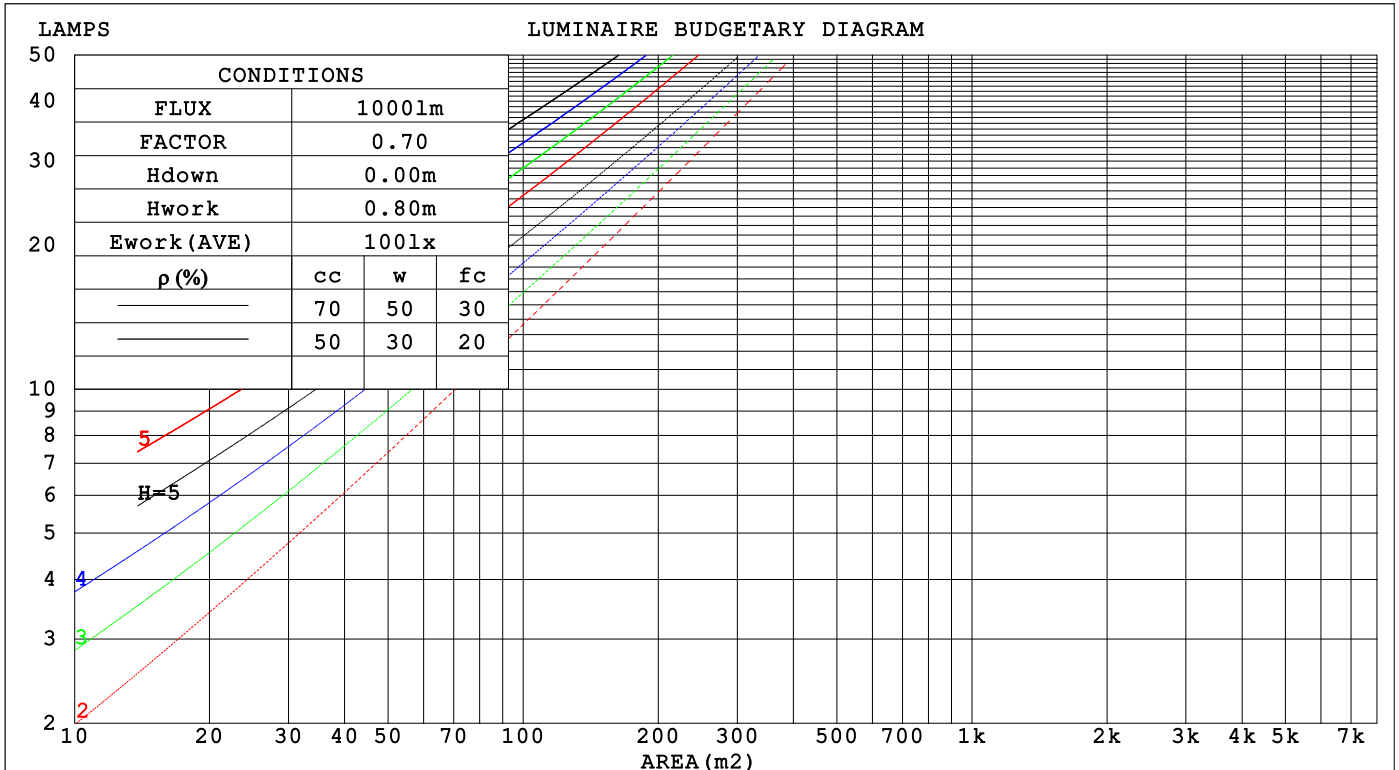
C Range: 0 - 360DEG  
 C Interval: 22.5DEG  
 Test Speed: HIGH  
 Temperature:25.3°C  
 Operators:DAMIN  
 Test Date:2023-11-18

γ Range: 0 - 180DEG  
 γ Interval: 5.0DEG  
 Test System:EVERFINE GO-2000B\_V1 SYSTEM V2.00.473  
 Humidity:65.0%  
 Test Distance:9.401m [K=1.0000]  
 Remarks:

**CU AND LUMINAIRE BUDGETARY ESTIMATE DIAGRAM**

Test:U:220.38V I:0.0861A P:10.109W PF:0.5330 Freq:50.00Hz Lamp Flux:962.323x1 lm		
NAME: HYD	TYPE: 116	WEIGHT:
SPEC.:	DIM.:	SERIAL No.:
MFR.: EVERFINE	SUR.: 1	Shielding Angle:

ρcc	80%			70%			50%			30%			10%			0
	ρw	50%	30%	10%	50%	30%	10%	50%	30%	10%	50%	30%	10%	50%	30%	
ρfc	20%			20%			20%			20%			20%			0
RCR	RCR:Room Cavity Ratio															
	Coefficients of Utilization(CU)															
0.0	1.19	1.19	1.19	1.16	1.16	1.16	1.11	1.11	1.11	1.06	1.06	1.06	1.01	1.01	1.01	.99
1.0	1.04	.90	.96	1.02	.98	.95	.97	.94	.91	.93	.91	.88	.90	.88	.86	.84
2.0	.91	.84	.79	.89	.83	.78	.85	.80	.76	.82	.77	.74	.79	.75	.72	.70
3.0	.80	.72	.65	.78	.71	.65	.75	.69	.63	.72	.67	.62	.70	.65	.61	.59
4.0	.71	.62	.55	.69	.61	.55	.67	.60	.54	.64	.58	.53	.62	.57	.52	.50
5.0	.63	.54	.48	.62	.54	.47	.60	.52	.47	.58	.51	.46	.56	.50	.46	.43
6.0	.57	.48	.42	.56	.48	.41	.54	.47	.41	.52	.46	.41	.51	.45	.40	.38
7.0	.52	.43	.37	.51	.42	.37	.49	.42	.36	.48	.41	.36	.46	.40	.36	.34
8.0	.47	.39	.33	.46	.38	.33	.45	.38	.32	.44	.37	.32	.42	.36	.32	.30
9.0	.43	.35	.30	.43	.35	.29	.41	.34	.29	.40	.34	.29	.39	.33	.29	.27
10.0	.40	.32	.27	.39	.32	.27	.38	.31	.27	.37	.31	.26	.36	.30	.26	.24



C Range: 0 - 360DEG  
 C Interval: 22.5DEG  
 Test Speed: HIGH  
 Temperature:25.3°C  
 Operators:DAMIN  
 Test Date:2023-11-18

γ Range: 0 - 180DEG  
 γ Interval: 5.0DEG  
 Test System:EVERFINE GO-2000B\_V1 SYSTEM V2.00.473  
 Humidity:65.0%  
 Test Distance:9.401m [K=1.0000]  
 Remarks:

**WEC AND CCEC**

Test:U:220.38V I:0.0861A P:10.109W PF:0.5330 Freq:50.00Hz								
Lamp Flux:962.323x1 lm								
NAME: HYD			TYPE: 116			WEIGHT:		
SPEC.:			DIM.:			SERIAL No.:		
MFR.: EVERFINE			SUR.: 1			Shielding Angle:		

$\rho_{CC}$	80%			70%			50%			30%			10%			0
$\rho_w$	50%	30%	10%	50%	30%	10%	50%	30%	10%	50%	30%	10%	50%	30%	10%	0
$\rho_{fc}$	20%			20%			20%			20%			20%			0
RCR	RCR:Room Cavity Ratio						Wall Exitance Coefficients (WEC)									
0.0																
1.0	.300	.171	.054	.292	.167	.053	.279	.160	.051	.266	.153	.049	.254	.147	.048	
2.0	.285	.156	.048	.279	.154	.047	.267	.148	.046	.255	.143	.045	.245	.139	.044	
3.0	.265	.141	.042	.260	.139	.042	.249	.135	.041	.239	.131	.040	.230	.127	.039	
4.0	.246	.128	.038	.241	.126	.037	.231	.122	.037	.222	.119	.036	.214	.116	.035	
5.0	.228	.116	.034	.223	.115	.033	.215	.112	.033	.207	.109	.032	.199	.106	.032	
6.0	.211	.106	.030	.207	.105	.030	.200	.102	.030	.193	.100	.029	.186	.098	.029	
7.0	.197	.097	.028	.193	.096	.027	.187	.094	.027	.180	.092	.027	.174	.091	.027	
8.0	.184	.090	.025	.181	.089	.025	.175	.087	.025	.169	.086	.025	.164	.084	.024	
9.0	.173	.084	.023	.170	.083	.023	.164	.081	.023	.159	.080	.023	.154	.078	.023	
10.0	.162	.078	.022	.160	.077	.022	.155	.076	.021	.150	.075	.021	.146	.073	.021	

$\rho_{CC}$	80%			70%			50%			30%			10%			0
$\rho_w$	50%	30%	10%	50%	30%	10%	50%	30%	10%	50%	30%	10%	50%	30%	10%	0
$\rho_{fc}$	20%			20%			20%			20%			20%			0
RCR	RCR:Room Cavity Ratio						Ceiling Cavity Exitance Coefficients (CCEC)									
0.0	.198	.198	.198	.169	.169	.169	.115	.115	.115	.066	.066	.066	.021	.021	.021	
1.0	.187	.164	.143	.160	.140	.123	.109	.097	.085	.063	.056	.049	.020	.018	.016	
2.0	.179	.139	.106	.153	.120	.092	.105	.083	.064	.061	.048	.038	.019	.016	.012	
3.0	.171	.122	.082	.147	.105	.071	.101	.073	.050	.058	.043	.030	.019	.014	.010	
4.0	.163	.108	.066	.140	.094	.058	.096	.065	.041	.056	.038	.024	.018	.012	.008	
5.0	.156	.098	.055	.134	.085	.048	.092	.059	.034	.054	.035	.020	.017	.011	.007	
6.0	.149	.090	.047	.128	.078	.041	.088	.054	.029	.051	.032	.017	.017	.010	.006	
7.0	.142	.083	.041	.122	.072	.036	.085	.050	.025	.049	.030	.015	.016	.010	.005	
8.0	.136	.077	.037	.117	.067	.032	.081	.047	.023	.047	.028	.013	.015	.009	.004	
9.0	.130	.072	.033	.112	.063	.029	.078	.044	.020	.045	.026	.012	.015	.009	.004	
10.0	.124	.068	.030	.107	.059	.026	.074	.041	.019	.043	.024	.011	.014	.008	.004	

C Range: 0 - 360DEG  
 C Interval: 22.5DEG  
 Test Speed: HIGH  
 Temperature:25.3°C  
 Operators:DAMIN  
 Test Date:2023-11-18

$\gamma$  Range: 0 - 180DEG  
 $\gamma$  Interval: 5.0DEG  
 Test System:EVERFINE GO-2000B\_V1 SYSTEM V2.00.473  
 Humidity:65.0%  
 Test Distance:9.401m [K=1.0000]  
 Remarks:

**UGR(Unified Glare Rating) Table**

Test:U:220.38V I:0.0861A P:10.109W PF:0.5330 Freq:50.00Hz Lamp Flux:962.323x1 lm		
NAME: HYD	TYPE: 116	WEIGHT:
SPEC.:	DIM.:	SERIAL No.:
MFR.: EVERFINE	SUR.: 1	Shielding Angle:

ceiling/cavity	0.7	0.7	0.5	0.5	0.3	0.7	0.7	0.5	0.5	0.3
walls	0.5	0.3	0.5	0.3	0.3	0.5	0.3	0.5	0.3	0.3
working plane	0.2	0.2	0.2	0.2	0.2	0.2	0.2	0.2	0.2	0.2
Room dimensions	Viewed crosswise					Viewed endwise				
x = 2H y = 2H	8.9	10.4	9.2	10.6	10.8	8.7	10.2	9.0	10.4	10.6
3H	10.4	11.7	10.7	12.0	12.2	10.0	11.4	10.3	11.7	11.9
4H	10.9	12.2	11.2	12.5	12.8	10.5	11.8	10.8	12.0	12.3
6H	11.2	12.5	11.6	12.8	13.1	10.6	11.9	11.0	12.1	12.4
8H	11.3	12.5	11.6	12.8	13.1	10.6	11.8	10.9	12.1	12.4
12H	11.3	12.4	11.7	12.7	13.1	10.5	11.7	10.9	12.0	12.3
4H 2H	9.4	10.7	9.8	11.0	11.3	9.3	10.6	9.6	10.9	11.1
3H	11.1	12.2	11.4	12.5	12.9	10.8	11.9	11.1	12.2	12.6
4H	11.7	12.8	12.1	13.1	13.5	11.3	12.3	11.7	12.7	13.0
6H	12.2	13.1	12.6	13.5	13.8	11.5	12.5	12.0	12.8	13.2
8H	12.2	13.1	12.6	13.5	13.9	11.5	12.4	11.9	12.7	13.1
12H	12.3	13.0	12.7	13.5	13.9	11.5	12.2	11.9	12.6	13.1
8H 4H	11.9	12.8	12.3	13.1	13.6	11.5	12.4	11.9	12.8	13.2
6H	12.4	13.1	12.9	13.5	14.0	11.8	12.5	12.3	12.9	13.4
8H	12.5	13.1	13.0	13.6	14.0	11.8	12.4	12.2	12.8	13.3
12H	12.6	13.1	13.1	13.6	14.1	11.7	12.3	12.2	12.7	13.2
12H 4H	11.9	12.7	12.3	13.1	13.5	11.5	12.3	11.9	12.7	13.1
6H	12.4	13.0	12.9	13.5	13.9	11.8	12.4	12.3	12.9	13.3
8H	12.5	13.0	13.0	13.5	14.0	11.8	12.3	12.3	12.8	13.3
Variations with the observer position at spacings(CIE Pub.117):										
S = 1.0H	+ 0.1 / - 0.2					+ 0.2 / - 0.2				
1.5H	+ 0.2 / - 0.3					+ 0.2 / - 0.4				
2.0H	+ 0.3 / - 0.4					+ 0.3 / - 0.5				

CIE Pub.117, 962.3 lm Total Lamp Luminous Flux Correct (8log(F/F0) = -0.1)  
Area: 1 m2

C Range: 0 - 360DEG  
C Interval: 22.5DEG  
Test Speed: HIGH  
Temperature:25.3°C  
Operators:DAMIN  
Test Date:2023-11-18

γ Range: 0 - 180DEG  
γ Interval: 5.0DEG  
Test System:EVERFINE GO-2000B\_V1 SYSTEM V2.00.473  
Humidity:65.0%  
Test Distance:9.401m [K=1.0000]  
Remarks:

**UTILIZATION FACTORS TABLE**

Test:U:220.38V I:0.0861A P:10.109W PF:0.5330 Freq:50.00Hz Lamp Flux:962.323x1 lm		
NAME: HYD	TYPE: 116	WEIGHT:
SPEC.:	DIM.:	SERIAL No.:
MFR.: EVERFINE	SUR.: 1	Shielding Angle:

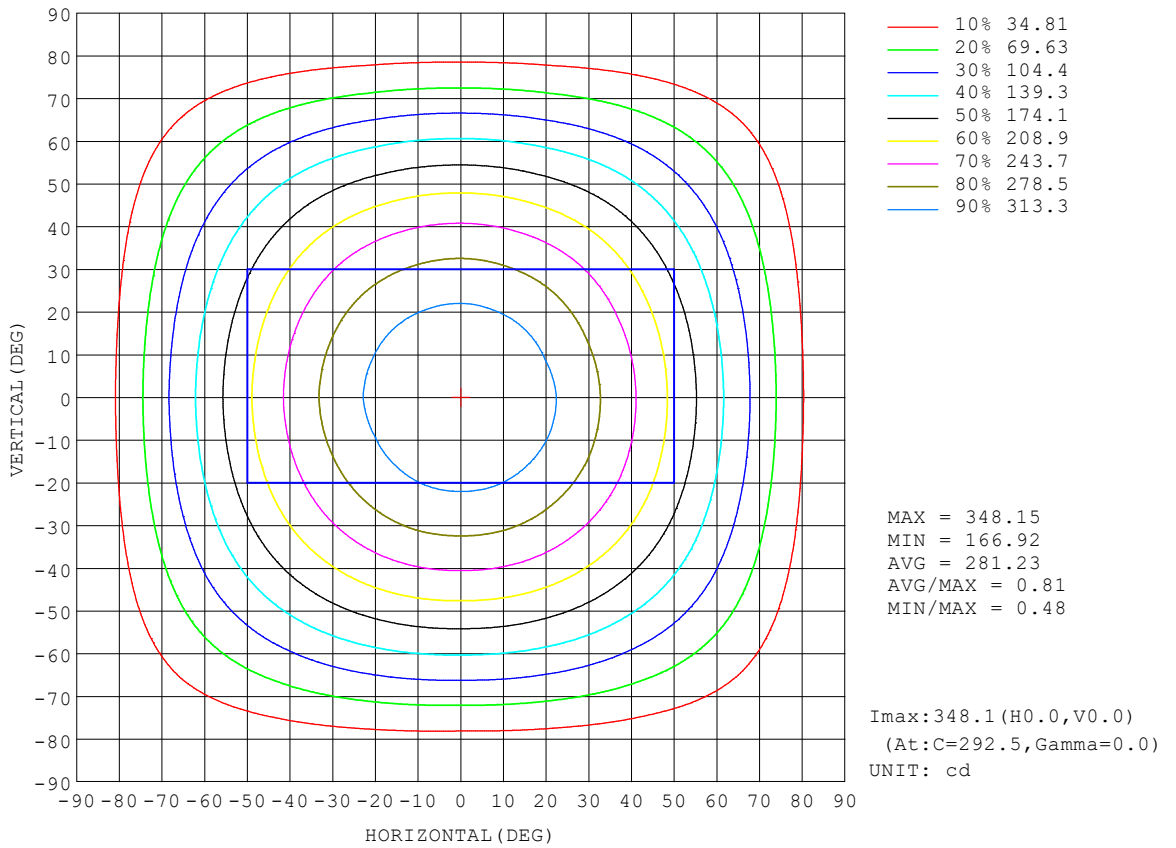
REFLECTANCE										
Ceiling	0.8	0.8	0.8	0.7	0.7	0.7	0.5	0.5	0.5	0
Walls	0.7	0.5	0.3	0.7	0.5	0.3	0.7	0.5	0.3	0
Working plane	0.2	0.2	0.2	0.2	0.2	0.2	0.2	0.2	0.2	0
ROOM INDEX	UTILIZATION FACTORS (PERCENT) $k(RI) \times RCR = 5$									
k = 0.60	58	46	39	57	46	39	56	45	39	33
0.80	68	56	49	67	56	49	65	55	48	42
1.00	76	65	58	75	65	58	73	66	57	50
1.25	83	73	66	82	72	66	79	71	65	57
1.50	88	79	72	87	78	71	84	76	70	63
2.00	95	87	81	93	86	80	90	83	78	70
2.50	99	91	86	97	90	85	93	87	83	74
3.00	102	96	90	100	94	89	96	91	87	78
4.00	106	101	96	104	99	95	100	95	92	83
5.00	109	104	100	106	102	98	102	98	95	86
ROOM INDEX	UF(total)									Direct
According to DIN EN 13032-2 2004			Suspended				SHRNOM = 1.25			

C Range: 0 - 360DEG  
 C Interval: 22.5DEG  
 Test Speed: HIGH  
 Temperature:25.3°C  
 Operators:DAMIN  
 Test Date:2023-11-18

$\gamma$  Range: 0 - 180DEG  
 $\gamma$  Interval: 5.0DEG  
 Test System:EVERFINE GO-2000B\_V1 SYSTEM V2.00.473  
 Humidity:65.0%  
 Test Distance:9.401m [K=1.0000]  
 Remarks:

**ISOCANDELA DIAGRAM**

Test:U:220.38V I:0.0861A P:10.109W PF:0.5330 Freq:50.00Hz Lamp Flux:962.323x1 lm		
NAME: HYD	TYPE: 116	WEIGHT:
SPEC.:	DIM.:	SERIAL No.:
MFR.: EVERFINE	SUR.: 1	Shielding Angle:



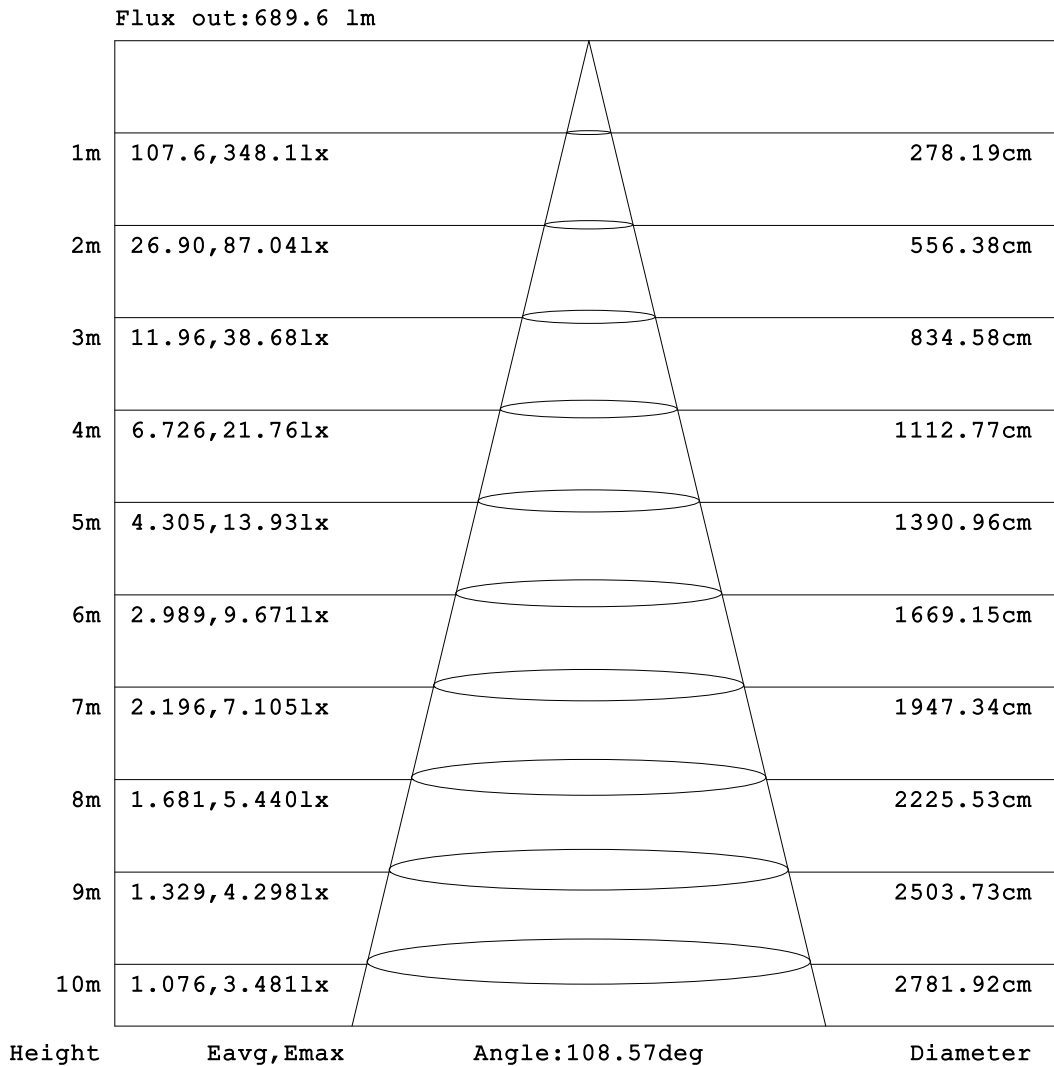
C Range: 0 - 360DEG  
 C Interval: 22.5DEG  
 Test Speed: HIGH  
 Temperature:25.3°C  
 Operators:DAMIN  
 Test Date:2023-11-18

γ Range: 0 - 180DEG  
 γ Interval: 5.0DEG  
 Test System:EVERFINE GO-2000B\_V1 SYSTEM V2.00.473  
 Humidity:65.0%  
 Test Distance:9.401m [K=1.0000]  
 Remarks:



**AAI Figure**

Test:U:220.38V I:0.0861A P:10.109W PF:0.5330 Freq:50.00Hz Lamp Flux:962.323x1 lm		
NAME: HYD	TYPE: 116	WEIGHT:
SPEC.:	DIM.:	SERIAL No.:
MFR.: EVERFINE	SUR.: 1	Shielding Angle:



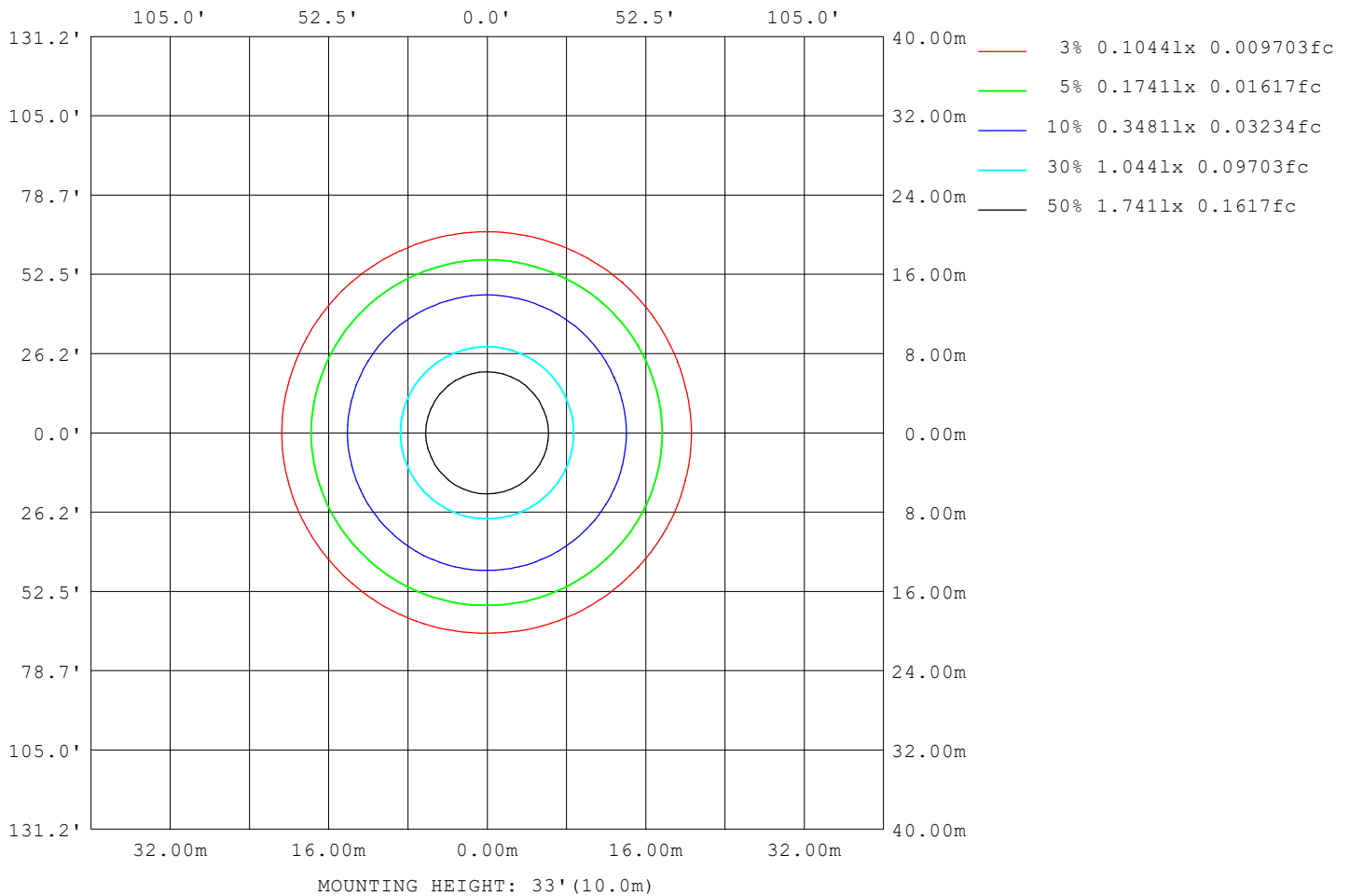
Note:The Curves indicate the illuminated area and the average illumination when the luminaire is at different distance.

C Range: 0 - 360DEG  
C Interval: 22.5DEG  
Test Speed: HIGH  
Temperature:25.3°C  
Operators:DAMIN  
Test Date:2023-11-18

γ Range: 0 - 180DEG  
γ Interval: 5.0DEG  
Test System:EVERFINE GO-2000B\_V1 SYSTEM V2.00.473  
Humidity:65.0%  
Test Distance:9.401m [K=1.0000]  
Remarks:

**ISOLUX DIAGRAM**

Test:U:220.38V I:0.0861A P:10.109W PF:0.5330 Freq:50.00Hz Lamp Flux:962.323x1 lm		
NAME: HYD	TYPE: 116	WEIGHT:
SPEC.:	DIM.:	SERIAL No.:
MFR.: EVERFINE	SUR.: 1	Shielding Angle:



C Range: 0 - 360DEG  
 C Interval: 22.5DEG  
 Test Speed: HIGH  
 Temperature:25.3°C  
 Operators:DAMIN  
 Test Date:2023-11-18

γ Range: 0 - 180DEG  
 γ Interval: 5.0DEG  
 Test System:EVERFINE GO-2000B\_V1 SYSTEM V2.00.473  
 Humidity:65.0%  
 Test Distance:9.401m [K=1.0000]  
 Remarks:

**LED Avg.L Report**

Test:U:220.38V I:0.0861A P:10.109W PF:0.5330 Freq:50.00Hz Lamp Flux:962.323x1 lm		
NAME: HYD	TYPE: 116	WEIGHT:
SPEC.:	DIM.:	SERIAL No.:
MFR.: EVERFINE	SUR.: 1	Shielding Angle:

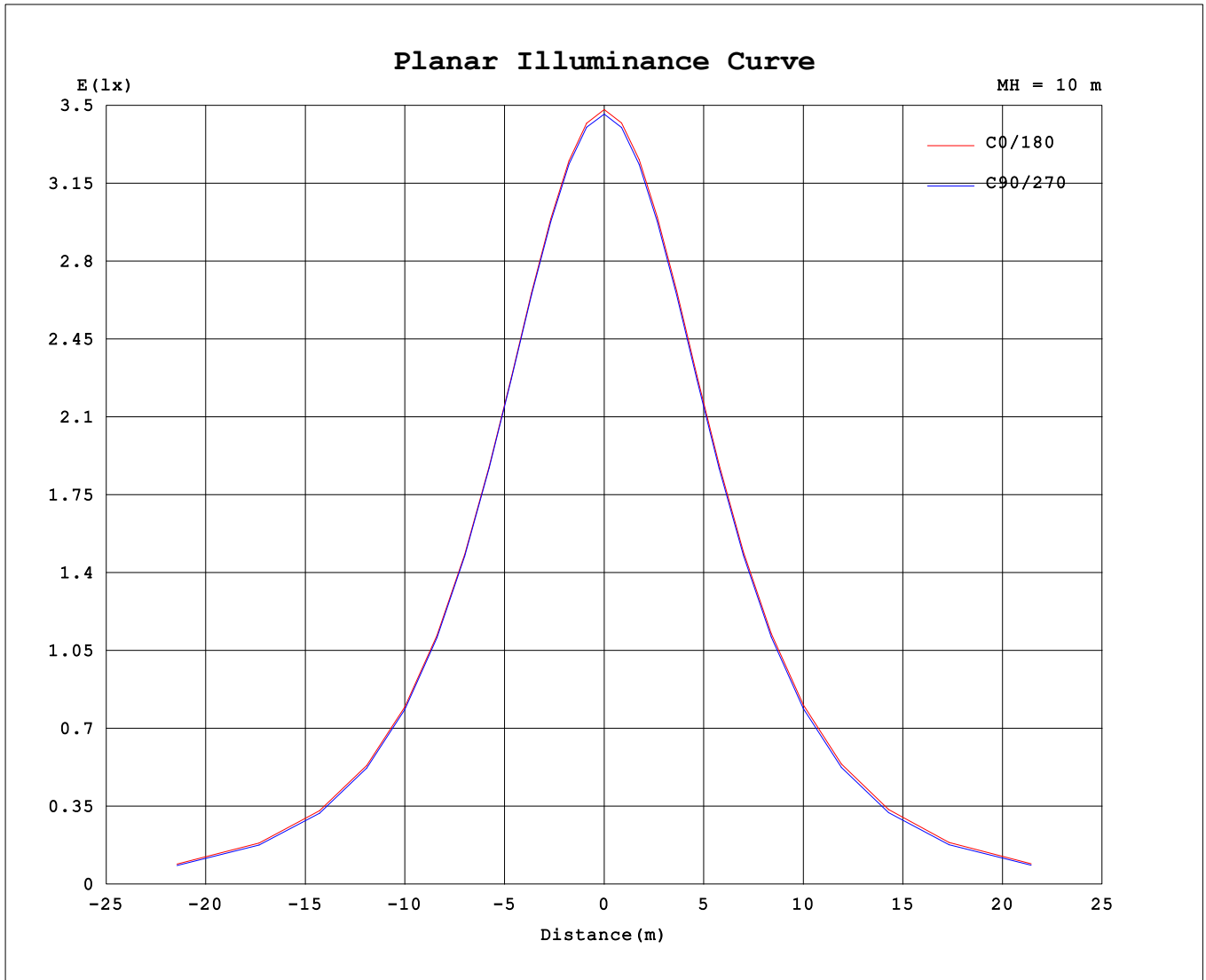
AvgL	cd/m2
L_0~180 (65) av	287
L_0~180 (75) av	250
L_0~180 (85) av	157
L_90~270 (65) av	267
L_90~270 (75) av	207
L_90~270 (85) av	34
L_45 (65) av	276
L_45 (75) av	225
L_45 (85) av	63

Standard: GB/T 29293-2012

C Range: 0 - 360DEG  
 C Interval: 22.5DEG  
 Test Speed: HIGH  
 Temperature:25.3°C  
 Operators:DAMIN  
 Test Date:2023-11-18

γ Range: 0 - 180DEG  
 γ Interval: 5.0DEG  
 Test System:EVERFINE GO-2000B\_V1 SYSTEM V2.00.473  
 Humidity:65.0%  
 Test Distance:9.401m [K=1.0000]  
 Remarks:

**Planar Illuminance Curve**



C Range: 0 - 360DEG  
 C Interval: 22.5DEG  
 Test Speed: HIGH  
 Temperature: 25.3°C  
 Operators: DAMIN  
 Test Date: 2023-11-18

γ Range: 0 - 180DEG  
 γ Interval: 5.0DEG  
 Test System: EVERFINE GO-2000B\_V1 SYSTEM V2.00.473  
 Humidity: 65.0%  
 Test Distance: 9.401m [K=1.0000]  
 Remarks:

LUMINOUS DISTRIBUTION INTENSITY DATA

Test:U:220.38V I:0.0861A P:10.109W PF:0.5330 Freq:50.00Hz Lamp Flux:962.323x1 lm		
NAME: HYD	TYPE: 116	WEIGHT:
SPEC.:	DIM.:	SERIAL No.:
MFR.: EVERFINE	SUR.: 1	Shielding Angle:

Table--1

UNIT: cd

C (DEG) \ γ (DEG)	0	22.5	45	67.5	90	112.5	135	157.5	180	202.5	225	247.5	270	292.5	315	337.5			
0	347	347	347	347	347	347	347	347	347	347	347	347	347	347	347	347			
5	344	344	344	344	345	345	345	345	344	344	344	344	344	344	344	344			
10	339	339	339	339	339	339	339	339	339	339	339	339	339	339	339	339			
15	330	331	331	331	331	331	331	331	331	331	331	330	331	330	331	330			
20	319	319	319	320	320	320	320	320	320	320	320	319	319	319	319	319			
25	304	305	305	305	305	306	306	306	306	305	306	305	305	305	305	304			
30	288	288	288	289	289	289	289	290	289	289	289	288	288	288	288	288			
35	269	270	269	269	269	270	270	271	270	270	270	269	269	269	269	269			
40	248	248	247	247	247	248	249	250	250	249	249	248	248	247	248	247			
45	225	225	224	223	223	224	225	227	227	226	226	224	224	223	224	224			
50	200	201	199	198	197	199	200	203	203	202	201	199	198	198	200	200			
55	175	174	172	171	170	172	174	176	177	176	174	172	171	171	173	174			
60	148	147	144	142	141	143	146	149	150	148	147	143	143	143	145	146			
65	120	119	115	113	112	114	117	121	123	120	118	114	114	114	116	118			
70	91.5	89.8	85.7	83.6	82.2	84.7	87.9	92.4	94.6	91.6	88.6	84.8	84.1	84.2	87.3	89.6			
75	63.2	61.0	56.3	54.0	52.5	55.2	58.6	63.8	66.4	63.0	59.4	55.4	54.6	55.0	58.3	61.1			
80	36.2	33.3	28.3	25.7	24.3	26.8	30.4	36.1	39.0	35.3	31.1	27.1	26.3	26.8	30.4	33.8			
85	12.8	9.64	4.83	3.04	2.48	3.39	5.36	10.9	14.6	10.1	5.91	3.58	3.42	3.48	5.72	9.49			
90	0.49	0.47	0.45	0.44	0.43	0.44	0.45	0.49	0.56	0.57	0.54	0.52	0.51	0.52	0.54	0.55			
95	0.53	0.59	0.59	0.92	0.92	0.95	0.54	0.58	0.68	0.61	0.65	0.60	0.64	0.58	0.66	0.62			
100	0.68	0.73	0.66	0.71	0.64	0.72	0.66	0.72	0.82	0.76	0.81	0.73	0.79	0.72	0.82	0.77			
105	0.83	0.88	0.81	0.87	0.80	0.86	0.80	0.88	0.99	0.91	0.96	0.88	0.95	0.90	0.97	0.92			
110	0.99	1.06	0.97	1.02	0.96	1.02	0.97	1.03	1.16	1.09	1.13	1.06	1.13	1.07	1.15	1.10			
115	1.15	1.21	1.14	1.20	1.13	1.19	1.13	1.20	1.34	1.26	1.32	1.23	1.31	1.25	1.33	1.27			
120	1.32	1.38	1.32	1.37	1.31	1.36	1.30	1.36	1.52	1.44	1.49	1.43	1.49	1.44	1.50	1.45			
125	1.49	1.56	1.47	1.54	1.47	1.53	1.47	1.53	1.69	1.60	1.64	1.60	1.67	1.60	1.66	1.61			
130	1.67	1.71	1.64	1.71	1.65	1.70	1.63	1.69	1.85	1.75	1.81	1.76	1.83	1.76	1.83	1.77			
135	1.82	1.86	1.79	1.86	1.80	1.85	1.77	1.84	2.00	1.91	1.97	1.90	1.98	1.91	1.97	1.94			
140	1.97	2.01	1.96	2.03	1.96	2.01	1.94	2.01	2.15	2.05	2.11	2.05	2.13	2.07	2.11	2.07			
145	2.12	2.19	2.12	2.18	2.12	2.15	2.10	2.17	2.28	2.19	2.26	2.17	2.27	2.18	2.25	2.20			
150	2.28	2.33	2.25	2.33	2.27	2.30	2.24	2.32	2.42	2.32	2.37	2.31	2.39	2.33	2.40	2.34			
155	2.41	2.47	2.39	2.48	2.42	2.46	2.38	2.45	2.54	2.45	2.50	2.44	2.53	2.46	2.51	2.46			
160	2.55	2.59	2.55	2.61	2.56	2.59	2.53	2.60	2.67	2.58	2.65	2.57	2.67	2.59	2.64	2.58			
165	2.70	2.75	2.68	2.76	2.70	2.74	2.66	2.74	2.79	2.72	2.77	2.70	2.79	2.72	2.77	2.71			
170	2.80	2.88	2.81	2.89	2.80	2.85	2.79	2.86	2.89	2.82	2.87	2.80	2.88	2.82	2.87	2.80			
175	2.89	2.97	2.92	2.98	2.89	2.95	2.90	2.95	2.96	2.91	2.97	2.88	2.95	2.89	2.97	2.89			
180	2.95	2.97	2.98	2.99	2.95	2.96	2.96	2.96	2.96	2.96	2.99	2.96	2.96	2.95	2.96	2.95			

C Range: 0 - 360DEG  
 C Interval: 22.5DEG  
 Test Speed: HIGH  
 Temperature:25.3°C  
 Operators:DAMIN  
 Test Date:2023-11-18

γ Range: 0 - 180DEG  
 γ Interval: 5.0DEG  
 Test System:EVERFINE GO-2000B\_V1 SYSTEM V2.00.473  
 Humidity:65.0%  
 Test Distance:9.401m [K=1.0000]  
 Remarks: