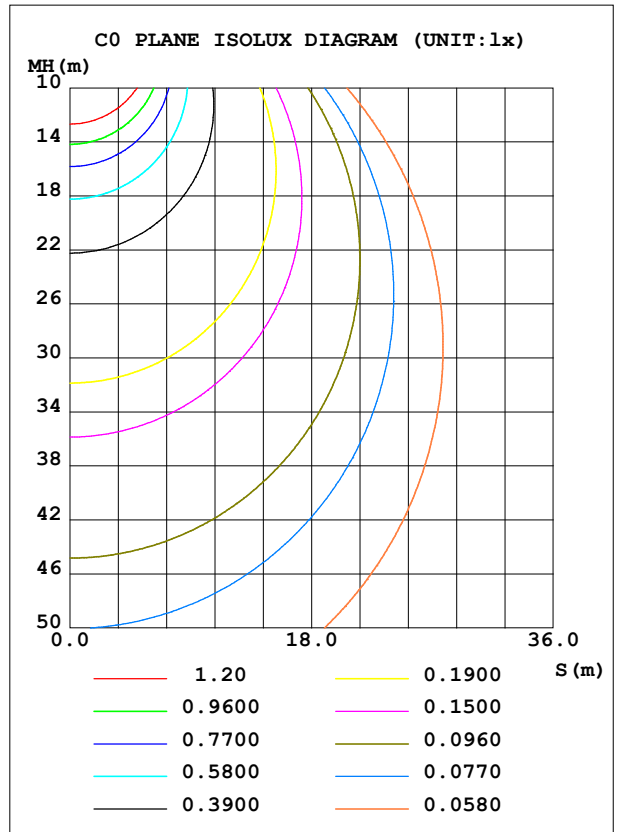
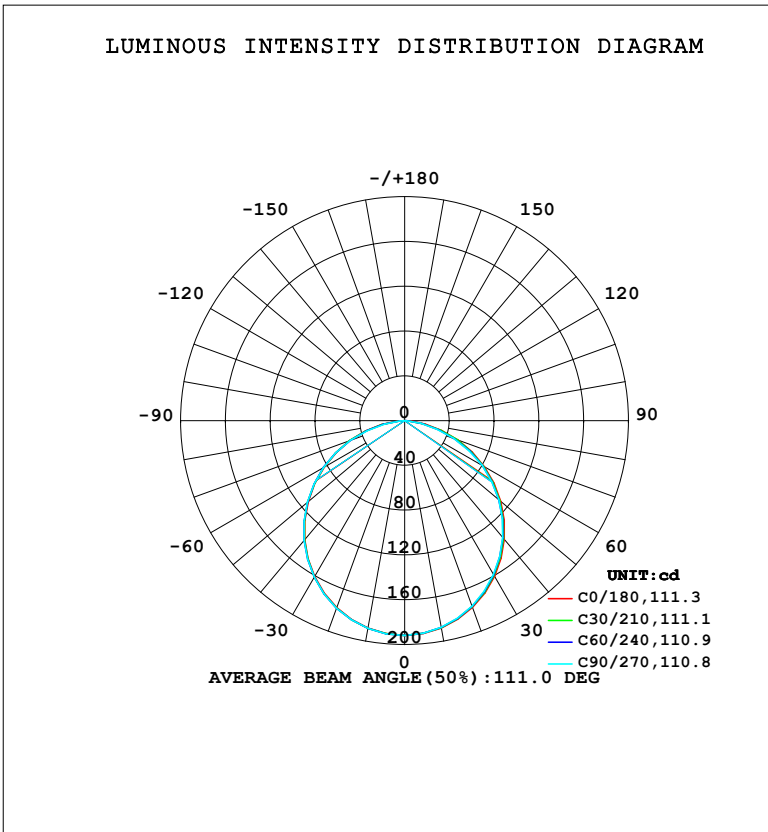


LUMINAIRE PHOTOMETRIC TEST REPORT

Test:U:220.45V I:0.0495A P:6.4171W PF:0.5884 Freq:50.00Hz Lamp Flux:535.333x1 lm		
NAME:	TYPE:	WEIGHT:
SPEC.:	DIM.:	SERIAL No.:
MFR.: EVERFINE	SUR.:	Shielding Angle:

DATA OF LAMP		PHOTOMETRIC DATA				Eff: 83.42 lm/W
MODEL	102BR	I _{max} (cd)	191.8	S/MH (C0/180)	1.25	
NOMINAL POWER (W)	6	LOR (%)	100.0	S/MH (C90/270)	1.25	
RATED VOLTAGE (V)	220	TOTAL FLUX (lm)	535.33	η UP, DN (C0-180)	0.0, 49.4	
NOMINAL FLUX (lm)	535.333	CIE CLASS	DIRECT	η UP, DN (C180-360)	0.0, 50.6	
LAMPS INSIDE	1	η up (%)	0.0	CIBSE SHR NOM	1.25	
TEST VOLTAGE (V)	219.5	η down (%)	100.0	CIBSE SHR MAX	1.35	



C Range: 0 - 360DEG
 C Interval: 15.0DEG
 Test Speed: HIGH
 Temperature: 25.3°C
 Operators: DAMIN
 Test Date: 2024-01-24

γ Range: 0 - 90DEG
 γ Interval: 5.0DEG
 Test System: EVERFINE GO-2000B_V1 SYSTEM V2.00.473
 Humidity: 65.0%
 Test Distance: 9.401m [K=1.0000]
 Remarks:

ZONAL FLUX DIAGRAM

ZONAL FLUX DIAGRAM:

γ	C0	C45	C90	C135	C180	C225	C270	C315	γ	Φ zone	Φ total	%lum, lamp
10	188.1	187.8	187.5	187.8	188.2	188.4	188.5	188.4	0- 10	18.13	18.13	3.39,3.39
20	177.4	176.8	176.3	176.9	177.7	177.9	178.3	178.0	10- 20	51.81	69.94	13.1,13.1
30	160.6	159.6	158.9	159.8	160.9	161.2	161.6	161.4	20- 30	78.19	148.1	27.7,27.7
40	138.4	137.2	136.3	137.5	138.9	139.2	139.7	139.4	30- 40	93.83	242.0	45.2,45.2
50	112.0	110.7	109.7	111.0	112.5	113.0	113.4	113.1	40- 50	96.86	338.8	63.3,63.3
60	82.37	81.05	79.94	81.37	82.96	83.39	84.01	83.45	50- 60	87.09	425.9	79.6,79.6
70	51.04	49.29	46.70	49.57	51.69	51.86	51.40	51.79	60- 70	65.86	491.8	91.9,91.9
80	19.10	17.40	14.52	17.53	21.08	19.81	18.41	19.70	70- 80	36.15	527.9	98.6,98.6
90	0.2933	0.2886	0.2832	0.2838	0.3592	0.3607	0.3555	0.3562	80- 90	7.414	535.3	100,100
100									90-100			
110									100-110			
120									110-120			
130									120-130			
140									130-140			
150									140-150			
160									150-160			
170									160-170			
180									170-180			
DEG	LUMINOUS INTENSITY:cd									UNIT:lm		

Conical surface Flux(90deg): 290.82 lm

%lum = 54.3%

%lamp = 54.3%

Conical surface Flux(130deg): 462.13 lm

%lum = 86.3%

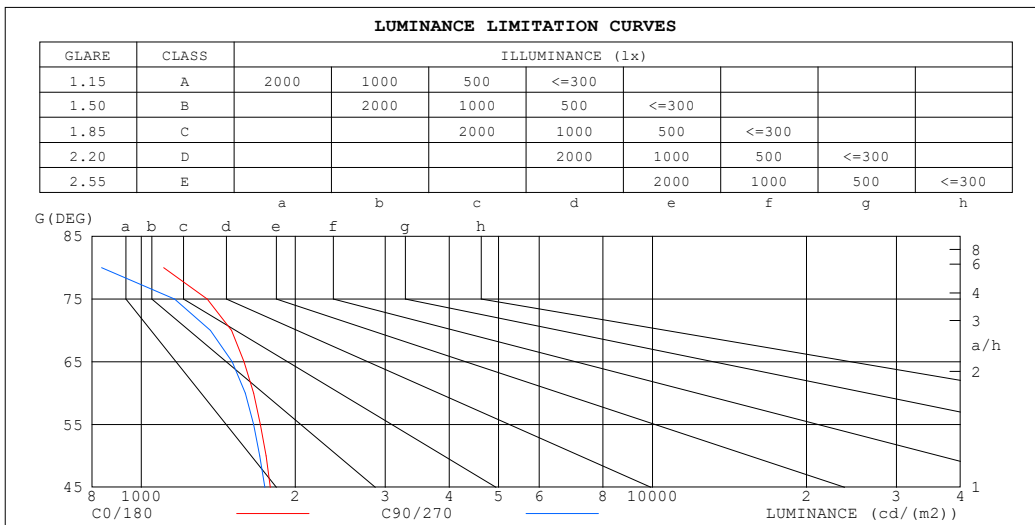
%lamp = 86.3%

C Range: 0 - 360DEG
 C Interval: 15.0DEG
 Test Speed: HIGH
 Temperature:25.3°C
 Operators:DAMIN
 Test Date:2024-01-24

γ Range: 0 - 90DEG
 γ Interval: 5.0DEG
 Test System:EVERFINE GO-2000B_V1 SYSTEM V2.00.473
 Humidity:65.0%
 Test Distance:9.401m [K=1.0000]
 Remarks:

LUMINANCE LIMITATION CURVES

Test:U:220.45V I:0.0495A P:6.4171W PF:0.5884 Freq:50.00Hz Lamp Flux:535.333x1 lm		
NAME:	TYPE:	WEIGHT:
SPEC.:	DIM.:	SERIAL No.:
MFR.: EVERFINE	SUR.:	Shielding Angle:



LUMINANCE cd/ (m2)		
G (DEG)	C0/180	C90/270
85	722	106
80	1106	835
75	1345	1161
70	1501	1364
65	1589	1505
60	1657	1598
55	1710	1658
50	1753	1705
45	1788	1745

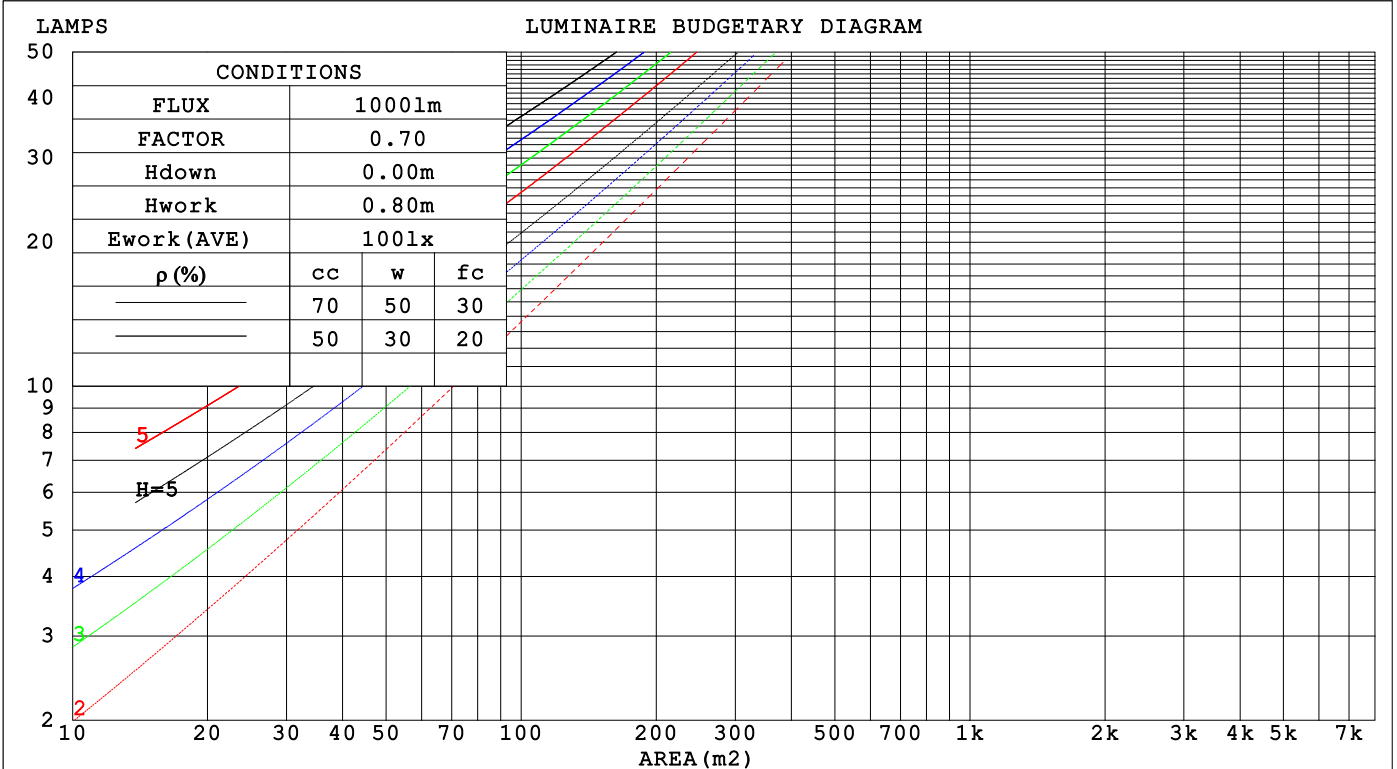
C Range: 0 - 360DEG
 C Interval: 15.0DEG
 Test Speed: HIGH
 Temperature:25.3°C
 Operators:DAMIN
 Test Date:2024-01-24

γ Range: 0 - 90DEG
 γ Interval: 5.0DEG
 Test System:EVERFINE GO-2000B_V1 SYSTEM V2.00.473
 Humidity:65.0%
 Test Distance:9.401m [K=1.0000]
 Remarks:

CU AND LUMINAIRE BUDGETARY ESTIMATE DIAGRAM

Test:U:220.45V I:0.0495A P:6.4171W PF:0.5884 Freq:50.00Hz Lamp Flux:535.333x1 lm		
NAME:	TYPE:	WEIGHT:
SPEC.:	DIM.:	SERIAL No.:
MFR.: EVERFINE	SUR.:	Shielding Angle:

pcc	80%			70%			50%			30%			10%			0
	50%	30%	10%	50%	30%	10%	50%	30%	10%	50%	30%	10%	50%	30%	10%	0
p _w	20%			20%			20%			20%			20%			0
p _{fc}	20%			20%			20%			20%			20%			0
RCR	RCR:Room Cavity Ratio Coefficients of Utilization(CU)															
0.0	1.19	1.19	1.19	1.16	1.16	1.16	1.11	1.11	1.11	1.06	1.06	1.06	1.02	1.02	1.02	1.00
1.0	1.04	1.00	.96	1.02	.98	.95	.98	.95	.92	.94	.91	.89	.90	.88	.86	.84
2.0	.91	.84	.78	.89	.83	.77	.85	.80	.76	.82	.78	.74	.79	.75	.72	.70
3.0	.80	.72	.65	.78	.71	.65	.75	.69	.63	.72	.67	.62	.70	.65	.61	.59
4.0	.71	.62	.55	.69	.61	.55	.67	.60	.54	.64	.58	.53	.62	.57	.53	.50
5.0	.63	.54	.47	.62	.54	.47	.60	.52	.47	.58	.51	.46	.56	.50	.46	.44
6.0	.57	.48	.41	.56	.47	.41	.54	.46	.41	.52	.46	.40	.51	.45	.40	.38
7.0	.51	.43	.37	.51	.42	.36	.49	.42	.36	.48	.41	.36	.46	.40	.36	.34
8.0	.47	.38	.33	.46	.38	.33	.45	.38	.32	.44	.37	.32	.43	.36	.32	.30
9.0	.43	.35	.29	.43	.35	.29	.41	.34	.29	.40	.34	.29	.39	.33	.29	.27
10.0	.40	.32	.27	.39	.32	.27	.38	.31	.26	.37	.31	.26	.36	.30	.26	.24



C Range: 0 - 360DEG
 C Interval: 15.0DEG
 Test Speed: HIGH
 Temperature:25.3°C
 Operators:DAMIN
 Test Date:2024-01-24

γ Range: 0 - 90DEG
 γ Interval: 5.0DEG
 Test System:EVERFINE GO-2000B_V1 SYSTEM V2.00.473
 Humidity:65.0%
 Test Distance:9.401m [K=1.0000]
 Remarks:

WEC AND CCEC

Test:U:220.45V I:0.0495A P:6.4171W PF:0.5884 Freq:50.00Hz								
Lamp Flux:535.333x1 lm								
NAME:			TYPE:			WEIGHT:		
SPEC.:			DIM.:			SERIAL No.:		
MFR.: EVERFINE			SUR.:			Shielding Angle:		

ρ_{CC}	80%			70%			50%			30%			10%			0
ρ_w	50%	30%	10%	50%	30%	10%	50%	30%	10%	50%	30%	10%	50%	30%	10%	0
ρ_{fc}	20%			20%			20%			20%			20%			0
RCR	RCR:Room Cavity Ratio						Wall Exitance Coefficients (WEC)									
0.0																
1.0	.303	.172	.055	.296	.169	.054	.283	.162	.052	.271	.156	.050	.259	.150	.048	
2.0	.288	.158	.048	.282	.155	.048	.270	.150	.047	.259	.145	.046	.249	.141	.044	
3.0	.267	.142	.043	.262	.140	.042	.252	.136	.041	.242	.133	.041	.233	.129	.040	
4.0	.247	.129	.038	.242	.127	.038	.233	.124	.037	.225	.121	.036	.217	.118	.036	
5.0	.229	.117	.034	.225	.115	.034	.217	.113	.033	.209	.110	.033	.202	.108	.032	
6.0	.213	.107	.030	.209	.105	.030	.201	.103	.030	.195	.101	.030	.188	.099	.029	
7.0	.198	.098	.028	.195	.097	.028	.188	.095	.027	.182	.093	.027	.176	.092	.027	
8.0	.185	.090	.025	.182	.090	.025	.176	.088	.025	.171	.086	.025	.166	.085	.025	
9.0	.173	.084	.023	.171	.083	.023	.166	.082	.023	.161	.081	.023	.156	.079	.023	
10.0	.163	.078	.022	.161	.078	.022	.156	.076	.022	.152	.075	.021	.147	.074	.021	

ρ_{CC}	80%			70%			50%			30%			10%			0
ρ_w	50%	30%	10%	50%	30%	10%	50%	30%	10%	50%	30%	10%	50%	30%	10%	0
ρ_{fc}	20%			20%			20%			20%			20%			0
RCR	RCR:Room Cavity Ratio						Ceiling Cavity Exitance Coefficients (CCEC)									
0.0	.190	.190	.190	.163	.163	.163	.111	.111	.111	.064	.064	.064	.020	.020	.020	
1.0	.180	.156	.135	.154	.134	.116	.105	.092	.080	.061	.053	.047	.019	.017	.015	
2.0	.172	.132	.098	.147	.114	.085	.101	.079	.059	.058	.046	.035	.019	.015	.011	
3.0	.164	.114	.075	.141	.099	.065	.097	.068	.045	.056	.040	.027	.018	.013	.009	
4.0	.156	.101	.059	.134	.087	.051	.092	.061	.036	.053	.036	.021	.017	.012	.007	
5.0	.149	.091	.047	.128	.078	.041	.088	.055	.029	.051	.032	.017	.016	.010	.006	
6.0	.142	.082	.039	.122	.071	.034	.084	.050	.024	.049	.029	.014	.016	.010	.005	
7.0	.135	.075	.033	.116	.065	.029	.080	.046	.021	.047	.027	.012	.015	.009	.004	
8.0	.129	.069	.029	.111	.060	.025	.077	.042	.018	.045	.025	.011	.014	.008	.004	
9.0	.123	.065	.025	.106	.056	.022	.073	.039	.016	.043	.023	.009	.014	.008	.003	
10.0	.117	.060	.022	.101	.052	.020	.070	.037	.014	.041	.022	.008	.013	.007	.003	

C Range: 0 - 360DEG
 C Interval: 15.0DEG
 Test Speed: HIGH
 Temperature:25.3°C
 Operators:DAMIN
 Test Date:2024-01-24

γ Range: 0 - 90DEG
 γ Interval: 5.0DEG
 Test System:EVERFINE GO-2000B_V1 SYSTEM V2.00.473
 Humidity:65.0%
 Test Distance:9.401m [K=1.0000]
 Remarks:

UGR(Unified Glare Rating) Table

Test:U:220.45V I:0.0495A P:6.4171W PF:0.5884 Freq:50.00Hz										
Lamp Flux:535.333x1 lm										
NAME:			TYPE:				WEIGHT:			
SPEC.:			DIM.:				SERIAL No.:			
MFR.: EVERFINE			SUR.:				Shielding Angle:			
ceiling/cavity	0.7	0.7	0.5	0.5	0.3	0.7	0.7	0.5	0.5	0.3
walls	0.5	0.3	0.5	0.3	0.3	0.5	0.3	0.5	0.3	0.3
working plane	0.2	0.2	0.2	0.2	0.2	0.2	0.2	0.2	0.2	0.2
Room dimensions	Viewed crosswise					Viewed endwise				
x = 2H y = 2H	16.9	18.4	17.2	18.6	18.8	16.8	18.3	17.0	18.5	18.7
3H	18.4	19.8	18.7	20.0	20.3	18.1	19.5	18.4	19.8	20.0
4H	19.0	20.3	19.3	20.5	20.8	18.6	19.9	18.9	20.2	20.4
6H	19.3	20.5	19.6	20.8	21.1	18.8	20.1	19.1	20.3	20.6
8H	19.3	20.5	19.6	20.8	21.1	18.7	20.0	19.1	20.2	20.5
12H	19.3	20.4	19.6	20.7	21.0	18.7	19.9	19.0	20.2	20.5
4H 2H	17.5	18.8	17.8	19.1	19.3	17.4	18.7	17.7	19.0	19.2
3H	19.2	20.3	19.5	20.6	20.9	18.9	20.1	19.3	20.4	20.7
4H	19.8	20.9	20.2	21.2	21.5	19.5	20.5	19.8	20.9	21.2
6H	20.2	21.1	20.6	21.5	21.9	19.7	20.7	20.1	21.0	21.4
8H	20.2	21.1	20.6	21.5	21.9	19.7	20.6	20.1	20.9	21.3
12H	20.3	21.1	20.7	21.4	21.9	19.7	20.5	20.1	20.8	21.3
8H 4H	20.0	20.9	20.4	21.2	21.6	19.7	20.6	20.1	20.9	21.3
6H	20.5	21.2	20.9	21.6	22.0	20.0	20.8	20.5	21.2	21.6
8H	20.5	21.2	21.0	21.6	22.0	20.0	20.6	20.5	21.1	21.5
12H	20.6	21.1	21.0	21.6	22.0	20.0	20.5	20.4	21.0	21.4
12H 4H	20.0	20.8	20.4	21.2	21.6	19.7	20.5	20.1	20.9	21.3
6H	20.4	21.1	20.9	21.5	22.0	20.0	20.7	20.5	21.1	21.5
8H	20.5	21.1	21.0	21.5	22.0	20.0	20.5	20.5	21.0	21.5
Variations with the observer position at spacings(CIE Pub.117):										
S = 1.0H	+ 0.1 / - 0.2					+ 0.2 / - 0.2				
1.5H	+ 0.1 / - 0.3					+ 0.2 / - 0.3				
2.0H	+ 0.3 / - 0.4					+ 0.3 / - 0.4				

CIE Pub.117, 535.3 lm Total Lamp Luminous Flux Correct (8log(F/F0) = -2.2)
 Area: 0.1 m2

C Range: 0 - 360DEG
 C Interval: 15.0DEG
 Test Speed: HIGH
 Temperature:25.3°C
 Operators:DAMIN
 Test Date:2024-01-24

γ Range: 0 - 90DEG
 γ Interval: 5.0DEG
 Test System:EVERFINE GO-2000B_V1 SYSTEM V2.00.473
 Humidity:65.0%
 Test Distance:9.401m [K=1.0000]
 Remarks:

UTILIZATION FACTORS TABLE

Test:U:220.45V I:0.0495A P:6.4171W PF:0.5884 Freq:50.00Hz Lamp Flux:535.333x1 lm		
NAME:	TYPE:	WEIGHT:
SPEC.:	DIM.:	SERIAL No.:
MFR.: EVERFINE	SUR.:	Shielding Angle:

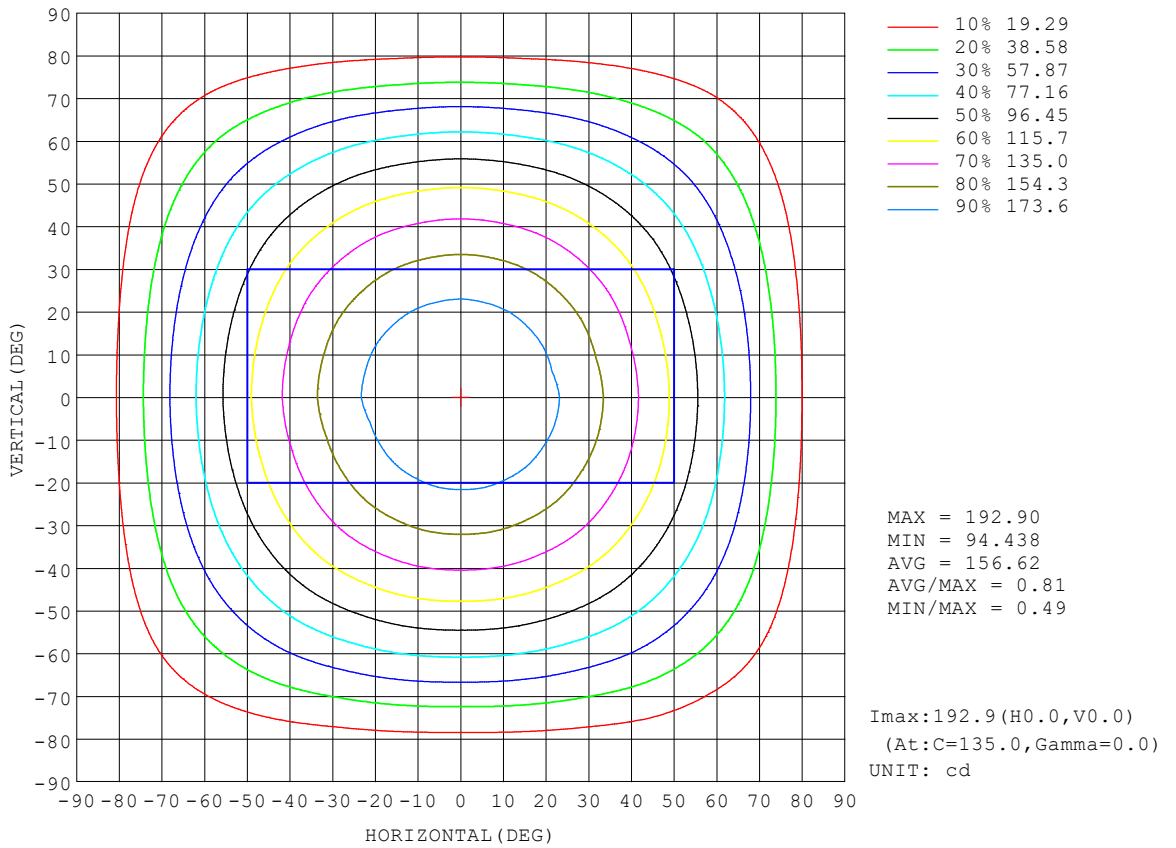
REFLECTANCE										
Ceiling	0.8	0.8	0.8	0.7	0.7	0.7	0.5	0.5	0.5	0
Walls	0.7	0.5	0.3	0.7	0.5	0.3	0.7	0.5	0.3	0
Working plane	0.2	0.2	0.2	0.2	0.2	0.2	0.2	0.2	0.2	0
ROOM INDEX	UTILIZATION FACTORS (PERCENT) $k(RI) \times RCR = 5$									
k = 0.60	58	46	39	57	46	39	56	46	39	33
0.80	68	56	49	67	56	49	65	55	48	42
1.00	76	65	58	75	65	58	73	66	57	50
1.25	83	73	66	82	72	66	79	71	65	57
1.50	88	79	72	87	78	71	84	76	70	63
2.00	95	87	80	93	86	80	90	83	78	70
2.50	99	92	86	97	90	85	93	88	83	75
3.00	103	96	90	100	94	89	96	91	87	79
4.00	107	101	96	104	99	95	100	96	92	84
5.00	109	104	100	107	102	99	102	99	96	87
ROOM INDEX	UF(total)									Direct
According to DIN EN 13032-2 2004			Suspended				SHRNOM = 1.25			

C Range: 0 - 360DEG
 C Interval: 15.0DEG
 Test Speed: HIGH
 Temperature:25.3°C
 Operators:DAMIN
 Test Date:2024-01-24

γ Range: 0 - 90DEG
 γ Interval: 5.0DEG
 Test System:EVERFINE GO-2000B_V1 SYSTEM V2.00.473
 Humidity:65.0%
 Test Distance:9.401m [K=1.0000]
 Remarks:

ISOCANDELA DIAGRAM

Test:U:220.45V I:0.0495A P:6.4171W PF:0.5884 Freq:50.00Hz Lamp Flux:535.333x1 lm		
NAME:	TYPE:	WEIGHT:
SPEC.:	DIM.:	SERIAL No.:
MFR.: EVERFINE	SUR.:	Shielding Angle:

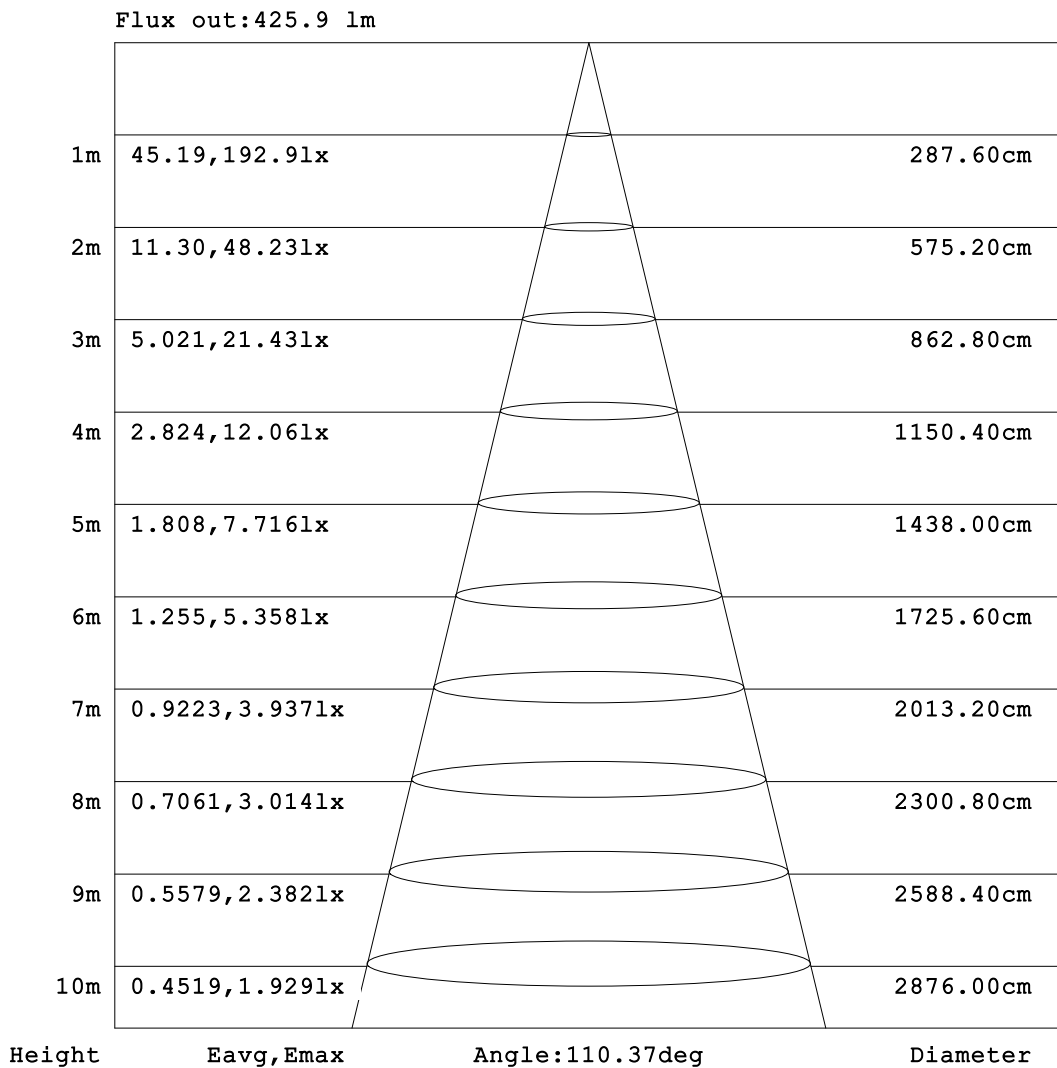


C Range: 0 - 360DEG
 C Interval: 15.0DEG
 Test Speed: HIGH
 Temperature:25.3°C
 Operators:DAMIN
 Test Date:2024-01-24

γ Range: 0 - 90DEG
 γ Interval: 5.0DEG
 Test System:EVERFINE GO-2000B_V1 SYSTEM V2.00.473
 Humidity:65.0%
 Test Distance:9.401m [K=1.0000]
 Remarks:

AAI Figure

Test:U:220.45V I:0.0495A P:6.4171W PF:0.5884 Freq:50.00Hz Lamp Flux:535.333x1 lm		
NAME:	TYPE:	WEIGHT:
SPEC.:	DIM.:	SERIAL No.:
MFR.: EVERFINE	SUR.:	Shielding Angle:



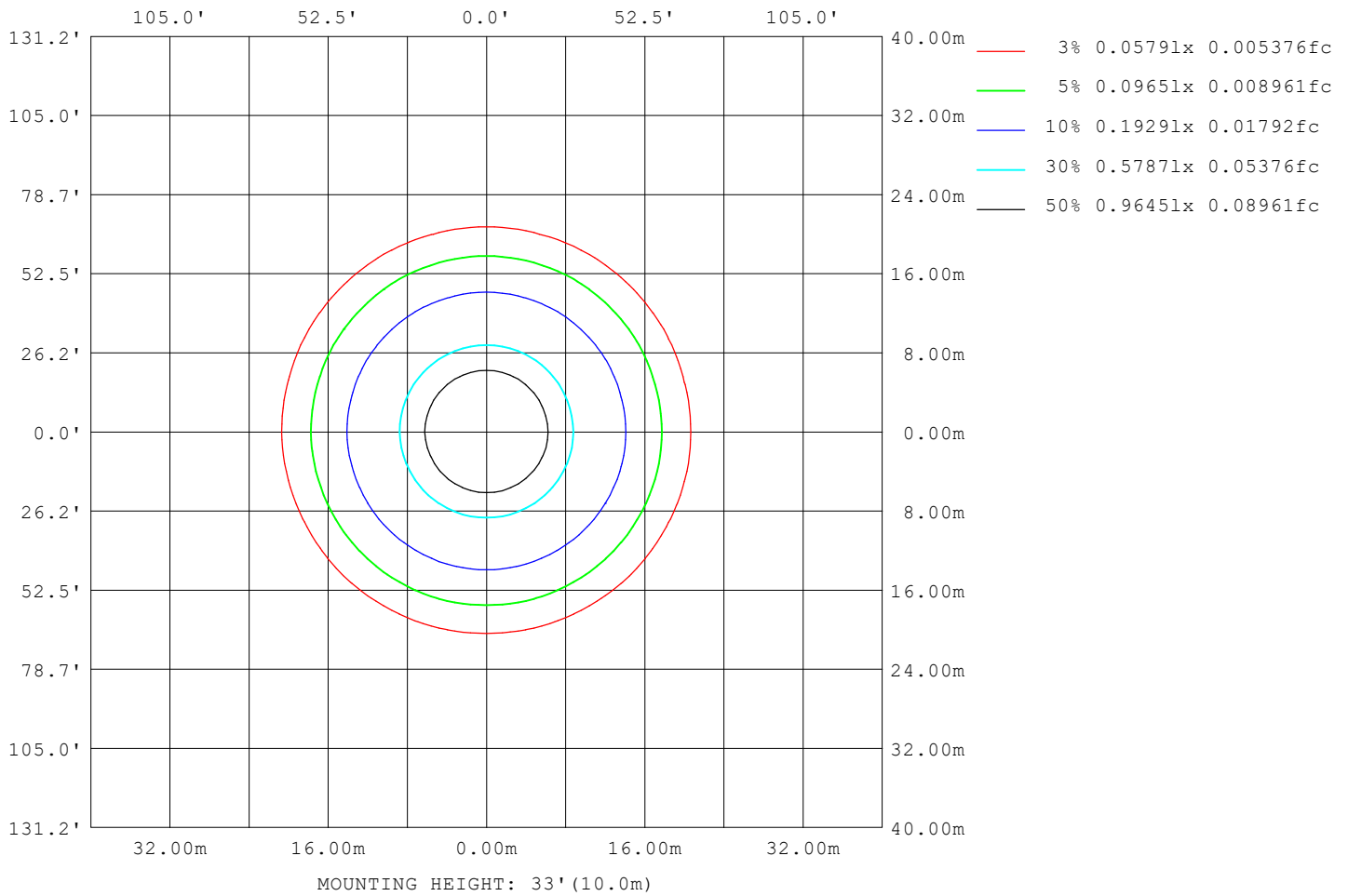
Note: The Curves indicate the illuminated area and the average illumination when the luminaire is at different distance.

C Range: 0 - 360DEG
 C Interval: 15.0DEG
 Test Speed: HIGH
 Temperature: 25.3°C
 Operators: DAMIN
 Test Date: 2024-01-24

γ Range: 0 - 90DEG
 γ Interval: 5.0DEG
 Test System: EVERFINE GO-2000B_V1 SYSTEM V2.00.473
 Humidity: 65.0%
 Test Distance: 9.401m [K=1.0000]
 Remarks:

ISOLUX DIAGRAM

Test:U:220.45V I:0.0495A P:6.4171W PF:0.5884 Freq:50.00Hz Lamp Flux:535.333x1 lm		
NAME:	TYPE:	WEIGHT:
SPEC.:	DIM.:	SERIAL No.:
MFR.: EVERFINE	SUR.:	Shielding Angle:



C Range: 0 - 360DEG
C Interval: 15.0DEG
Test Speed: HIGH
Temperature:25.3°C
Operators:DAMIN
Test Date:2024-01-24

γ Range: 0 - 90DEG
γ Interval: 5.0DEG
Test System:EVERFINE GO-2000B_V1 SYSTEM V2.00.473
Humidity:65.0%
Test Distance:9.401m [K=1.0000]
Remarks:

LED Avg.L Report

Test:U:220.45V I:0.0495A P:6.4171W PF:0.5884 Freq:50.00Hz Lamp Flux:535.333x1 lm		
NAME:	TYPE:	WEIGHT:
SPEC.:	DIM.:	SERIAL No.:
MFR.: EVERFINE	SUR.:	Shielding Angle:

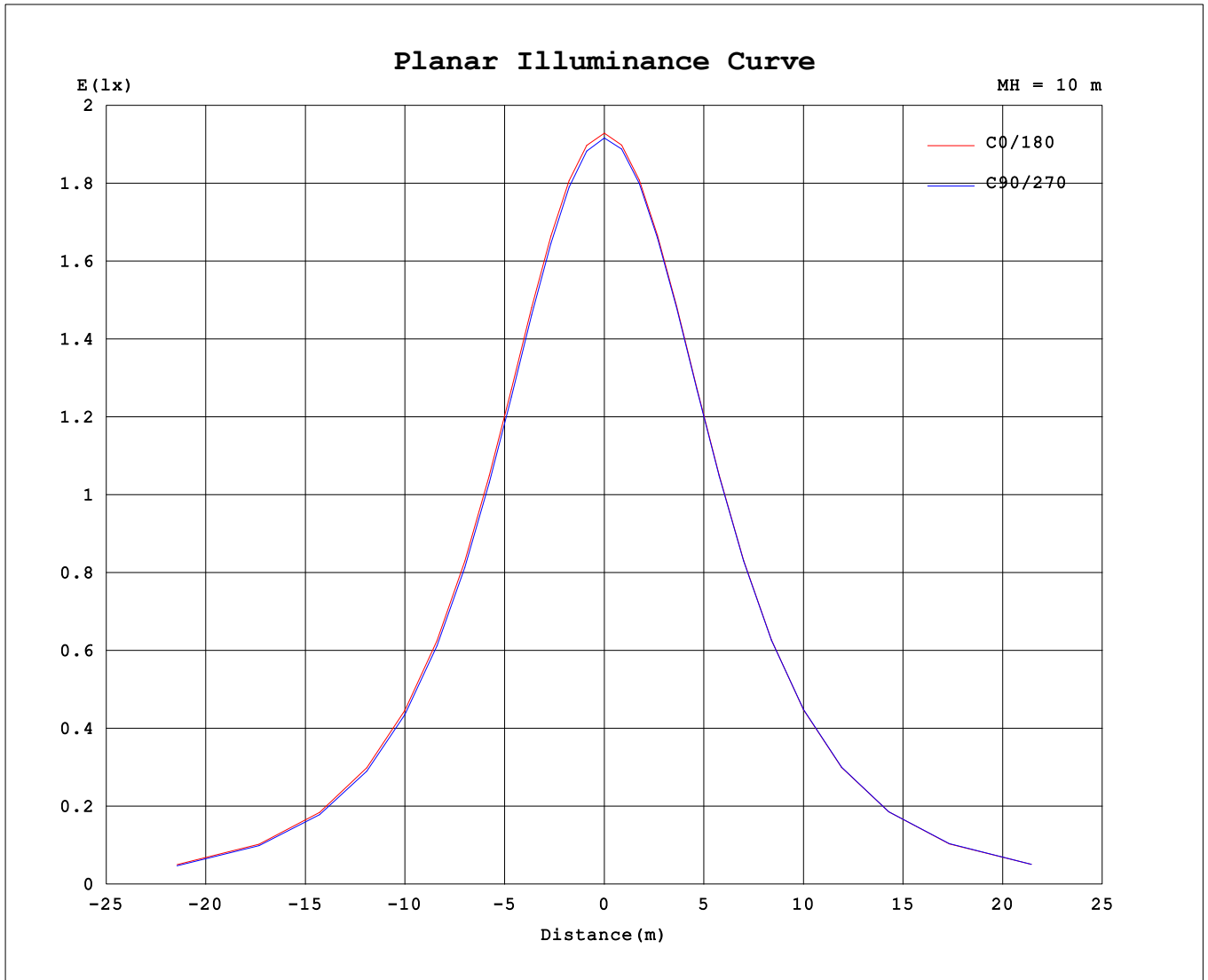
AvgL	cd/m2
L_0~180 (65) av	1587
L_0~180 (75) av	1371
L_0~180 (85) av	762
L_90~270 (65) av	1562
L_90~270 (75) av	1246
L_90~270 (85) av	285
L_45 (65) av	1580
L_45 (75) av	1325
L_45 (85) av	516

Standard: GB/T 29293-2012

C Range: 0 - 360DEG
 C Interval: 15.0DEG
 Test Speed: HIGH
 Temperature:25.3°C
 Operators:DAMIN
 Test Date:2024-01-24

γ Range: 0 - 90DEG
 γ Interval: 5.0DEG
 Test System:EVERFINE GO-2000B_V1 SYSTEM V2.00.473
 Humidity:65.0%
 Test Distance:9.401m [K=1.0000]
 Remarks:

Planar Illuminance Curve



C Range: 0 - 360DEG
 C Interval: 15.0DEG
 Test Speed: HIGH
 Temperature: 25.3°C
 Operators: DAMIN
 Test Date: 2024-01-24

γ Range: 0 - 90DEG
 γ Interval: 5.0DEG
 Test System: EVERFINE GO-2000B_V1 SYSTEM V2.00.473
 Humidity: 65.0%
 Test Distance: 9.401m [K=1.0000]
 Remarks:

LUMINOUS DISTRIBUTION INTENSITY DATA

Test:U:220.45V I:0.0495A P:6.4171W PF:0.5884 Freq:50.00Hz Lamp Flux:535.333x1 lm		
NAME:	TYPE:	WEIGHT:
SPEC.:	DIM.:	SERIAL No.:
MFR.: EVERFINE	SUR.:	Shielding Angle:

Table--1

UNIT: cd

C (DEG) \ γ (DEG)	0	15	30	45	60	75	90	105	120	135	150	165	180	195	210	225	240	255	270
0	192	192	192	192	192	192	192	192	192	192	192	192	192	192	192	192	192	192	192
5	191	191	191	191	191	191	191	191	191	191	191	191	191	191	191	191	191	191	191
10	188	188	188	188	188	188	188	188	188	188	188	188	188	188	188	188	189	188	189
15	184	184	183	183	183	183	183	183	183	183	183	184	184	184	184	184	184	184	184
20	177	177	177	177	176	176	176	177	177	177	177	177	178	178	178	178	178	178	178
25	170	170	169	169	168	169	168	169	169	169	169	170	170	170	170	170	171	170	171
30	161	160	160	160	159	159	159	159	159	160	160	161	161	161	161	161	162	161	162
35	150	150	149	149	148	148	148	149	149	149	149	150	150	150	151	151	151	151	151
40	138	138	137	137	137	137	136	137	137	137	138	138	139	139	139	139	140	139	140
45	126	126	125	124	124	124	123	124	124	125	125	126	126	126	127	127	127	127	127
50	112	112	111	111	110	110	110	110	110	111	111	112	113	113	113	113	113	113	113
55	97.5	97.3	96.4	96.2	95.5	95.5	95.2	95.7	95.7	96.5	96.8	97.6	98.1	98.1	98.7	98.5	98.9	98.7	99.1
60	82.4	82.2	81.3	81.1	80.3	80.3	79.9	80.5	80.6	81.4	81.6	82.5	83.0	82.9	83.6	83.4	83.9	83.6	84.0
65	66.7	66.6	65.7	65.4	64.4	64.2	63.7	64.4	64.7	65.8	66.0	66.9	67.4	67.4	68.0	67.9	68.3	68.0	68.4
70	51.0	50.9	50.0	49.3	47.7	47.4	46.7	47.5	47.9	49.6	50.3	51.2	51.7	51.7	52.4	51.9	51.9	51.2	51.4
75	34.6	34.6	33.7	33.0	31.3	30.7	30.1	30.7	31.4	33.1	34.4	35.9	36.4	36.5	36.5	35.6	35.2	34.3	34.4
80	19.1	18.6	17.1	17.4	15.8	15.2	14.5	15.1	15.7	17.5	18.9	20.5	21.1	20.8	20.7	19.8	19.2	18.3	18.4
85	6.25	5.23	3.93	3.76	2.17	1.33	0.92	1.39	2.07	3.67	4.75	5.67	7.02	6.01	5.21	5.36	4.70	4.10	4.04
90	0.29	0.29	0.29	0.29	0.29	0.28	0.28	0.28	0.29	0.28	0.28	0.28	0.36	0.39	0.38	0.36	0.34	0.37	0.36

C Range: 0 - 360DEG	γ Range: 0 - 90DEG
C Interval: 15.0DEG	γ Interval: 5.0DEG
Test Speed: HIGH	Test System:EVERFINE GO-2000B_V1 SYSTEM V2.00.473
Temperature:25.3°C	Humidity:65.0%
Operators:DAMIN	Test Distance:9.401m [K=1.0000]
Test Date:2024-01-24	Remarks:

LUMINOUS DISTRIBUTION INTENSITY DATA

Test:U:220.45V I:0.0495A P:6.4171W PF:0.5884 Freq:50.00Hz Lamp Flux:535.333x1 lm		
NAME:	TYPE:	WEIGHT:
SPEC.:	DIM.:	SERIAL No.:
MFR.: EVERFINE	SUR.:	Shielding Angle:

Table--2

UNIT: cd

C (DEG) \ γ (DEG)	285	300	315	330	345														
0	192	192	192	192	192														
5	191	191	191	191	191														
10	189	189	188	188	188														
15	184	184	184	184	184														
20	178	178	178	178	178														
25	171	171	170	170	170														
30	161	162	161	161	161														
35	151	151	151	151	151														
40	139	140	139	139	139														
45	127	127	127	127	126														
50	113	113	113	113	113														
55	98.8	99.1	98.6	98.7	98.0														
60	83.7	84.0	83.5	83.5	82.8														
65	68.0	68.3	67.9	67.9	67.3														
70	51.2	51.9	51.8	52.3	51.6														
75	34.3	35.1	35.5	36.2	35.6														
80	18.3	19.1	19.7	20.1	19.3														
85	4.04	4.58	5.21	5.79	5.65														
90	0.37	0.35	0.36	0.35	0.41														

C Range: 0 - 360DEG
 C Interval: 15.0DEG
 Test Speed: HIGH
 Temperature:25.3°C
 Operators:DAMIN
 Test Date:2024-01-24

γ Range: 0 - 90DEG
 γ Interval: 5.0DEG
 Test System:EVERFINE GO-2000B_V1 SYSTEM V2.00.473
 Humidity:65.0%
 Test Distance:9.401m [K=1.0000]
 Remarks: