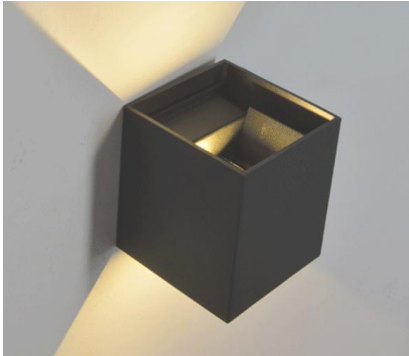


PRODUCT DATASHEET

IP65+Aluminum+High luminous efficiency - Wall Light
HYD-W12-2*5W 3000K



Application

- Villa
- Courtyard
- Doorway
- Balcony
- Corridor

Benefits

- Flicker free
- Lighting coverage area is wide
- Protection against water & dust, IP65
- Low power, high light efficiency, energy saving and environmental protection

Features

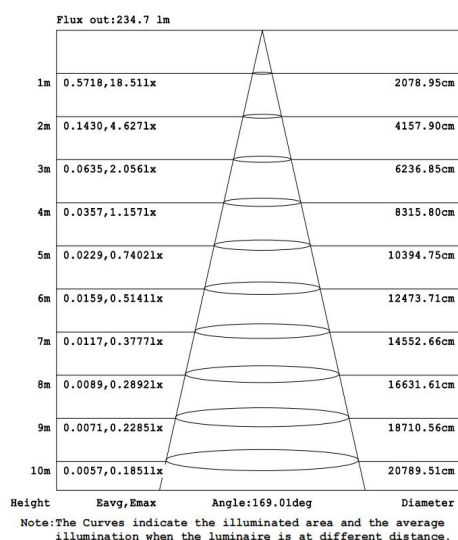
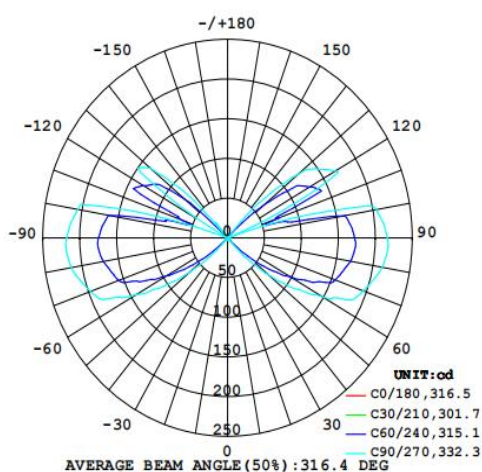
- Warranty 3 years
- Glass, Good light transmission
- High light transmission mask to ensure uniform light, reduce the dark area of the lighting environment

Electrical Data

Nominal wattage (W)	2*5 W
Nominal Voltage (V)	220-240 V
Mains Frequency (Hz)	50/60 Hz
Nominal Current (mA)	78
LED Driver Current (mA)	250
LED Driver Voltage (VDC)	28-42
LED Driver Efficiency (%)	83%
Power Factor λ	0.55
Total harmonic distortion (%)	...
Operating mode	Built in LED driver

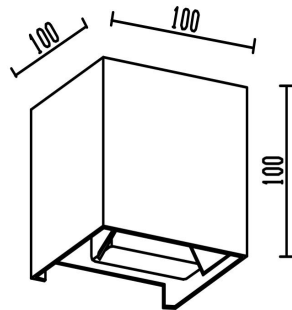
Photometrical data

Luminous flux $\pm 10\%$ (lm)	570
Luminous efficacy	57
Color temperature	3000 K
Light color (designation)	Warm White
Color rendering index Ra	≥ 80
Standard deviation of color matching	≤ 5 SDCM
Luminous intensity/cd	231
Flickering	Flicker free
Beam angle	316 °



Dimensions & Weight

Diameter (mm)	100
Height (mm)	100
Product weight (g)	...



Material & Colors

Product color	Grey
Housing color	Grey
Body material	Aluminum
Cover material	Glass
Mercury content	0.0 mg

Application & Mounting

Ambient temperature range	-10°C~+45 °C
Temperature range at storage	-10°C~+45 °C
Type of connection	Screw terminal
Type of protection	IP65
Dimmable	No
Mounting type	Surface mounted
Mounting location	Wall
Application environment	Indoor/Outdoor
Cut size (mm)	No
LED module replaceable	Not replaceable
With light source	Yes

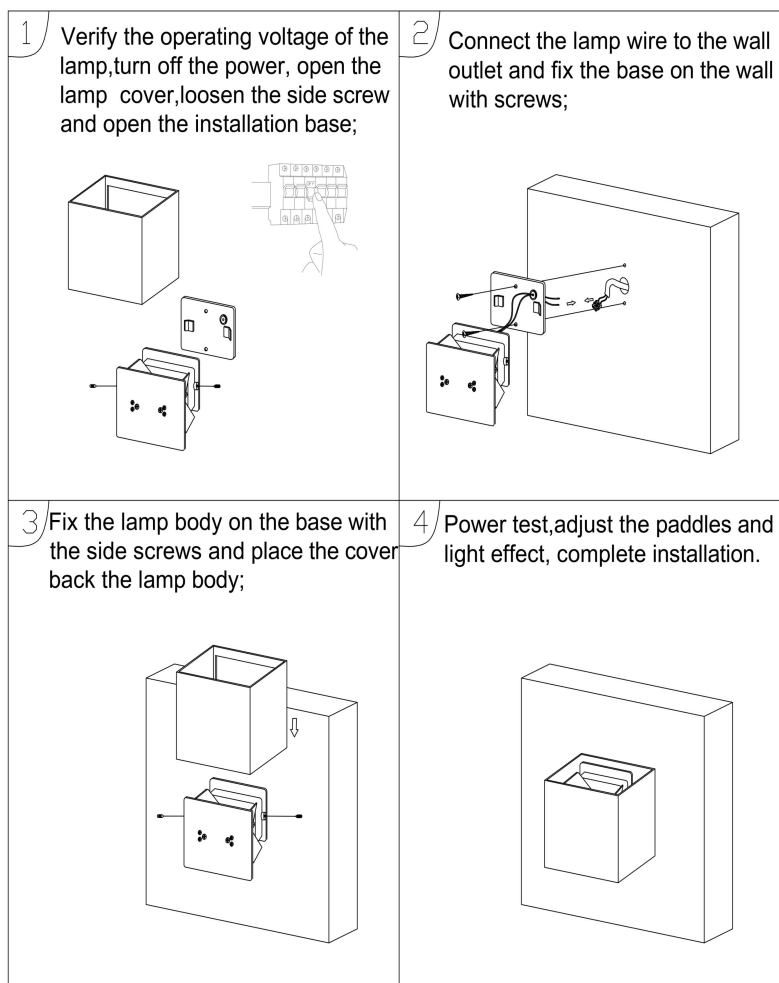
Certificates & Lifespan

Life (h)	30,000
Certificates	CB CE LVD EMC
Standards	ISO9001:2015

Logistical Data

Product code	Dimensions (L*W*H)	Pcs/ carton	G.W. kg	Volume CBM
HYD-W12-2*5W	57*24*24 cm	20	...	0.03283

Installation Method



Disclaimer

Subject to change without notice. Errors and omission excepted. Always make sure to use the most recent release