

PRODUCT DATASHEET

Minimum Glare Recessed mounted Downlight
HYD-219C-7W-3000K /4000K / 6000K



Application

- Hotel
- Mall
- Airport
- Lobby
- Theater

Benefits

- Minimum Glare, more clear and comfortable
- Flicker free.
- Low lumen depreciation.
- Special material of reflectors (4 different colors to choice)



Features

- Warranty 5 years
- Yellowing-resistant diffuser (PC)
- Buckle design, easy and quick installation
- Die-cast aluminum body for better heat dissipation, anti-corrosion, and easy maintain

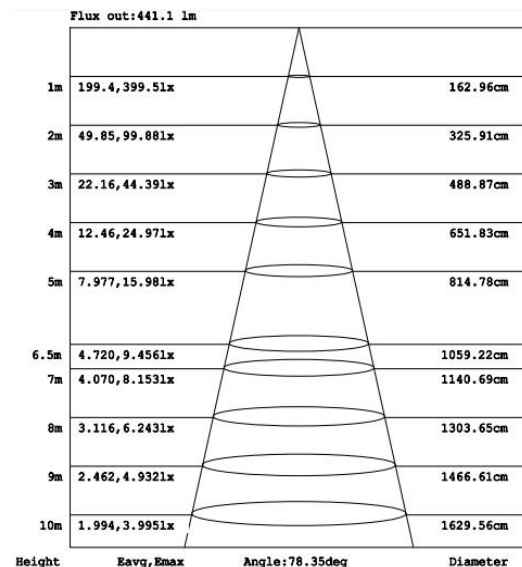
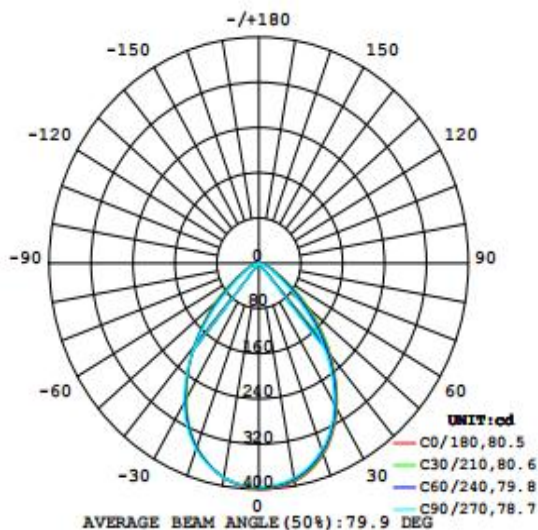
Electrical Data

Nominal wattage (W)	7W
Nominal Voltage (V)	220-240V
Mains Frequency (Hz)	50/60Hz
Nominal Current (mA)	0.1A Max
LED Driver Current (mA)	300mA
LED Driver Voltage (V)	15-24Vdc
LED Driver Efficiency (%)	80%
Power factor λ	0.5
Total harmonic distortion (%)	...
Operating mode	External LED driver

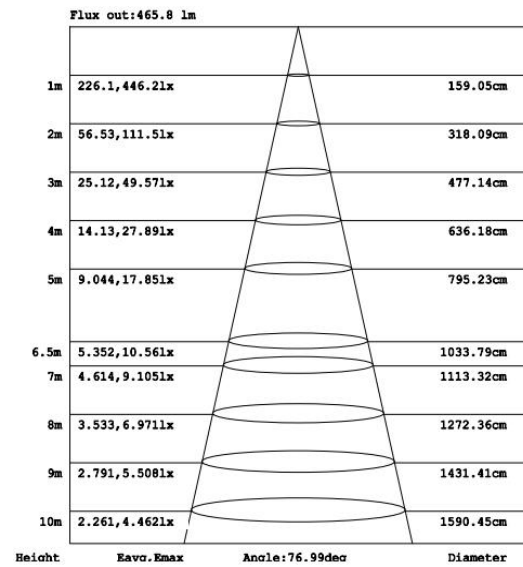
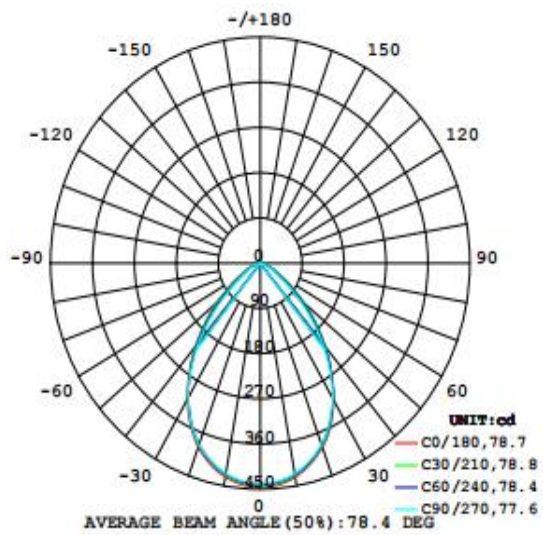
Photometrical data

Luminous flux $\pm 10\%$ (lm)	659 lm	715 lm	732 lm
Luminous efficacy	85 lm/w	91 lm/w	92 lm/w
Color temperature	3000K	4000K	6000K
Light color (designation)	Warm White	Nature White	Cold White
Color rendering index Ra	≥ 80		
Standard deviation of color matching	≤ 5 SDCM		
Luminous intensity/cd	400	446	444
Flickering	Flicker free		
Beam angle	80 °	78 °	80 °

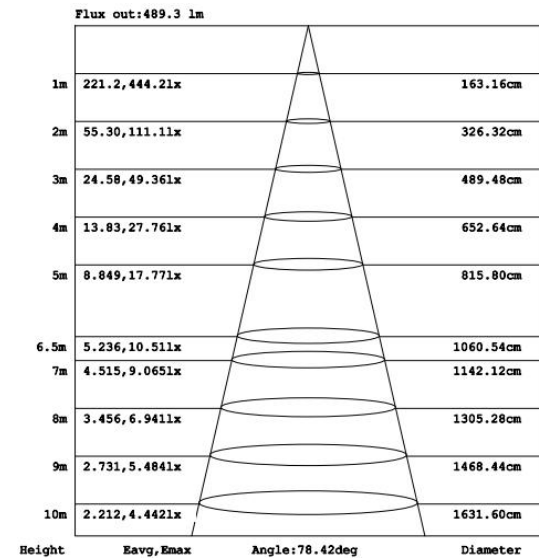
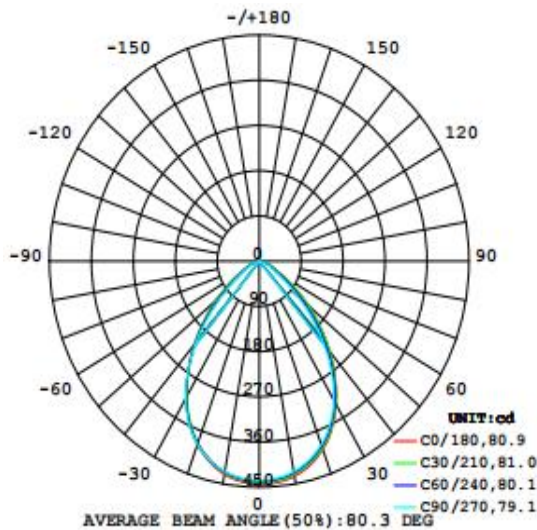
3000K



4000K

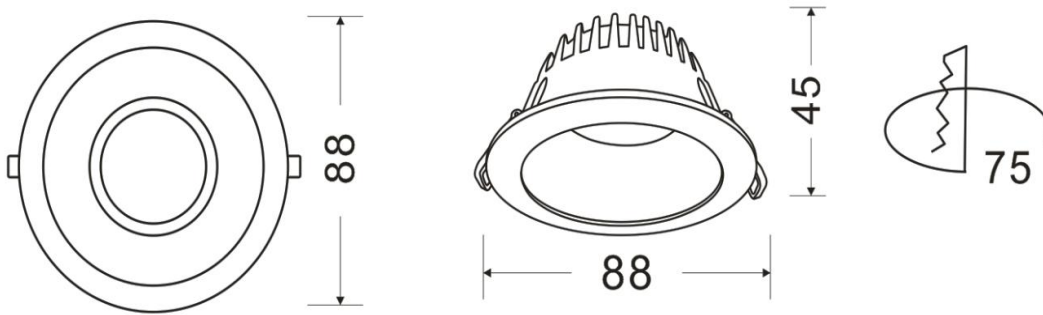


6000K



Dimensions & Weight

Diameter (mm)	88
Height (mm)	45
Product weight (g)	198



Material & Colors

Product color	Black heat sink / White frame
Housing color	Black
Body material	Aluminum
LGP material	PC
Reflector color	White
Mercury content	0.0 mg

Application & Mounting

Ambient temperature range	-10-45 °C
Temperature range at storage	-25-60 °C
Type of connection	Screwless terminal
Type of protection	IP20 / IP44
Dimmable	No
Mounting type	Recesse mounted
Mounting location	Ceiling
Application environment	Indoor
Cut size (mm)	75
LED module replaceable	Not replaceable
With light source	Yes

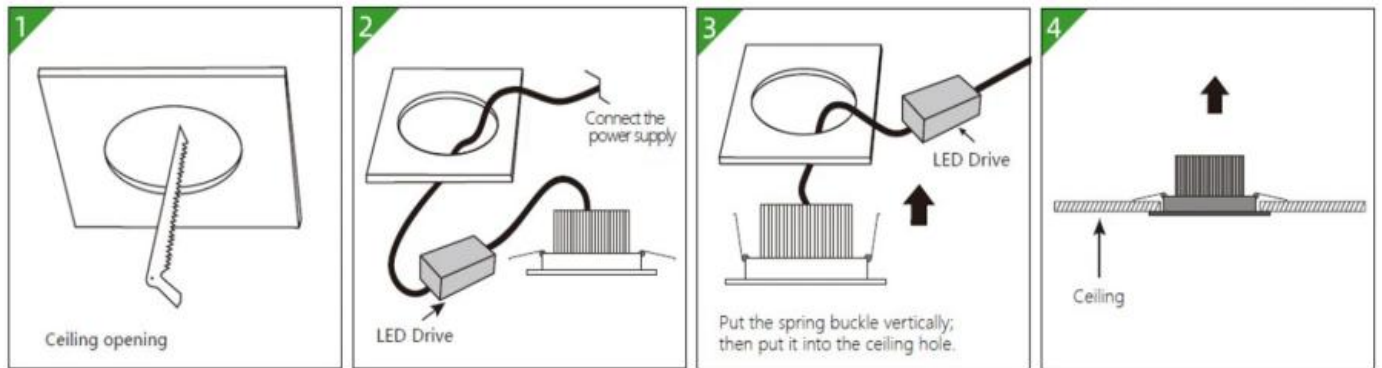
Certificates & Lifespan

Life (h)	50000
Number of switching cycles	25000
Certificates	CB CE LVD EMC
Standards	ISO9001:2015

Logistical Data

Product code	Dimensions (L*W*H)	Pcs/ carton	G.W. kg	Volume CBM
HYD-219C-7W	57*24*37.5 cm	50	...	0.0513

Installation Method



Disclaimer

Subject to change without notice. Errors and omission excepted. Always make sure to use the most recent release